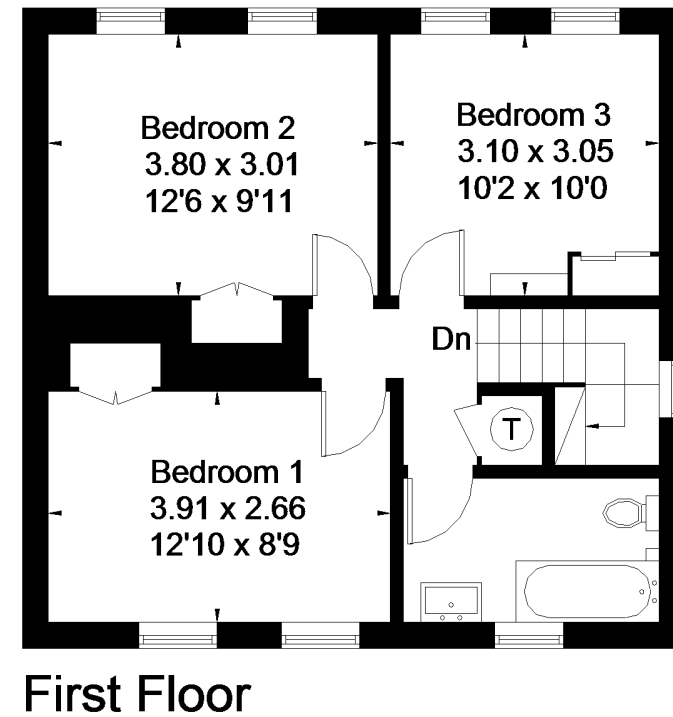
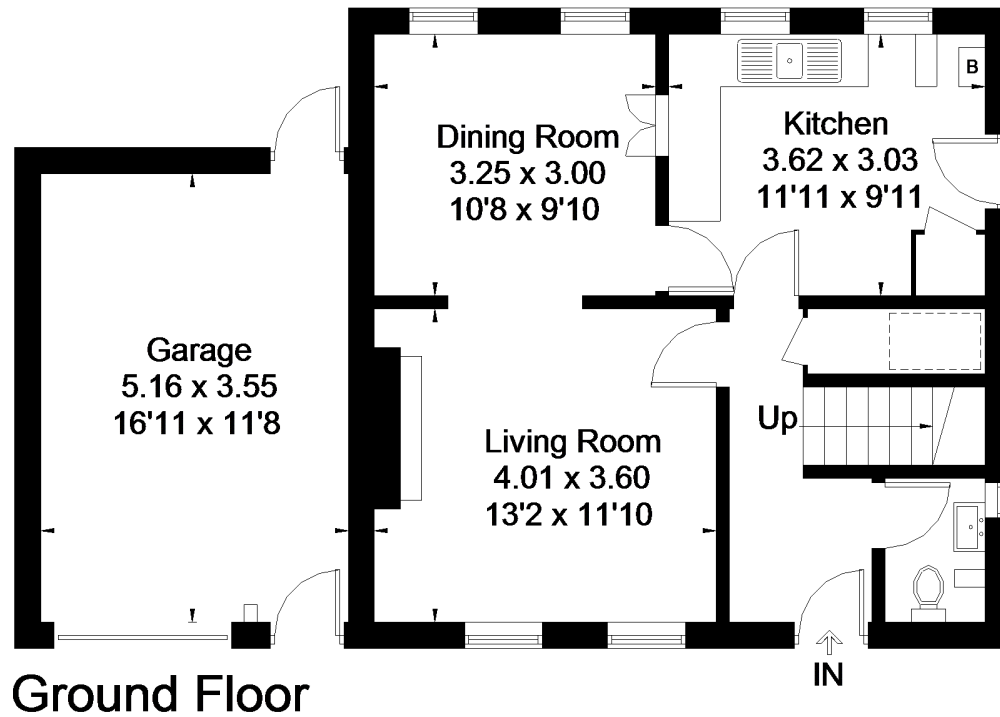


# River Park, Marlborough

Approximate Gross Internal Area = 95.2 sq m / 1025 sq ft  
Garage = 18.3 sq m / 197 sq ft  
Total = 113.5 sq m / 1222 sq ft



FLOORPLAZ © 2018 0203 9056099 Ref: 217657

This plan is for layout guidance only. Drawn in accordance with RICS guidelines. Not drawn to scale unless stated. Windows & door openings are approximate. Whilst every care is taken in the preparation of this plan, please check all dimensions, shapes & compass bearings before making any decisions reliant upon them.