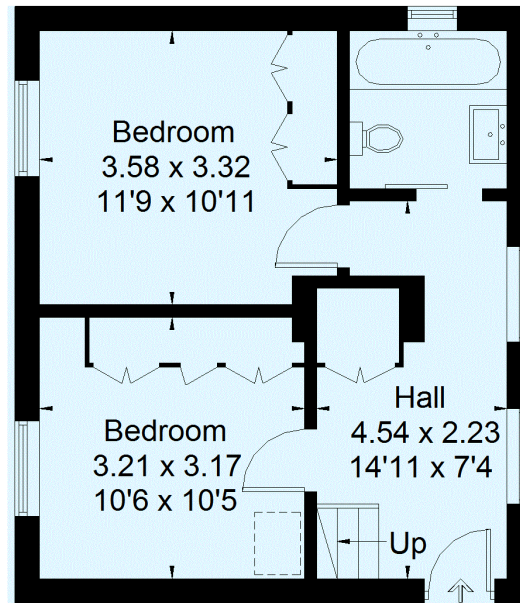
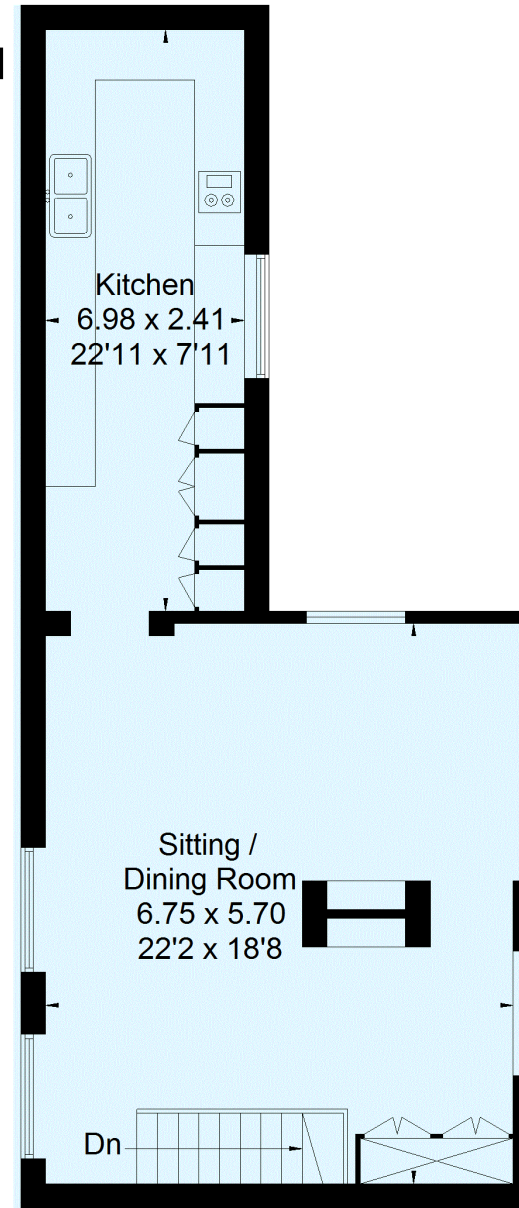


Ray Lodge, Ray Park Avenue, Maidenhead

Approximate Gross Internal Area
93.5 sq m / 1006 sq ft



Ground Floor



First Floor

Floorplan © 2017
0203 9056099 Ref: 195861
This plan is for layout guidance only.
Drawn in accordance with
RICS guidelines. Not drawn to
scale, unless stated. Windows &
door openings are approximate.
Whilst every care is taken in the
preparation of this plan, please check
all dimensions, shapes & compass
bearings before making any
decisions reliant upon them.