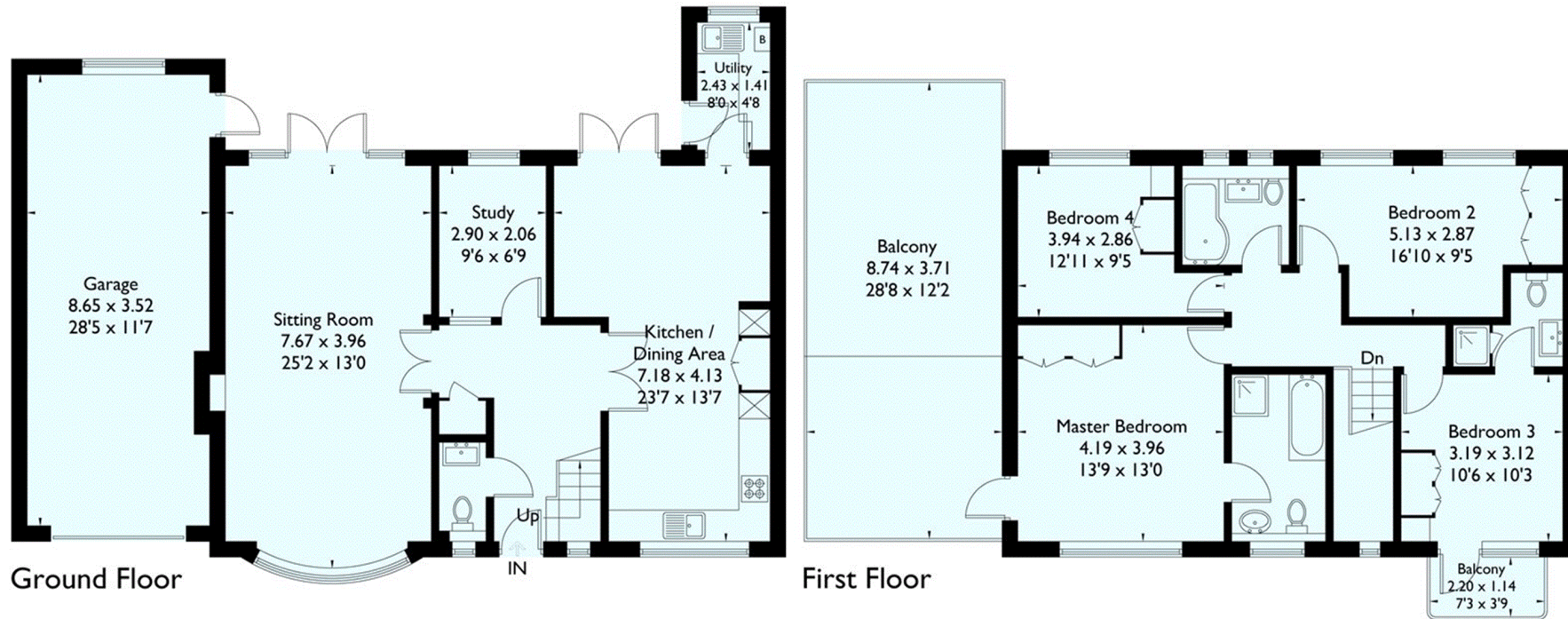


Lower Cookham Road, Maidenhead,

Approximate Gross Internal Area = 155.8 sq m / 1677 sq ft
Garage = 30.2 sq m / 325 sq ft
Total = 186.0 sq m / 2002 sq ft



FLOORPLANZ © 2017 0203 9056099 Ref: 187958

This plan is for layout guidance only. Drawn in accordance with RICS guidelines. Not drawn to scale unless stated. Windows & door openings are approximate. Whilst every care is taken in the preparation of this plan, please check all dimensions, shapes & compass bearings before making any decisions reliant upon them.