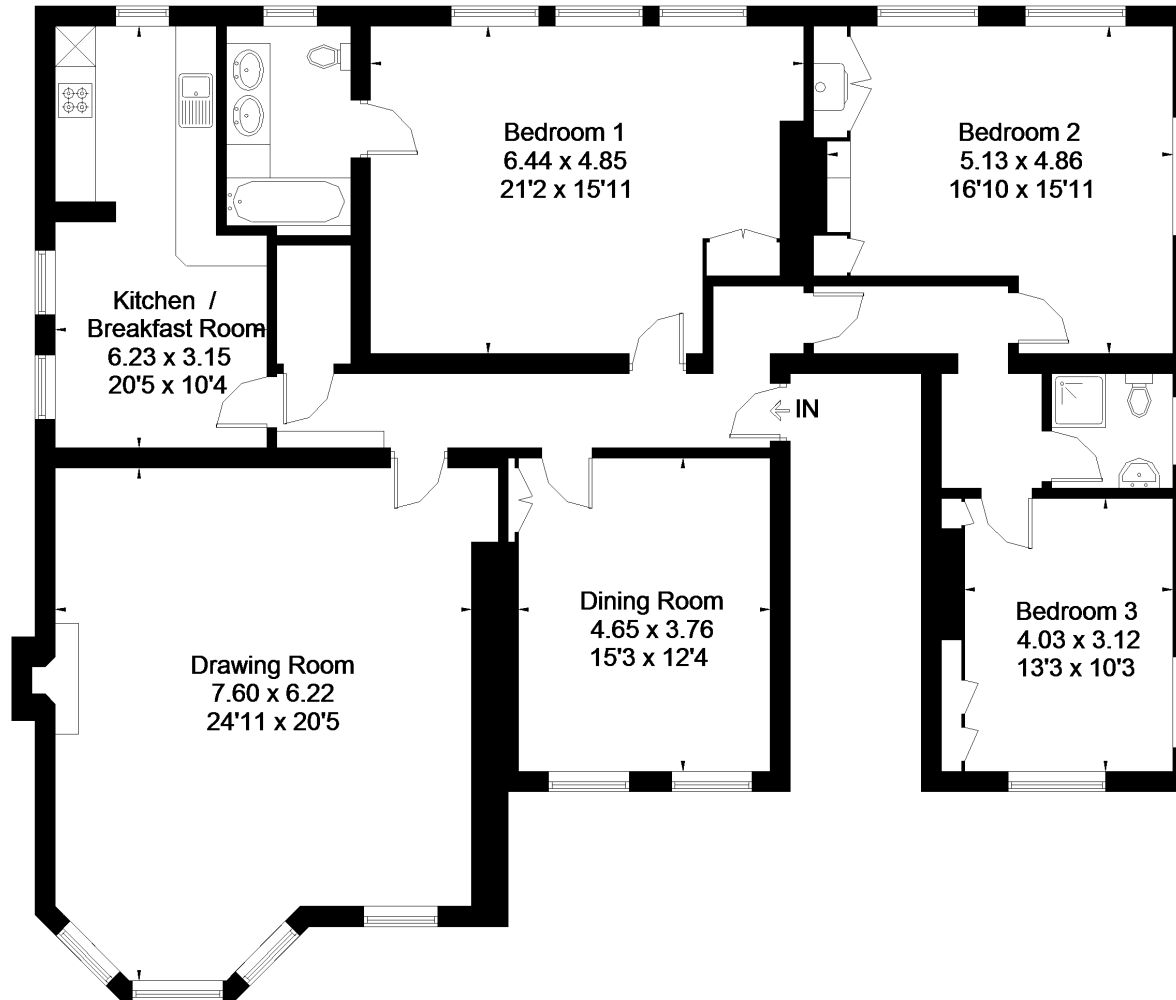


Lisswood, London Road, Hill Brow, Liss

Approximate Gross Internal Area
183.7 sq m / 1977 sq ft



FLOORPLANZ © 2018 0203 9056099 Ref: 210524

This plan is for layout guidance only. Drawn in accordance with RICS guidelines. Not drawn to scale unless stated. Windows & door openings are approximate. Whilst every care is taken in the preparation of this plan, please check all dimensions, shapes & compass bearings before making any decisions reliant upon them.