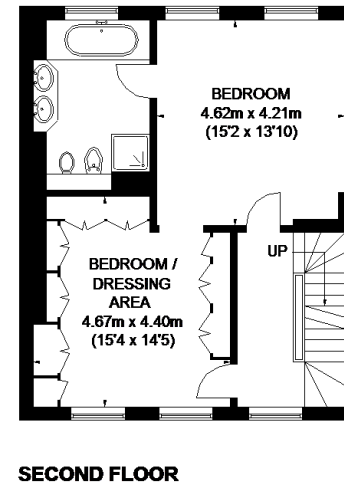
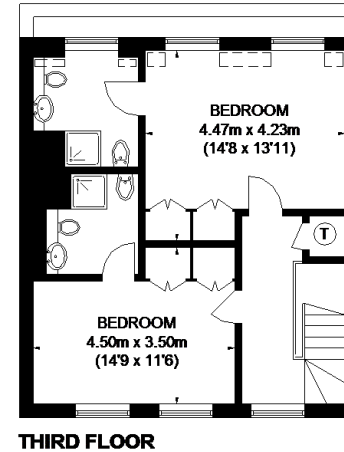
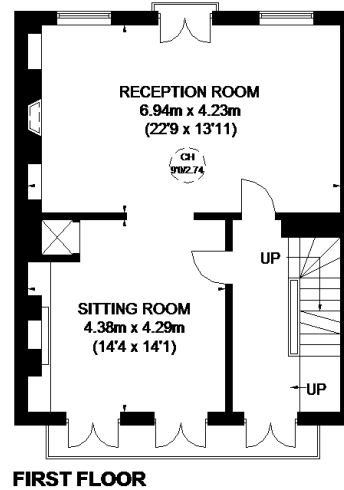
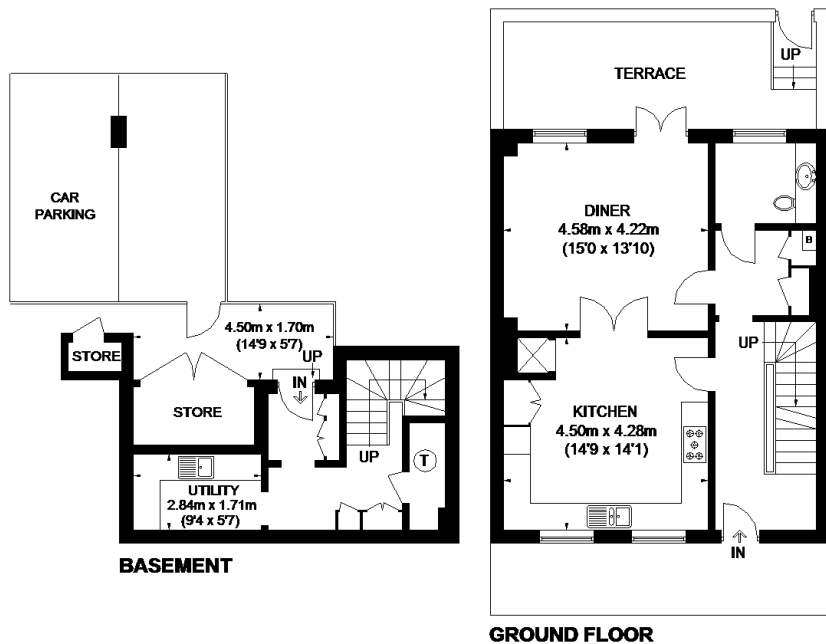


WILTON STREET



**APPROXIMATE GROSS INTERNAL AREA
(EXCLUDING REDUCED HEADROOM / STORES)**

BASEMENT = 203 SQ. FT. (18.9 SQ. M.)
 GROUND FLOOR = 650 SQ. FT. (60.4 SQ. M.)
 FIRST FLOOR = 652 SQ. FT. (60.6 SQ. M.)
 SECOND FLOOR = 647 SQ. FT. (60.1 SQ. M.)
 THIRD FLOOR = 578 SQ. FT. (53.7 SQ. M.)
 STORE = 46 SQ. FT. (4.3 SQ. M.)
 REDUCED HEADROOM = 15 SQ. FT. (1.4 SQ. M.)
TOTAL = 2791 SQ. FT. (259.4 SQ. M.)

= CEILING HEIGHT

= REDUCED HEADROOM BELOW 1.5M / 5'0"

This plan is for layout guidance only. Not drawn to scale unless stated. Windows and door openings are approximate. Whilst every care is taken in the preparation of this plan, please check all dimensions, shapes and compass bearings before making any decisions reliant upon them. Please be advised that Hamptons International / our agents have not seen or reviewed any building regulations or planning permission in relation to works carried out to the property (ID433575)