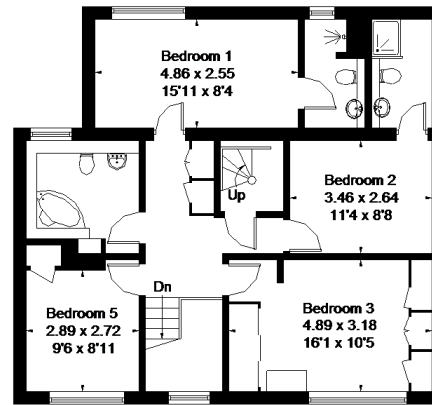
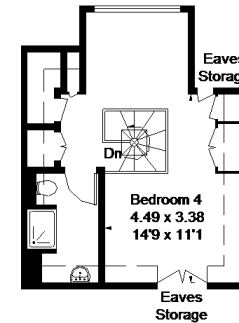


**Ground Floor**  
 Area = 78.2 sq m / 842 sq ft (Excluding Garage)  
 (Limited Use Area = 1.7 sq m / 18 sq ft)

= Reduce head height below 1.5m



**First Floor**  
 Area = 82.9 sq m / 892 sq ft  
 (Limited Use Area = 1.4 sq m / 15 sq ft)



**Second Floor**  
 Area = 29.3 sq m / 315 sq ft  
 (Limited Use Area = 5.1 sq m / 55 sq ft)

Approximate Area =  
 190.4 sq m / 2049 sq ft (Including Void)  
 Garage = 14.8 sq m / 159 sq ft  
 Total = 205.2 sq m / 2208 sq ft  
 Including Limited Use Area  
 (8.2 sq m / 88 sq ft)

Surveyed and drawn in accordance with the  
 International Property Measurement Standards  
 (IPMS 2: Residential)  
 fourwalls-group.com 232282