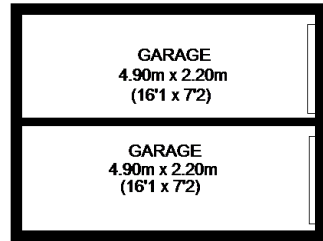
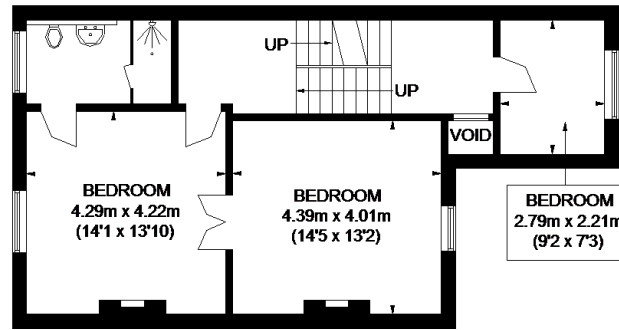


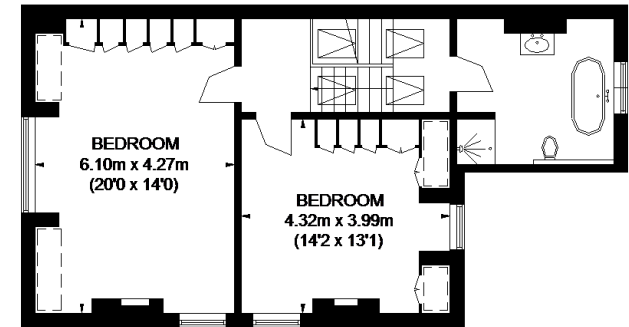
CRESCENT ROAD



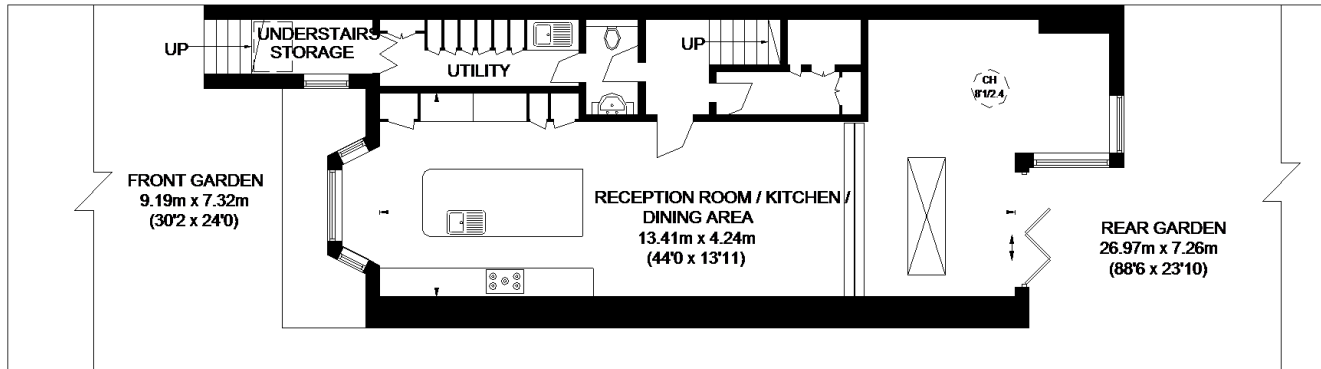
GROUND FLOOR
(Not shown in actual location / orientation)



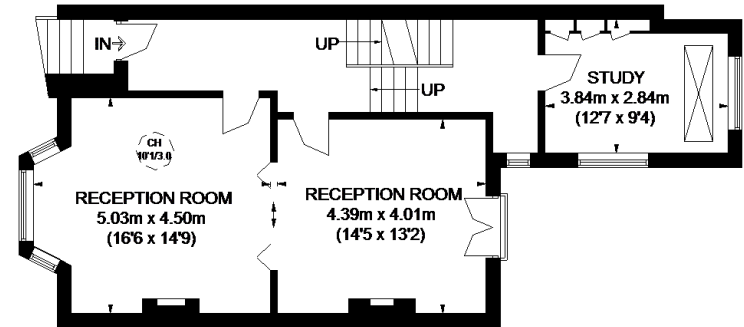
FIRST FLOOR



SECOND FLOOR

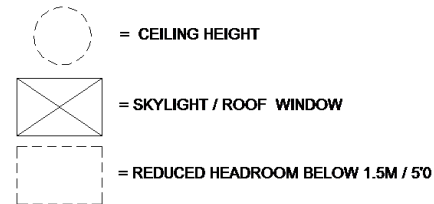
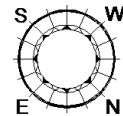


LOWER GROUND FLOOR



UPPER GROUND FLOOR

- APPROXIMATE GROSS INTERNAL AREA
(EXCLUDING REDUCED HEADROOM / VOID)**
- LOWER GROUND FLOOR = 942 SQ. FT. (87.5 SQ. M.)
 - UPPER GROUND FLOOR = 728 SQ. FT. (67.6 SQ. M.)
 - FIRST FLOOR = 672 SQ. FT. (62.4 SQ. M.)
 - SECOND FLOOR = 659 SQ. FT. (61.2 SQ. M.)
 - REDUCED HEADROOM = 43 SQ. FT. (4.0 SQ. M.)
 - GARAGE = 237 SQ. FT. (22.0 SQ. M.)
 - TOTAL = 3281 SQ. FT. (304.7 SQ. M.)



This plan is for layout guidance only. Not drawn to scale unless stated. Windows and door openings are approximate. Whilst every care is taken in the preparation of this plan, please check all dimensions, shapes and compass bearings before making any decisions reliant upon them. Please be advised that Countrywide / our agents have not seen or reviewed any building regulations or planning permission in relation to works carried out to the property (ID508914)