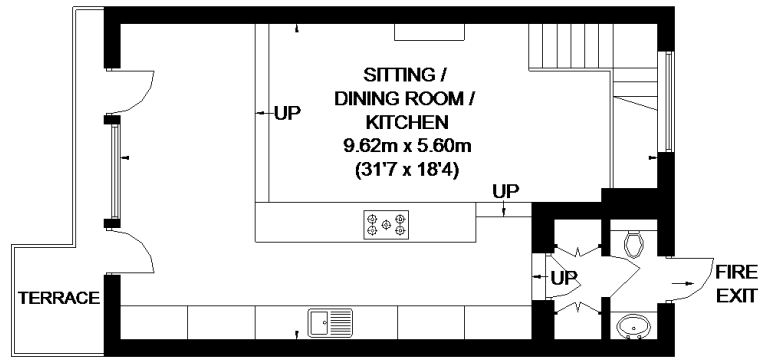
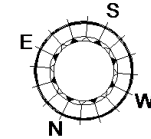
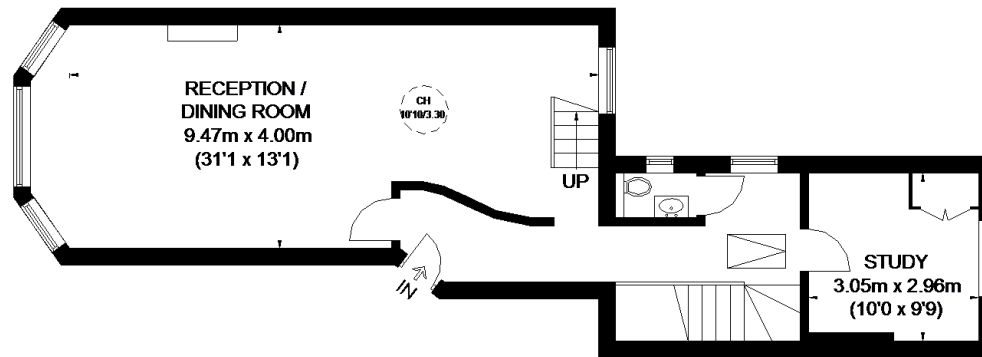


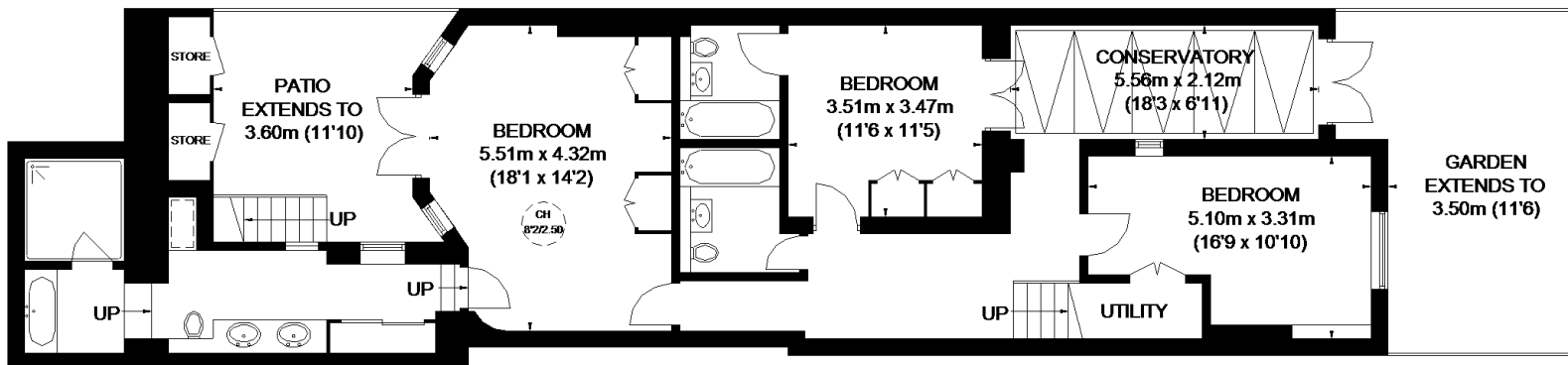
# PALACE GARDENS TERRACE



**FIRST FLOOR**



**RAISED GROUND FLOOR**



**LOWER GROUND FLOOR**

APPROXIMATE GROSS INTERNAL AREA  
(EXCLUDING REDUCED HEADROOM)

- LOWER GROUND FLOOR  
1164 SQ. FT. (108.1 SQ. M.)
- RAISED GROUND FLOOR  
667 SQ. FT. (62.0 SQ. M.)
- FIRST FLOOR = 588 SQ. FT. (54.6 SQ. M.)
- REDUCED HEADROOM  
5 SQ. FT. (0.5 SQ. M.)
- STORES = 24 SQ. FT. (2.2 SQ. M.)
- TOTAL = 2448 SQ. FT. (227.4 SQ. M.)

- = CEILING HEIGHT
- = SKYLIGHT / ROOF WINDOW
- = REDUCED HEADROOM BELOW 1.5M / 5'0"

This plan is for layout guidance only. Not drawn to scale unless stated. Windows and door openings are approximate. Whilst every care is taken in the preparation of this plan, please check all dimensions, shapes and compass bearings before making any decisions reliant upon them. Please be advised that Countrywide / our agents have not seen or reviewed any building regulations or planning permission in relation to works carried out to the property (ID554654)