

RIPPLEVALE GROVE

Approximate Gross Internal Area (Excluding Reduced Headroom)

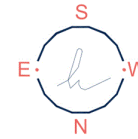
Lower Ground floor = 680 sq. ft. (63.2 sq. m.)

Ground floor = 729 sq. ft. (67.7 sq. m.)

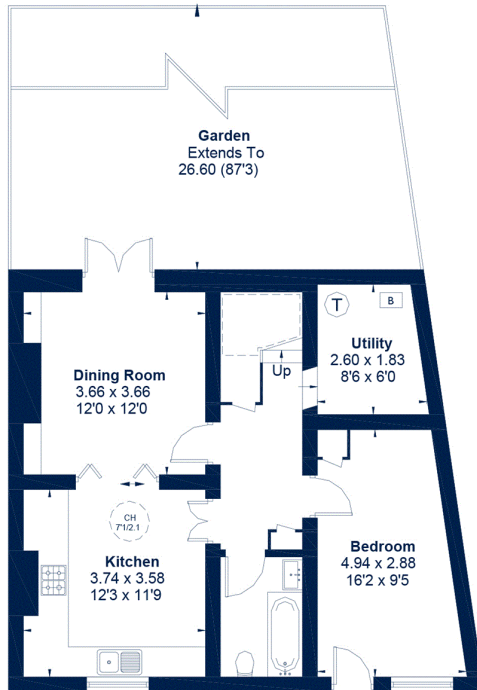
First floor = 704 sq. ft. (65.4 sq. m.)

Reduced headroom = 20 sq. ft. (1.9 sq. m.)

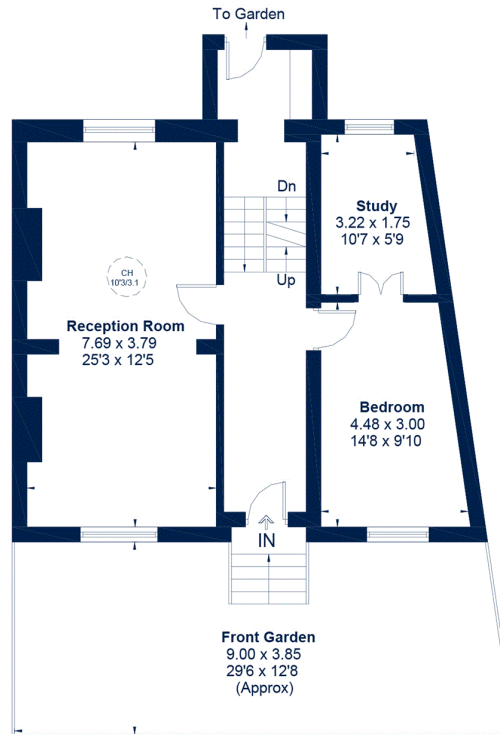
Total = 2133 sq. ft. (198.2 sq. m.)



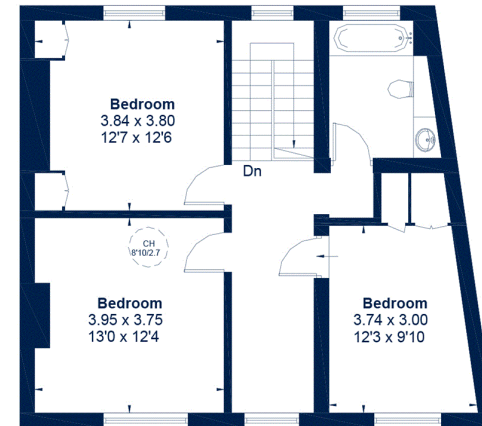
= Reduced head height below 1.5m



Lower Ground Floor



Raised Ground Floor



First Floor

This plan is for layout guidance only. Not drawn to scale unless stated. Windows and door openings are approximate. Whilst every care is taken in the preparation of this plan, please check all dimensions, shapes and compass bearings before making any decisions reliant upon them.
ID 749762