

ST. MARY'S GROVE

Approximate Gross Internal Area

(excluding reduced headroom / eaves)

Lower Ground floor = 878 sq. ft. (81.6 sq. m.)

Raised Ground floor = 851 sq. ft. (79.1 sq. m.)

First floor = 828 sq. ft. (76.9 sq. m.)

Second floor = 660 sq. ft. (61.3 sq. m.)

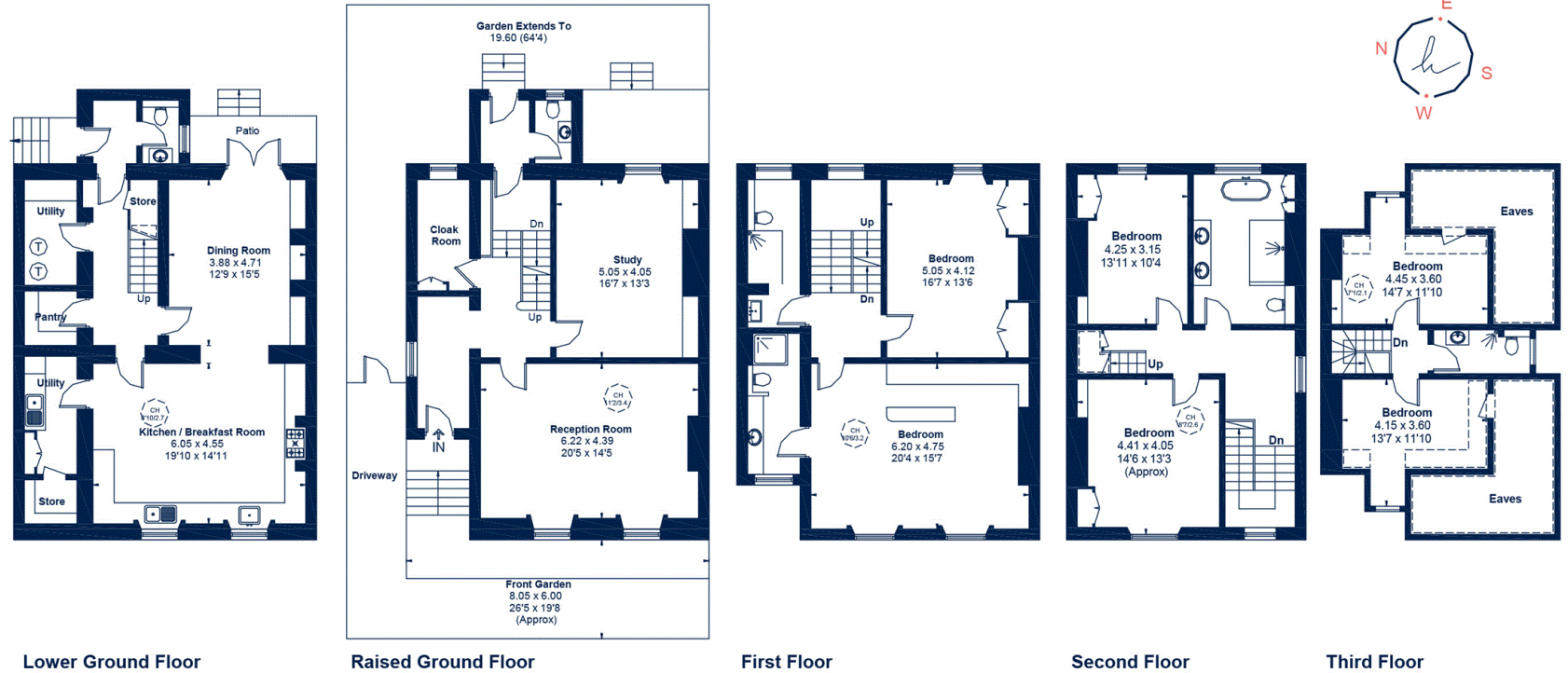
Third floor = 323 sq. ft. (30 sq. m.)

Reduced headroom Eaves = 314 sq. ft. (29.2 sq. m.)

Total = 3854 sq. ft. (358.1 sq. m.)

= Reduced height below 1.5m

= Ceiling Height



This plan is for layout guidance only. Not drawn to scale unless stated. Windows and door openings are approximate. Whilst every care is taken in the preparation of this plan, please check all dimensions, shapes and compass bearings before making any decisions reliant upon them. ID 737354