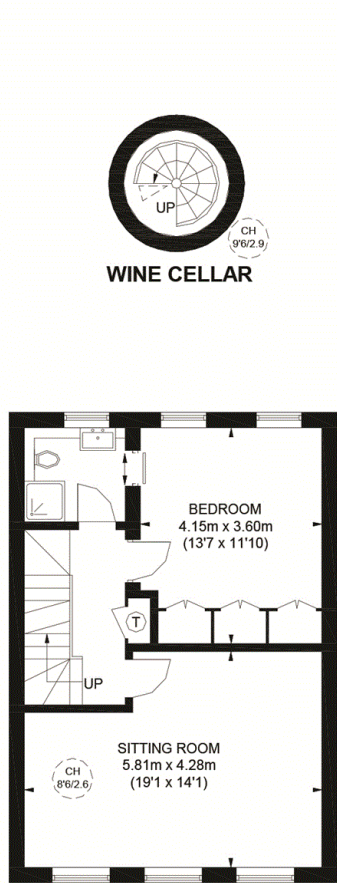
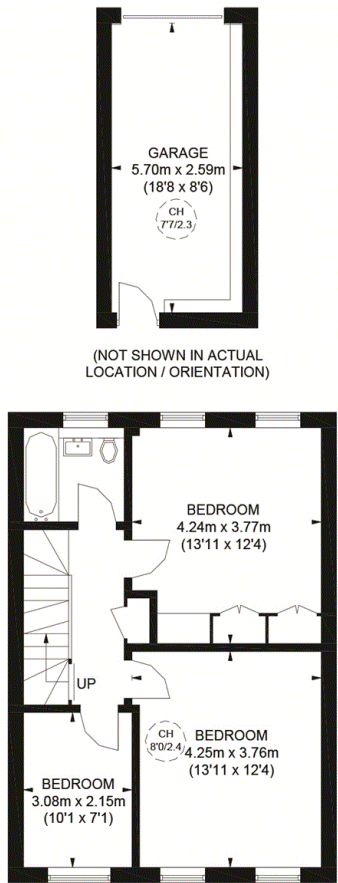


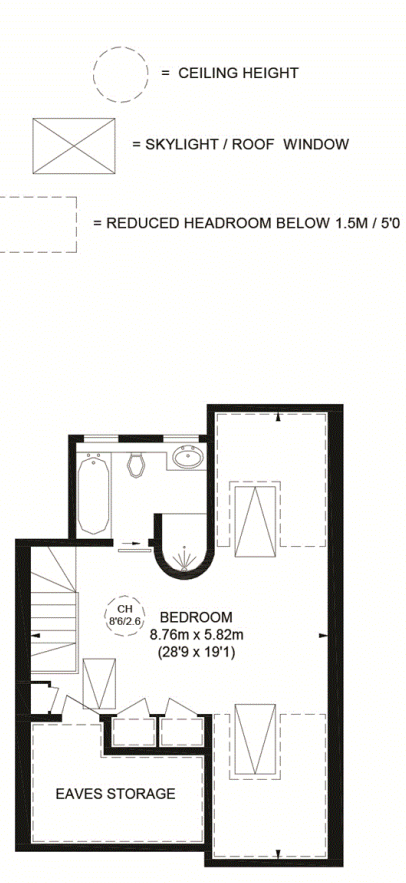
GROUND FLOOR



FIRST FLOOR

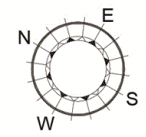
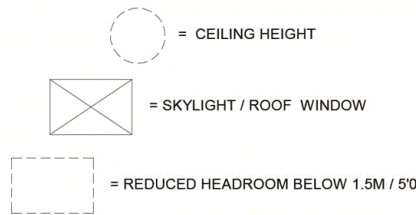


SECOND FLOOR



THIRD FLOOR

ALWYNE SQUARE



APPROXIMATE GROSS INTERNAL AREA (EXCLUDING REDUCED HEADROOM)

GROUND FLOOR = 672 SQ. FT. (62.4 SQ. M.)

FIRST FLOOR = 549 SQ. FT. (51 SQ. M.)

SECOND FLOOR = 549 SQ. FT. (51 SQ. M.)

THIRD FLOOR = 310 SQ. FT. (28.8 SQ. M.)

GARAGE = 160 SQ. FT. (14.9 SQ. M.)

WINE CELLAR = 35 SQ. FT. (3.3 SQ. M.)

REDUCED HEADROOM
202 SQ. FT. (18.8 SQ. M.)

TOTAL = 2477 SQ. FT. (230.2 SQ. M.)

This plan is for layout guidance only. Not drawn to scale unless stated. Windows and door openings are approximate. Whilst every care is taken in the preparation of this plan, please check all dimensions, shapes and compass bearings before making any decisions reliant upon them. Please be advised that Countrywide / our agents have not seen or reviewed any building regulations or planning permission in relation to works carried out to the property (ID708678)