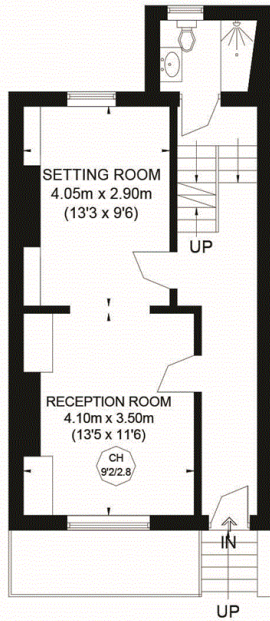
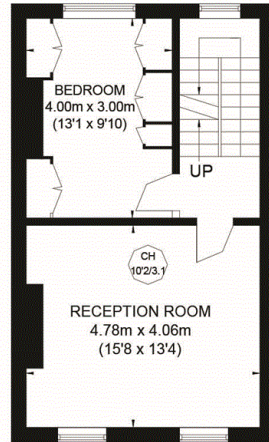


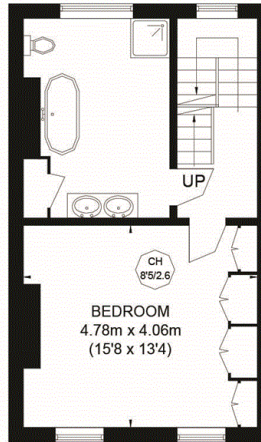
**LOWER GROUND FLOOR**



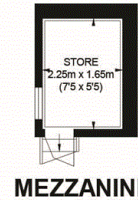
**GROUND FLOOR**



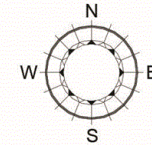
**FIRST FLOOR**



**SECOND FLOOR**



## GIBSON SQUARE



APPROXIMATE GROSS INTERNAL AREA  
(EXCLUDING REDUCED HEADROOM)

LOWER GROUND FLOOR = 406 SQ. FT. (37.7 SQ. M.)

GROUND FLOOR = 468 SQ. FT. (43.5 SQ. M.)

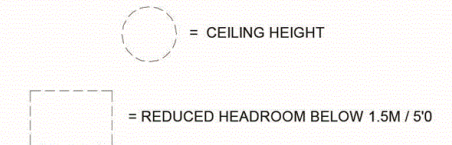
FIRST FLOOR = 428 SQ. FT. (39.8 SQ. M.)

SECOND FLOOR = 428 SQ. FT. (39.8 SQ. M.)

VAULTS = 117 SQ. FT. (10.9 SQ. M.)

REDUCED HEADROOM & MEZZANINE  
61 SQ. FT. (5.7 SQ. M.)

**TOTAL = 1910 SQ. FT. (177.4 SQ. M.)**



This plan is for layout guidance only. Not drawn to scale unless stated. Windows and door openings are approximate. Whilst every care is taken in the preparation of this plan, please check all dimensions, shapes and compass bearings before making any decisions reliant upon them. Please be advised that Countrywide / our agents have not seen or reviewed any building regulations or planning permission in relation to works carried out to the property (ID698465)