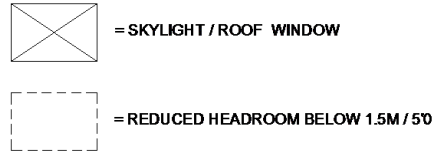
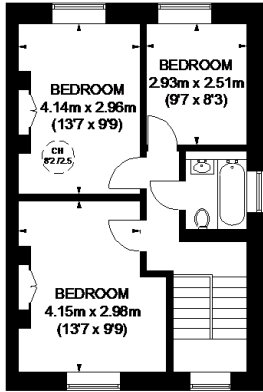
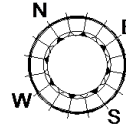
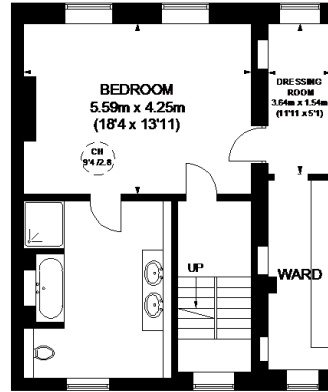


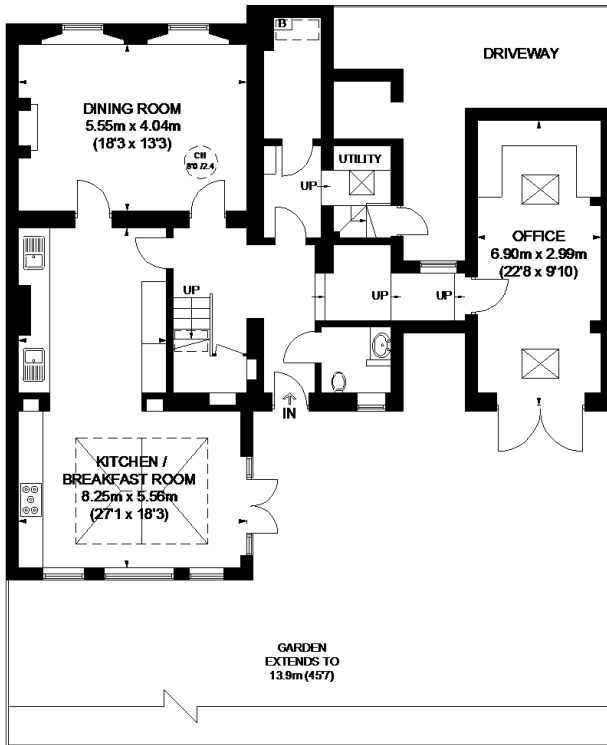
ALWYNE ROAD



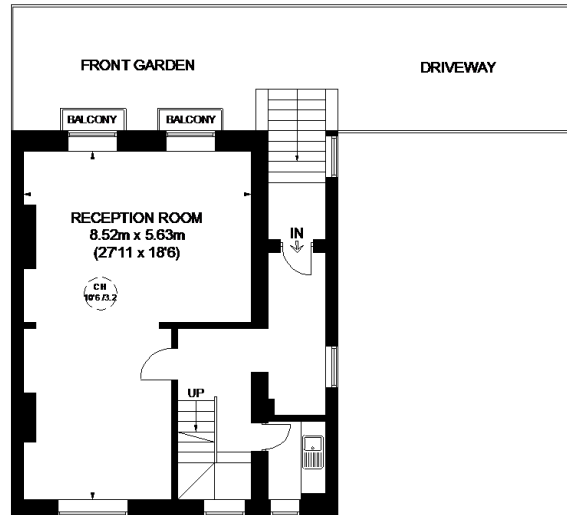
SECOND FLOOR



FIRST FLOOR

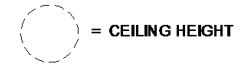


LOWER GROUND FLOOR



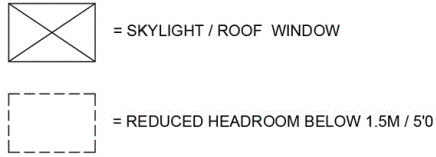
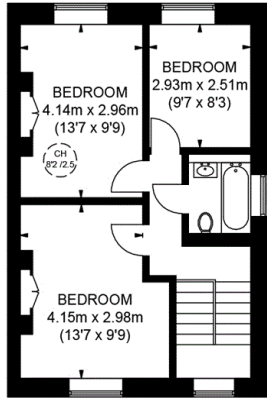
RAISED GROUND FLOOR

APPROXIMATE GROSS INTERNAL AREA
(EXCLUDING REDUCED HEADROOM)
 LOWER GROUND FLOOR = 1278 SQ. FT. (118.7 SQ. M.)
 RAISED GROUND FLOOR = 622 SQ. FT. (57.8 SQ. M.)
 FIRST FLOOR = 687 SQ. FT. (63.8 SQ. M.)
 SECOND FLOOR = 505 SQ. FT. (46.9 SQ. M.)
 REDUCED HEADROOM
 12 SQ. FT. (1.1 SQ. M.)
TOTAL = 3104 SQ. FT. (288.3 SQ. M.)

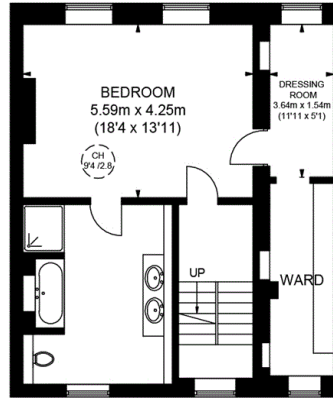


This plan is for layout guidance only. Not drawn to scale unless stated. Windows and door openings are approximate. Whilst every care is taken in the preparation of this plan, please check all dimensions, shapes and compass bearings before making any decisions reliant upon them. Please be advised that Countrywide / our agents have not seen or reviewed any building regulations or planning permission in relation to works carried out to the property (ID615141)

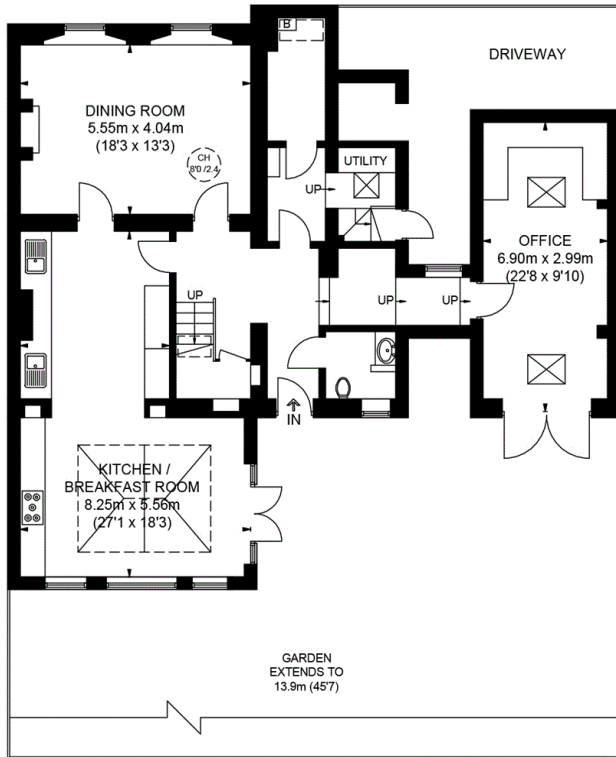
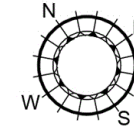
ALWYNE ROAD



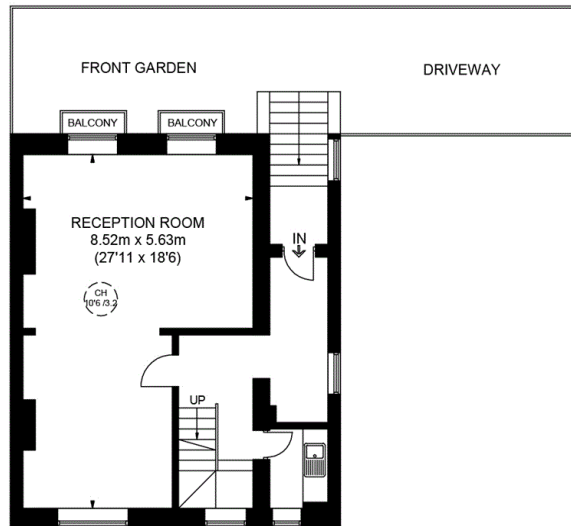
SECOND FLOOR



FIRST FLOOR

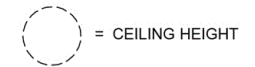


LOWER GROUND FLOOR



RAISED GROUND FLOOR

APPROXIMATE GROSS INTERNAL AREA
 (EXCLUDING REDUCED HEADROOM)
 LOWER GROUND FLOOR = 1278 SQ. FT. (118.7 SQ. M.)
 RAISED GROUND FLOOR = 622 SQ. FT. (57.8 SQ. M.)
 FIRST FLOOR = 687 SQ. FT. (63.8 SQ. M.)
 SECOND FLOOR = 505 SQ. FT. (46.9 SQ. M.)
 REDUCED HEADROOM
 12 SQ. FT. (1.1 SQ. M.)
 TOTAL = 3104 SQ. FT. (288.3 SQ. M.)



This plan is for layout guidance only. Not drawn to scale unless stated. Windows and door openings are approximate. Whilst every care is taken in the preparation of this plan, please check all dimensions, shapes and compass bearings before making any decisions reliant upon them. Please be advised that Countrywide / our agents have not seen or reviewed any building regulations or planning permission in relation to works carried out to the property (ID615141)