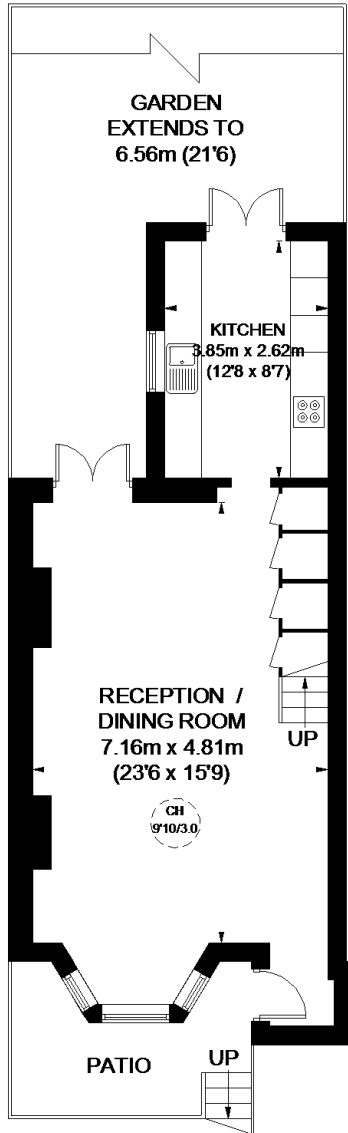
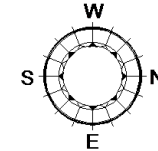
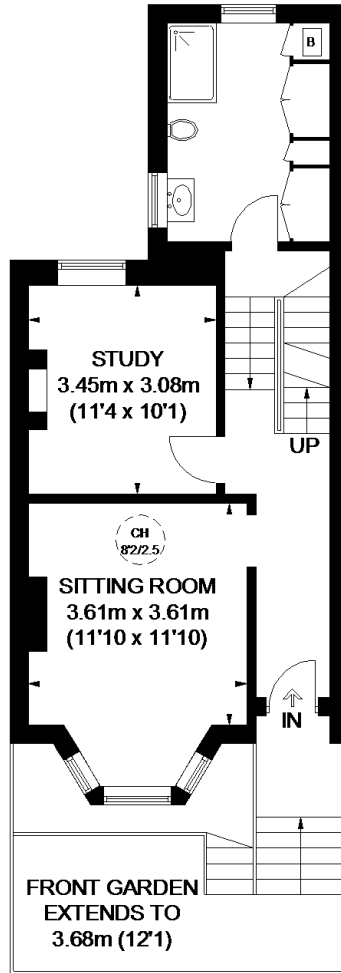


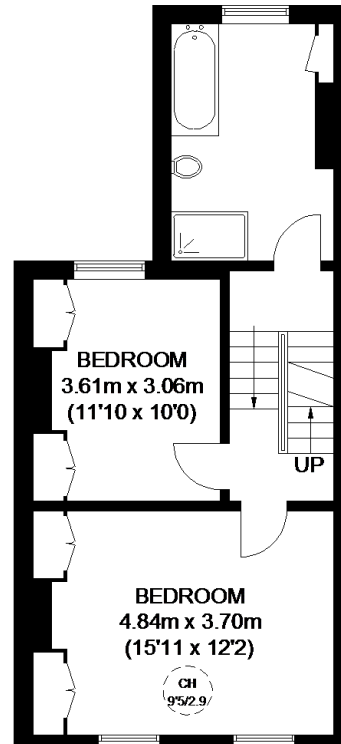
# LECONFIELD ROAD



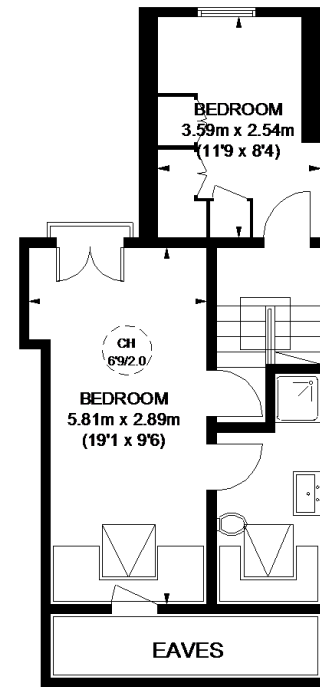
**LOWER GROUND FLOOR**



**GROUND FLOOR**



**FIRST FLOOR**



**SECOND FLOOR**

**APPROXIMATE GROSS INTERNAL AREA  
(EXCLUDING REDUCED HEADROOM & EAVES)**

**LOWER GROUND FLOOR**  
532 SQ. FT. (49.4 SQ. M.)




**GROUND FLOOR = 512 SQ. FT. (47.6 SQ. M.)**

**FIRST FLOOR = 508 SQ. FT. (47.2 SQ. M.)**

**SECOND FLOOR = 353 SQ. FT. (32.8 SQ. M.)**

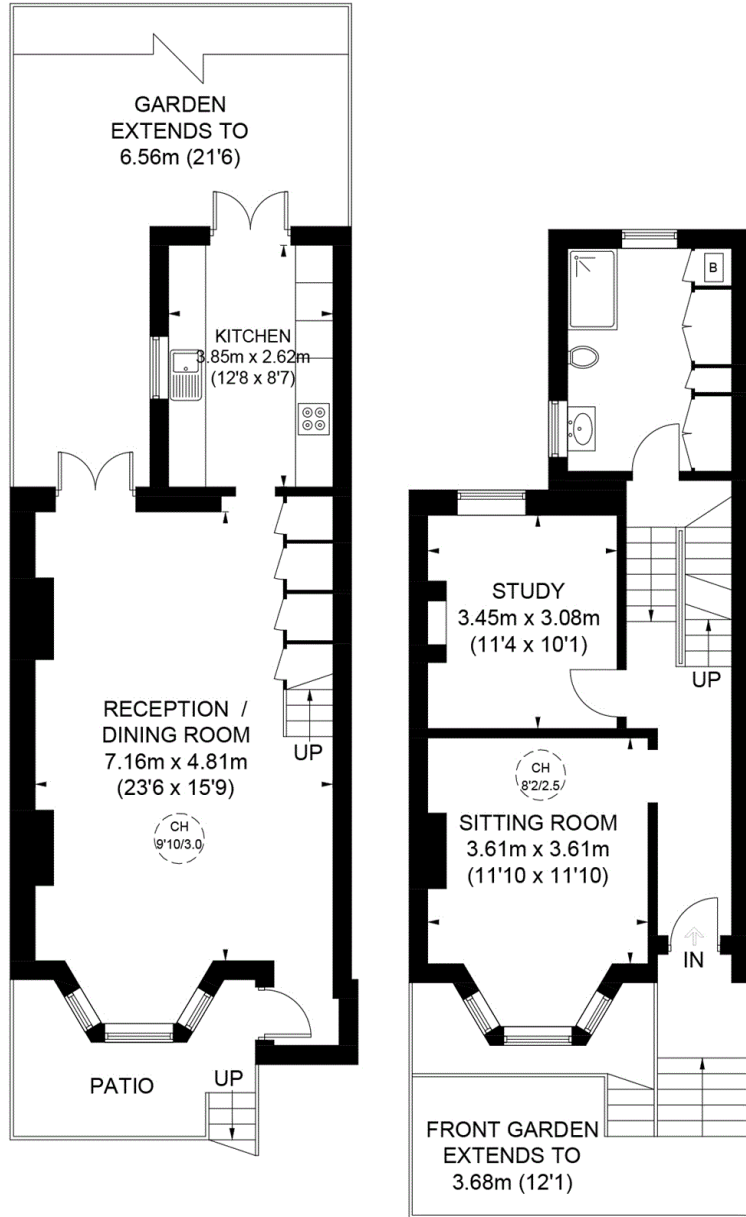
**REDUCED HEADROOM**  
90 SQ. FT. (8.4 SQ. M.)

**TOTAL = 1995 SQ. FT. (185.4 SQ. M.)**

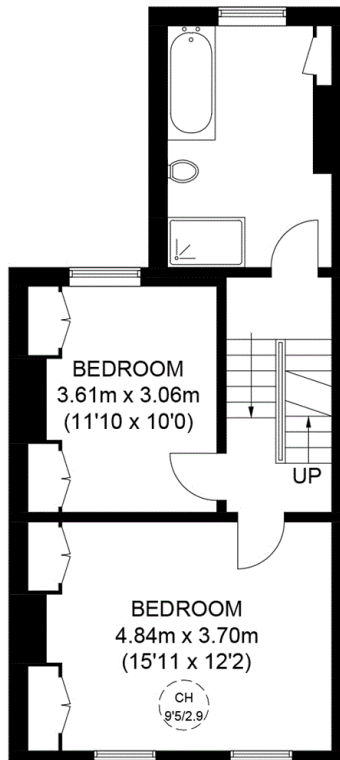
-  = CEILING HEIGHT
-  = SKYLIGHT / ROOF WINDOW
-  = REDUCED HEADROOM BELOW 1.5M / 5'0"

This plan is for layout guidance only. Not drawn to scale unless stated. Windows and door openings are approximate. Whilst every care is taken in the preparation of this plan, please check all dimensions, shapes and compass bearings before making any decisions reliant upon them. Please be advised that Countrywide / our agents have not seen or reviewed any building regulations or planning permission in relation to works carried out to the property (ID611167)

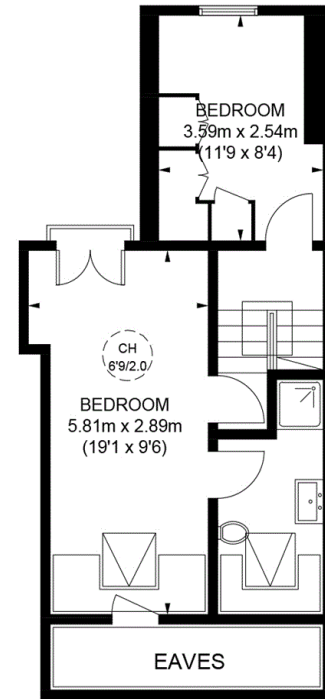
# LECONFIELD ROAD



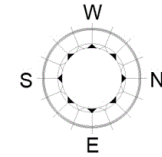
**LOWER GROUND FLOOR    GROUND FLOOR**



**FIRST FLOOR**



**SECOND FLOOR**



APPROXIMATE GROSS INTERNAL AREA  
(EXCLUDING REDUCED HEADROOM & EAVES)  
 LOWER GROUND FLOOR  
 532 SQ. FT. (49.4 SQ. M.)  
 GROUND FLOOR = 512 SQ. FT. (47.6 SQ. M.)  
 FIRST FLOOR = 508 SQ. FT. (47.2 SQ. M.)  
 SECOND FLOOR = 353 SQ. FT. (32.8 SQ. M.)  
 REDUCED HEADROOM  
 90 SQ. FT. (8.4 SQ. M.)  
**TOTAL = 1995 SQ. FT. (185.4 SQ. M.)**

-  = CEILING HEIGHT
-  = SKYLIGHT / ROOF WINDOW
-  = REDUCED HEADROOM BELOW 1.5M / 5'0"

This plan is for layout guidance only. Not drawn to scale unless stated. Windows and door openings are approximate. Whilst every care is taken in the preparation of this plan, please check all dimensions, shapes and compass bearings before making any decisions reliant upon them. Please be advised that Countrywide / our agents have not seen or reviewed any building regulations or planning permission in relation to works carried out to the property (ID611167)