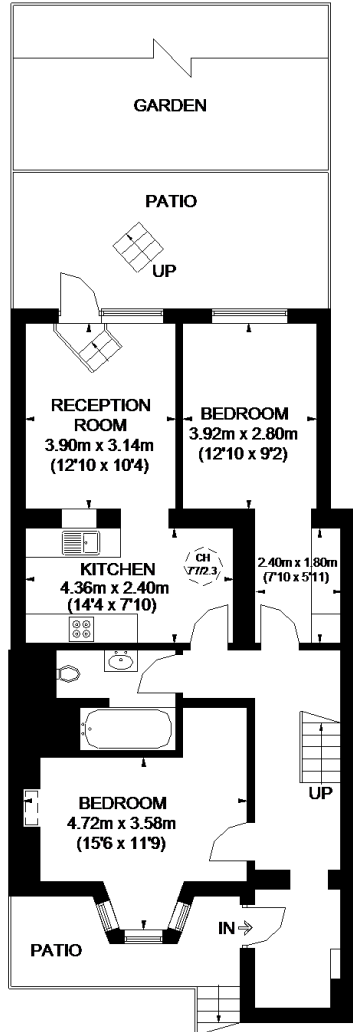
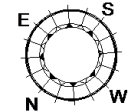
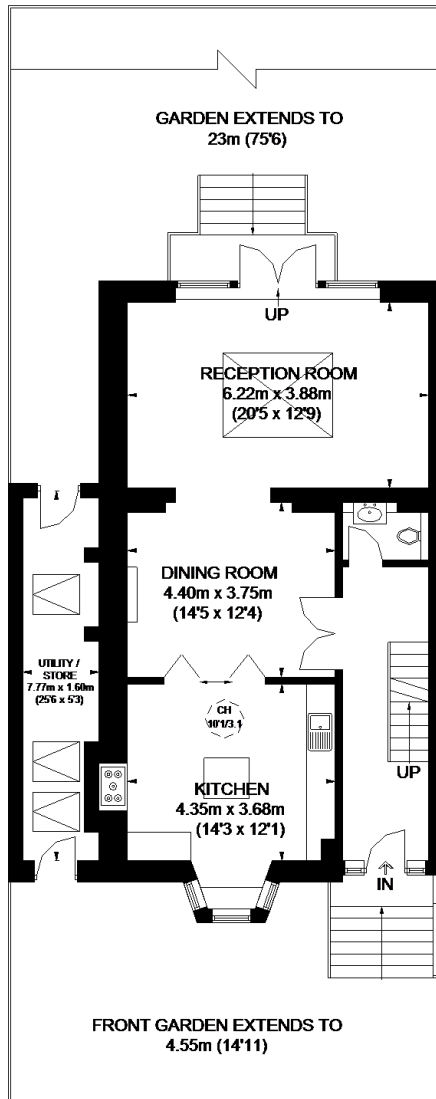


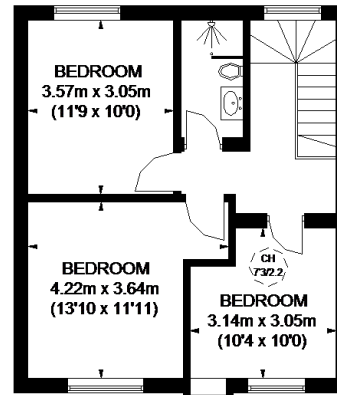
RICHMOND ROAD



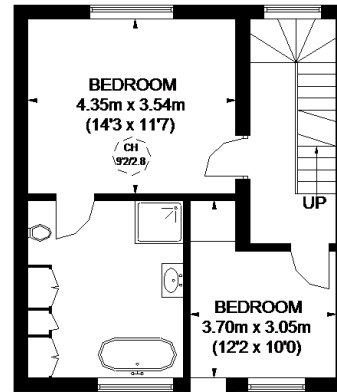
LOWER GROUND FLOOR



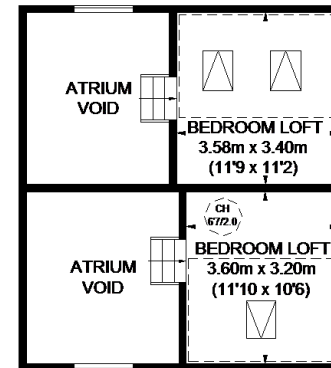
RAISED GROUND FLOOR



SECOND FLOOR



FIRST FLOOR



LOFT

APPROXIMATE GROSS INTERNAL AREA
(EXCLUDING REDUCED HEADROOM / VOID)

- LOWER GROUND FLOOR
876 SQ. FT. (81.4 SQ. M.)
- RAISED GROUND FLOOR
824 SQ. FT. (76.6 SQ. M.)
- FIRST FLOOR = 523 SQ. FT. (48.6 SQ. M.)
- SECOND FLOOR = 523 SQ. FT. (48.6 SQ. M.)
- UTILITY / STORE = 136 SQ. FT. (12.6 SQ. M.)
- LOFT = 101 SQ. FT. (9.4 SQ. M.)
- REDUCED HEADROOM
162 SQ. FT. (15.1 SQ. M.)
- TOTAL = 3145 SQ. FT. (292.3 SQ. M.)**

- = CEILING HEIGHT
- = SKYLIGHT / ROOF WINDOW
- = REDUCED HEADROOM BELOW 1.5M / 5'0"

This plan is for layout guidance only. Not drawn to scale unless stated. Windows and door openings are approximate. Whilst every care is taken in the preparation of this plan, please check all dimensions, shapes and compass bearings before making any decisions reliant upon them. Please be advised that Countrywide / our agents have not seen or reviewed any building regulations or planning permission in relation to works carried out to the property (ID548140).