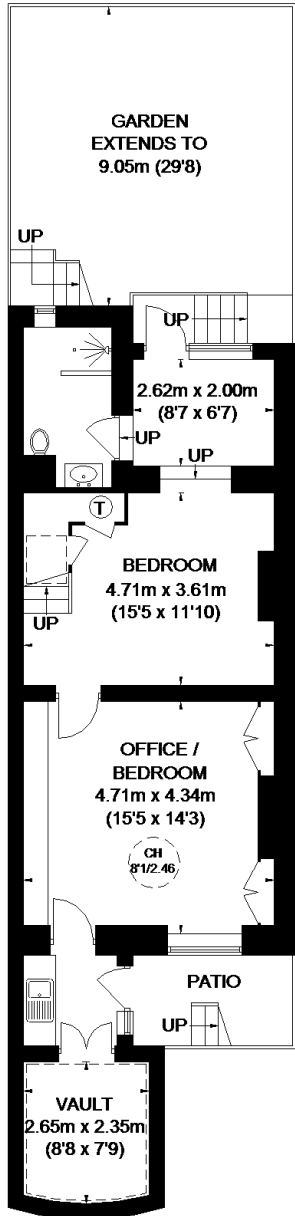
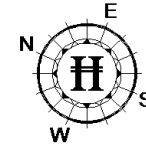
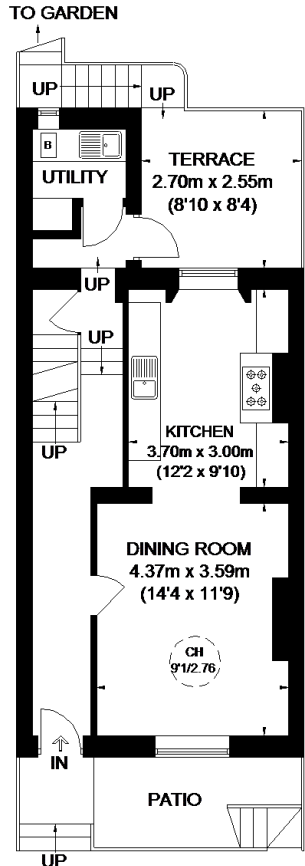


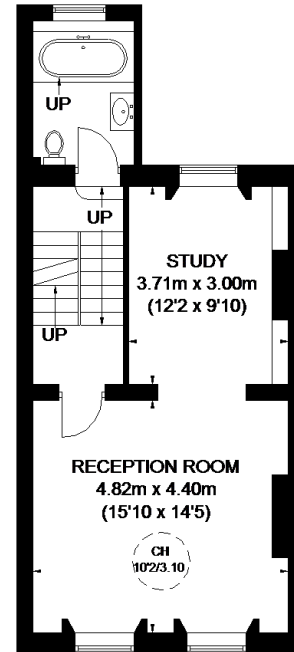
# MYDDELTON SQUARE



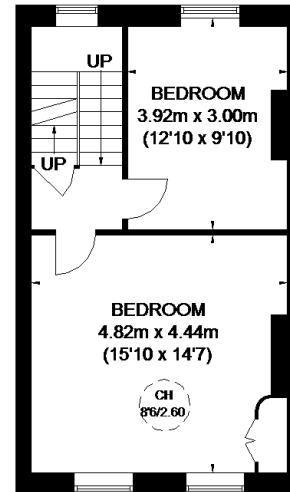
**LOWER GROUND FLOOR**



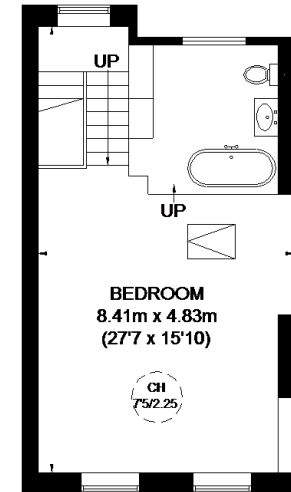
**RAISED GROUND FLOOR**



**FIRST FLOOR**



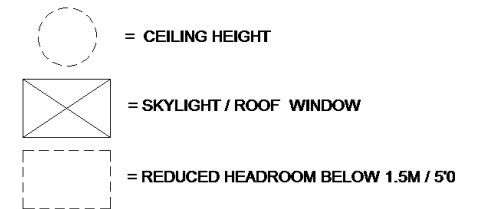
**SECOND FLOOR**



**THIRD FLOOR**

APPROXIMATE GROSS INTERNAL AREA  
(EXCLUDING REDUCED HEADROOM / VAULT)

- LOWER GROUND FLOOR  
588 SQ. FT. (54.6 SQ. M.)
- RAISED GROUND FLOOR  
492 SQ. FT. (45.7 SQ. M.)
- FIRST FLOOR = 495 SQ. FT. (46.0 SQ. M.)
- SECOND FLOOR = 433 SQ. FT. (40.2 SQ. M.)
- THIRD FLOOR = 420 SQ. FT. (39.0 SQ. M.)
- REDUCED HEADROOM / VAULT  
76 SQ. FT. (7.1 SQ. M.)
- TOTAL = 2504 SQ. FT. (232.6 SQ. M.)**



This plan is for layout guidance only. Not drawn to scale unless stated. Windows and door openings are approximate. Whilst every care is taken in the preparation of this plan, please check all dimensions, shapes and compass bearings before making any decisions reliant upon them. Please be advised that Hamptons International / our agents have not seen or reviewed any building regulations or planning permission in relation to works carried out to the property (ID476477)