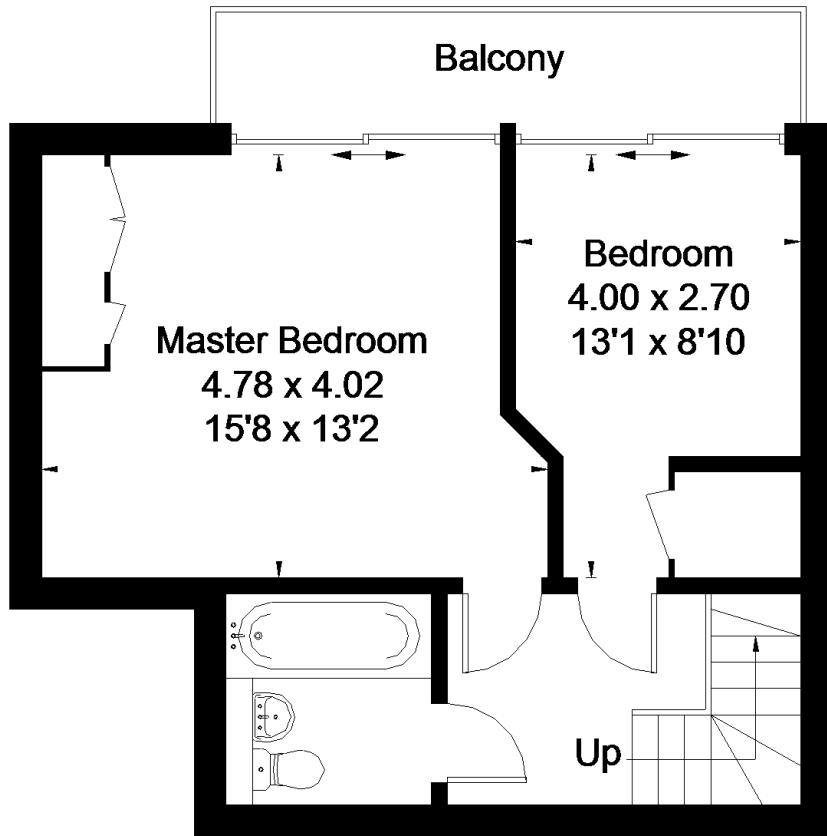
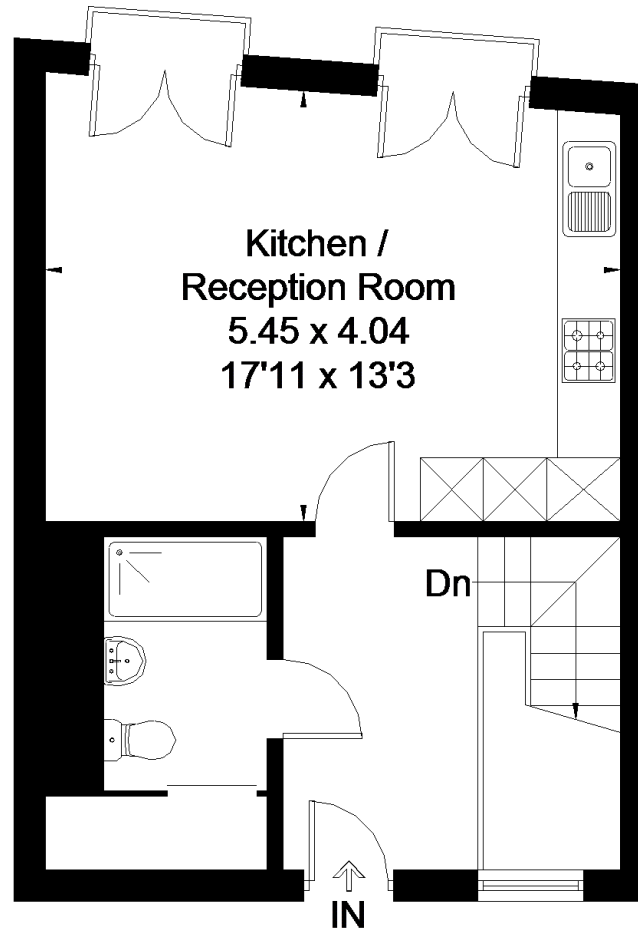


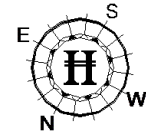
= Reduce head height below 1.5m



Lower Ground Floor



Ground Floor



Approximate Area
Lower Ground Floor = 41.0 sq m / 441 sq ft
Ground Floor = 40.4 sq m / 435 sq ft
Total = 81.4 sq m / 876 sq ft

Surveyed and drawn in accordance
with the International Property
Measurement Standards
(IPMS 2: Residential)
fourwalls-group.com 241540