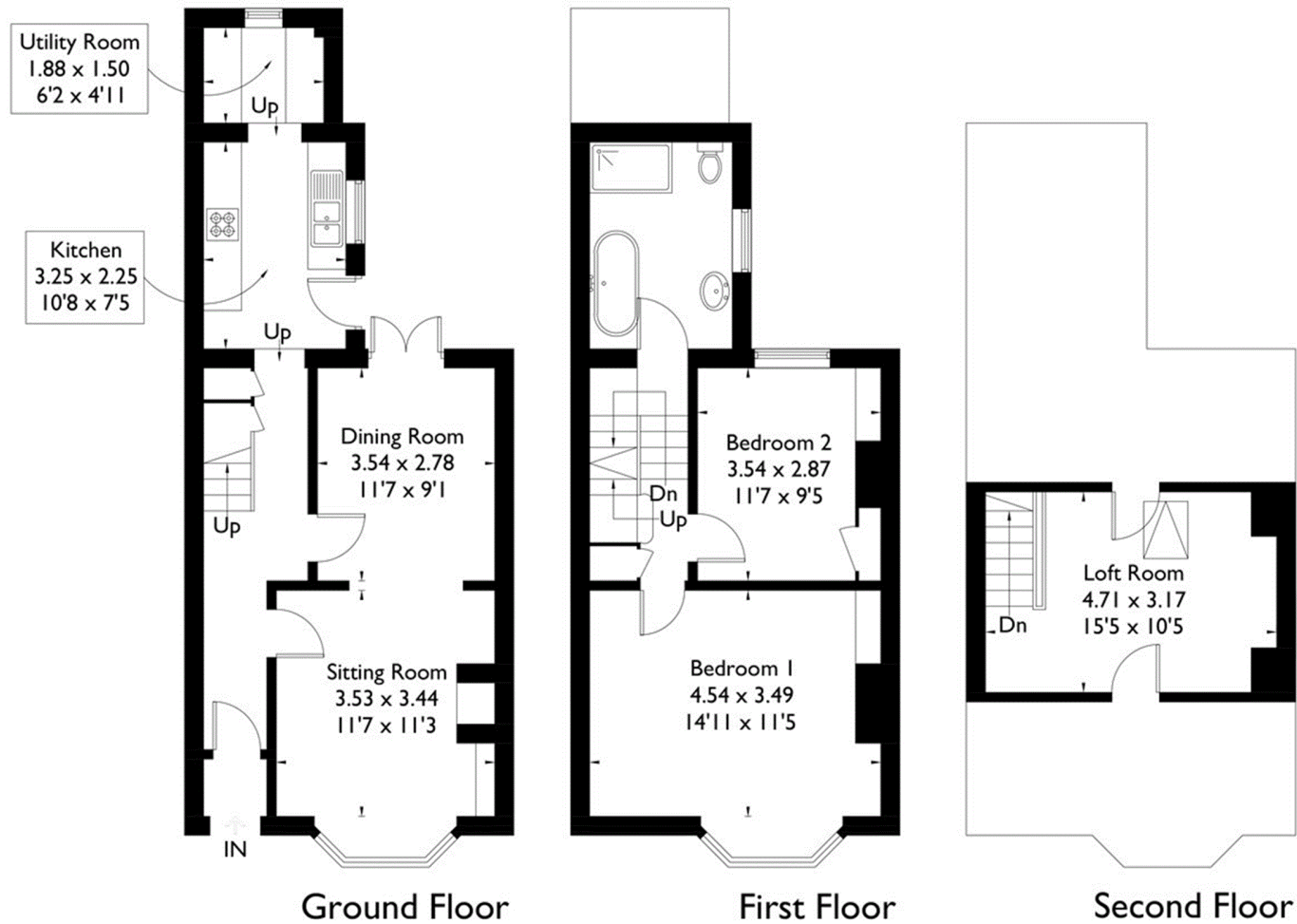


Victoria Street, Brighton

Approximate Gross Internal Area = 85.4 sq m / 919 sq ft
Loft = 14.5 sq m / 156 sq ft
Total = 99.9 sq m / 1075 sq ft



FLOORPLANZ © 2018 0203 9056099 Ref: 209545

This plan is for layout guidance only. Drawn in accordance with RICS guidelines. Not drawn to scale unless stated. Windows & door openings are approximate. Whilst every care is taken in the preparation of this plan, please check all dimensions, shapes & compass bearings before making any decisions reliant upon them.