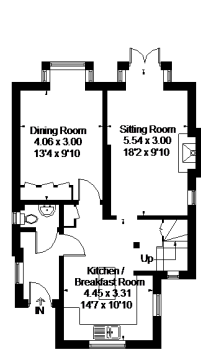
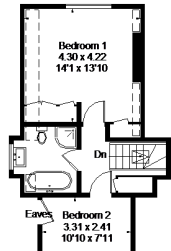


Old Holbrook, Horsham

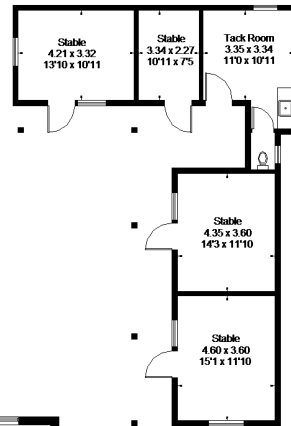
Approximate Gross Internal Area
 House = 256.7 sq m / 2763 sq ft
 Loft = 77 sq m / 829 sq ft
 The Cottage = 93.6 sq m / 1007 sq ft
 Garage = 33 sq m / 355 sq ft
 Stable Block = 70 sq m / 753 sq ft
 Total = 530.3 sq m / 5707 sq ft



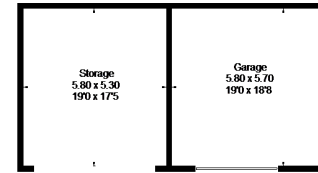
Cottage - Ground Floor
 (Not Shown In Actual Location / Orientation)



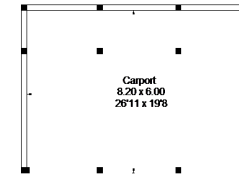
Cottage - First Floor



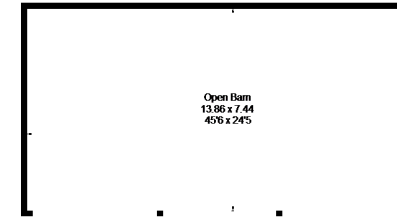
(Not Shown In Actual Location / Orientation)



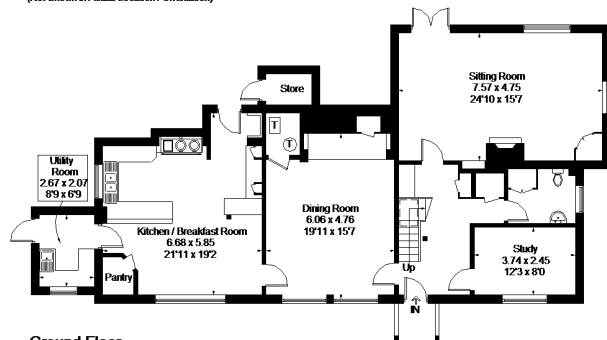
(Not Shown In Actual Location / Orientation)



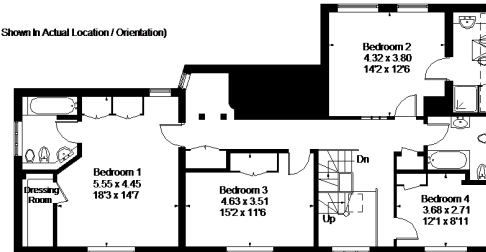
(Not Shown In Actual Location / Orientation)



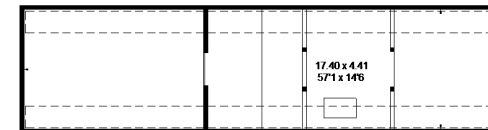
(Not Shown In Actual Location / Orientation)



Ground Floor



First Floor



Second Floor (Loft)

FLOORPLANZ © 2017 0203 9056099 Ref: 191307

This plan is for layout guidance only. Drawn in accordance with RICS guidelines. Not drawn to scale unless stated. Windows & door openings are approximate. Whilst every care is taken in the preparation of this plan, please check all dimensions, shapes & compass bearings before making any decisions reliant upon them.