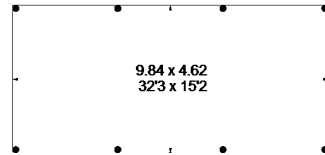


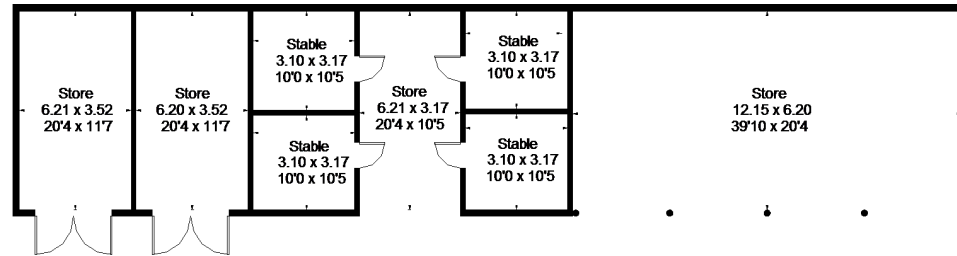
# Ifield Wood, Ifield, Crawley

Approximate Gross Internal Area = 452.8 sq m / 4874 sq ft  
 (Excluding Void / Outbuilding)  
 Garage = 66.5 sq m / 716 sq ft  
 Stable Block = 162.4 sq m / 1748 sq ft  
 Total = 681.7 sq m / 7337 sq ft



**Outbuilding**

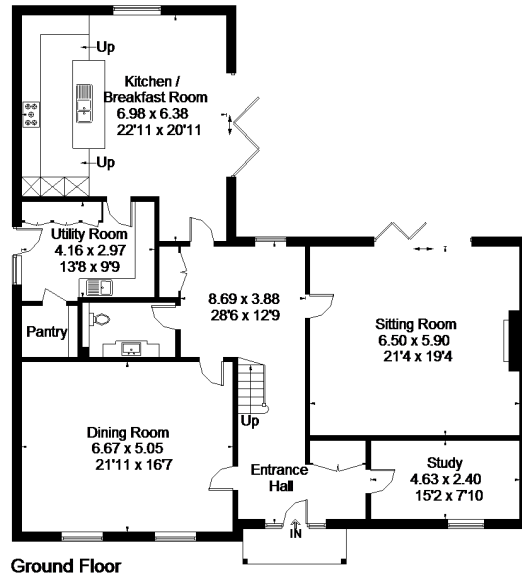
(Not Shown In Actual Location / Orientation)



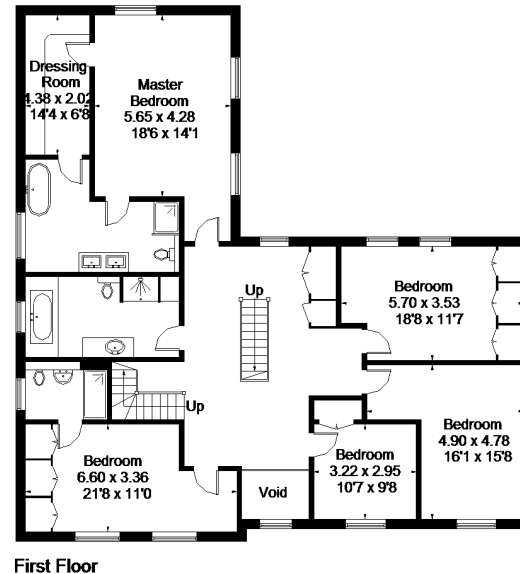
**Stable Block**

(Not Shown In Actual Location / Orientation)

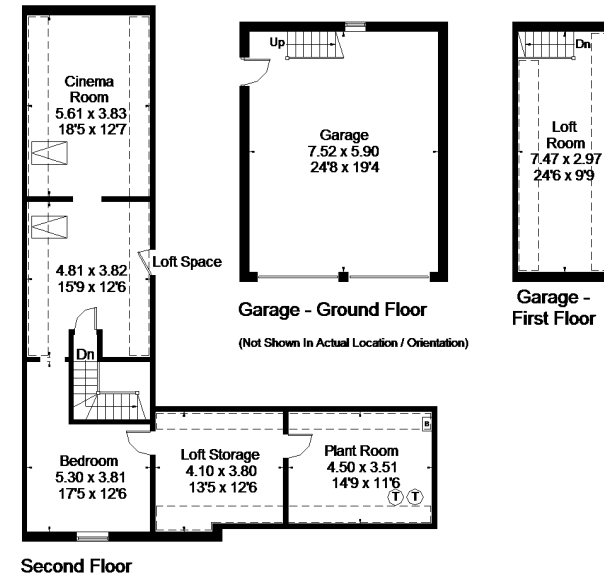
= Reduced headroom below 1.5m / 5'0



**Ground Floor**



**First Floor**



**Second Floor**

**Garage - Ground Floor**  
(Not Shown In Actual Location / Orientation)

**Garage - First Floor**

FLOORPLANZ © 2018 0203 9056099 Ref: 223017

This plan is for layout guidance only. Drawn in accordance with RICS guidelines. Not drawn to scale unless stated. Windows & door openings are approximate. Whilst every care is taken in the preparation of this plan, please check all dimensions, shapes & compass bearings before making any decisions reliant upon them.