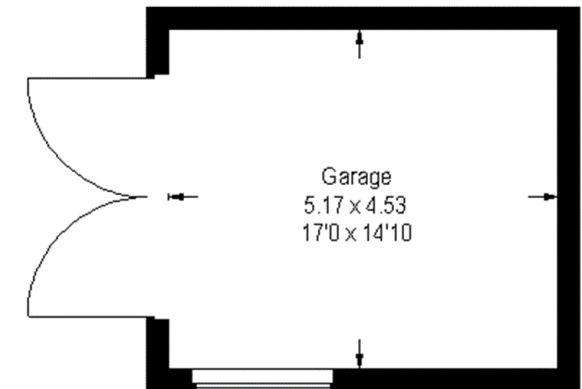
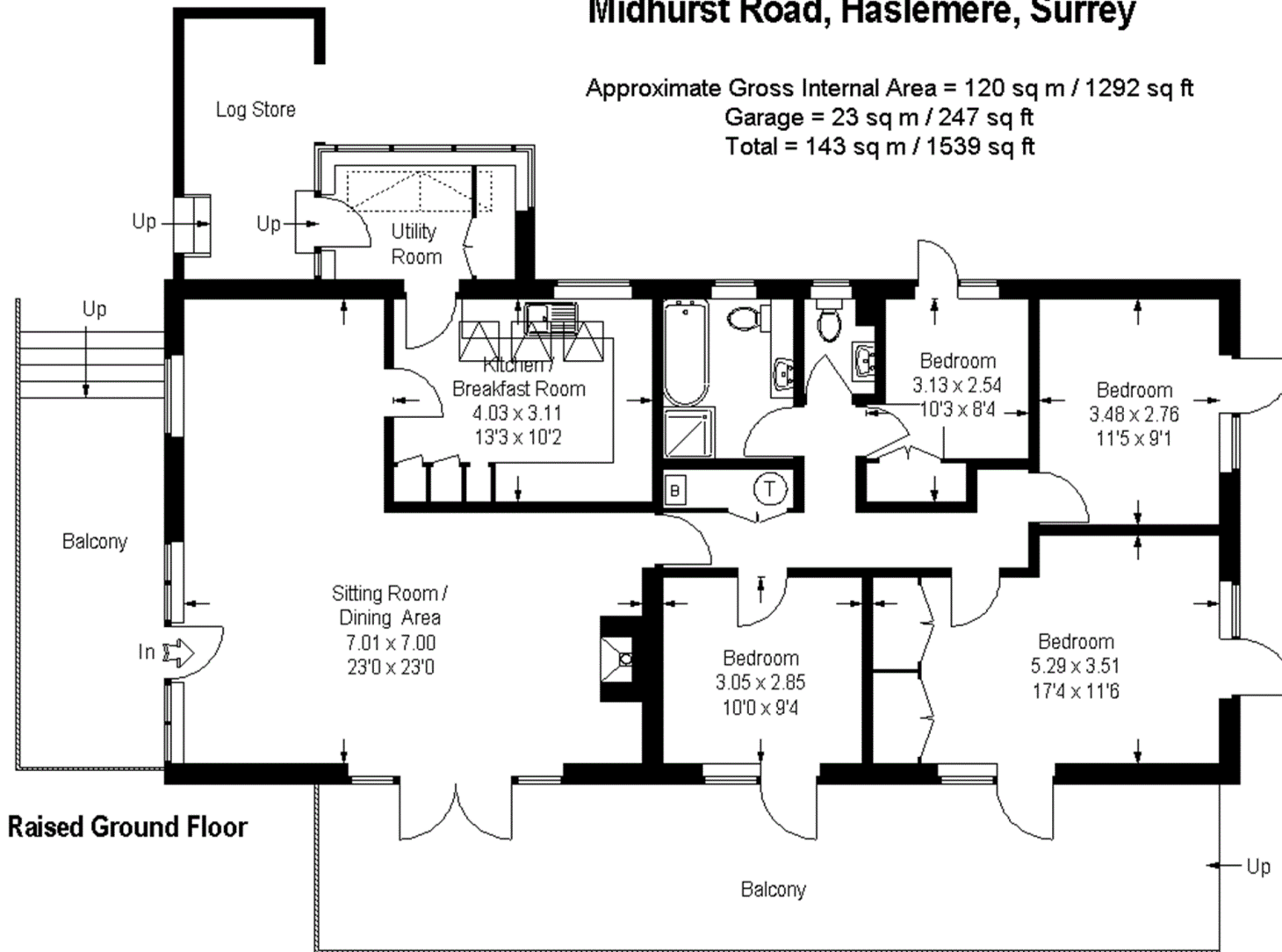
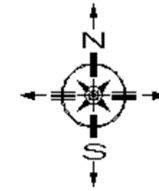


Midhurst Road, Haslemere, Surrey

Approximate Gross Internal Area = 120 sq m / 1292 sq ft
Garage = 23 sq m / 247 sq ft
Total = 143 sq m / 1539 sq ft



Raised Ground Floor

Lower Ground Floor

FLOORPLANZ © 2015 0845 6344080 Ref 145567

This illustration is for identification purposes only. Drawn in accordance with RICS guidelines. Not drawn to scale, unless stated.
It has been created using previous drawings as reference material, therefore the accuracy of information cannot be guaranteed.
Whilst every care was taken in the preparation of this plan, please check all dimensions, shapes & compass bearings before making any decisions reliant upon them.