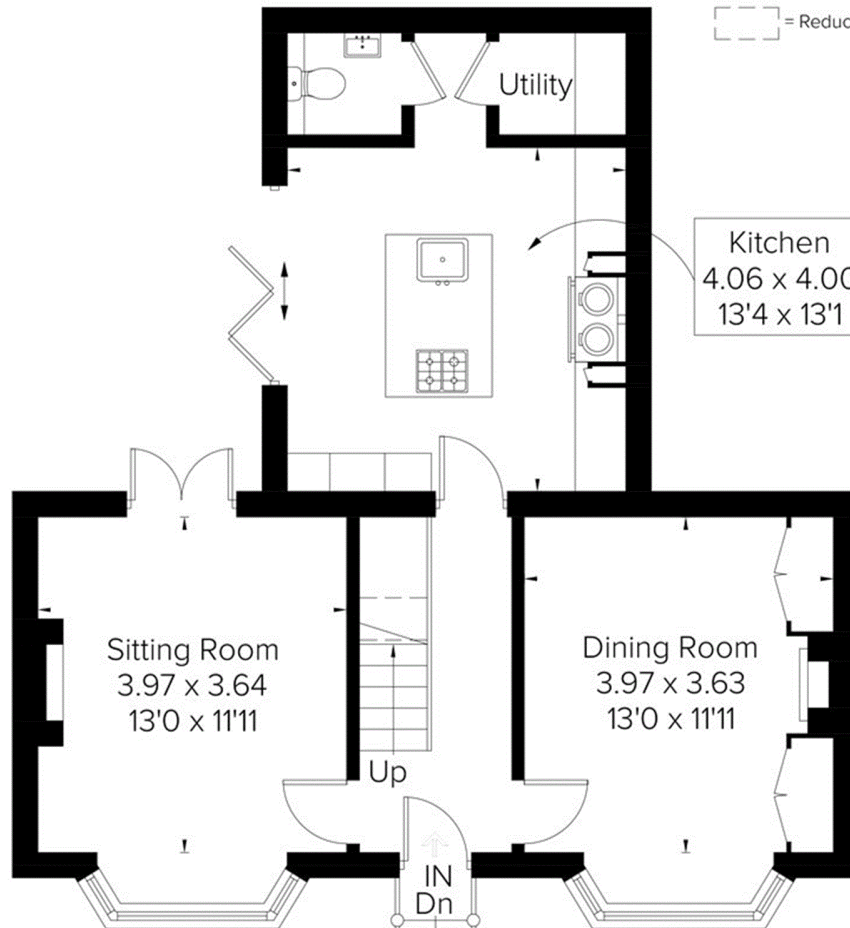
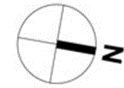
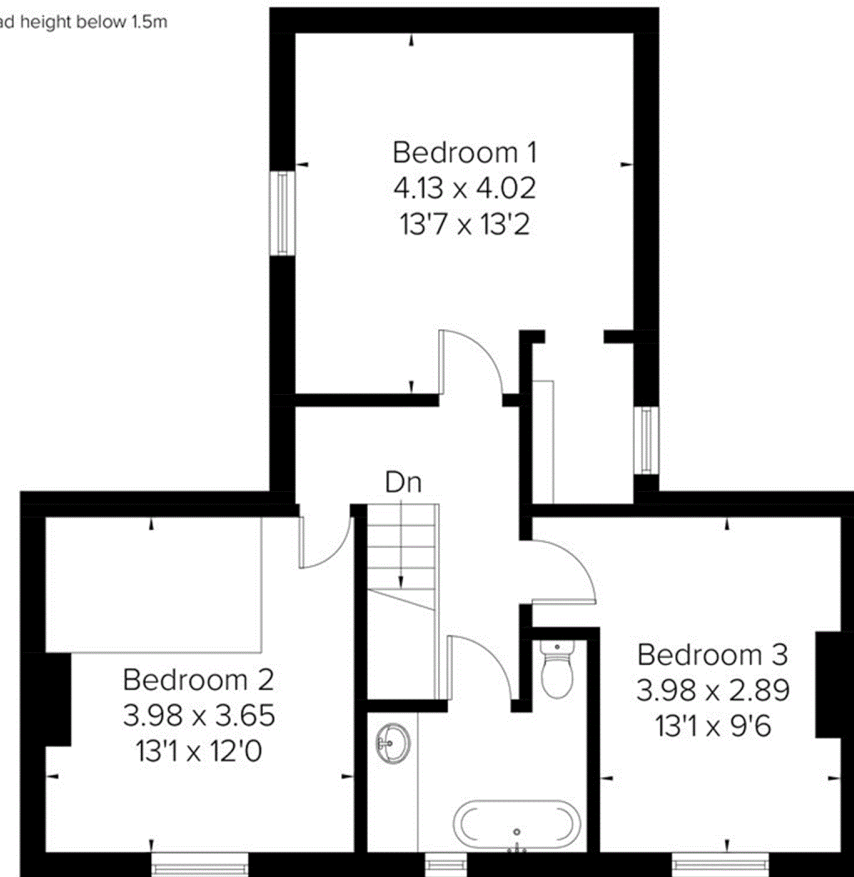


Approximate Area = 124.2 sq m / 1337 sq ft  
Including Limited Use Area (1.7 sq m / 18 sq ft)



### Ground Floor

Area = 63.7 sq m / 686 sq ft  
(Limited Use Area = 1.2 sq m / 13 sq ft)



### First Floor

Area = 60.5 sq m / 651 sq ft  
(Limited Use Area = 0.5 sq m / 5 sq ft)