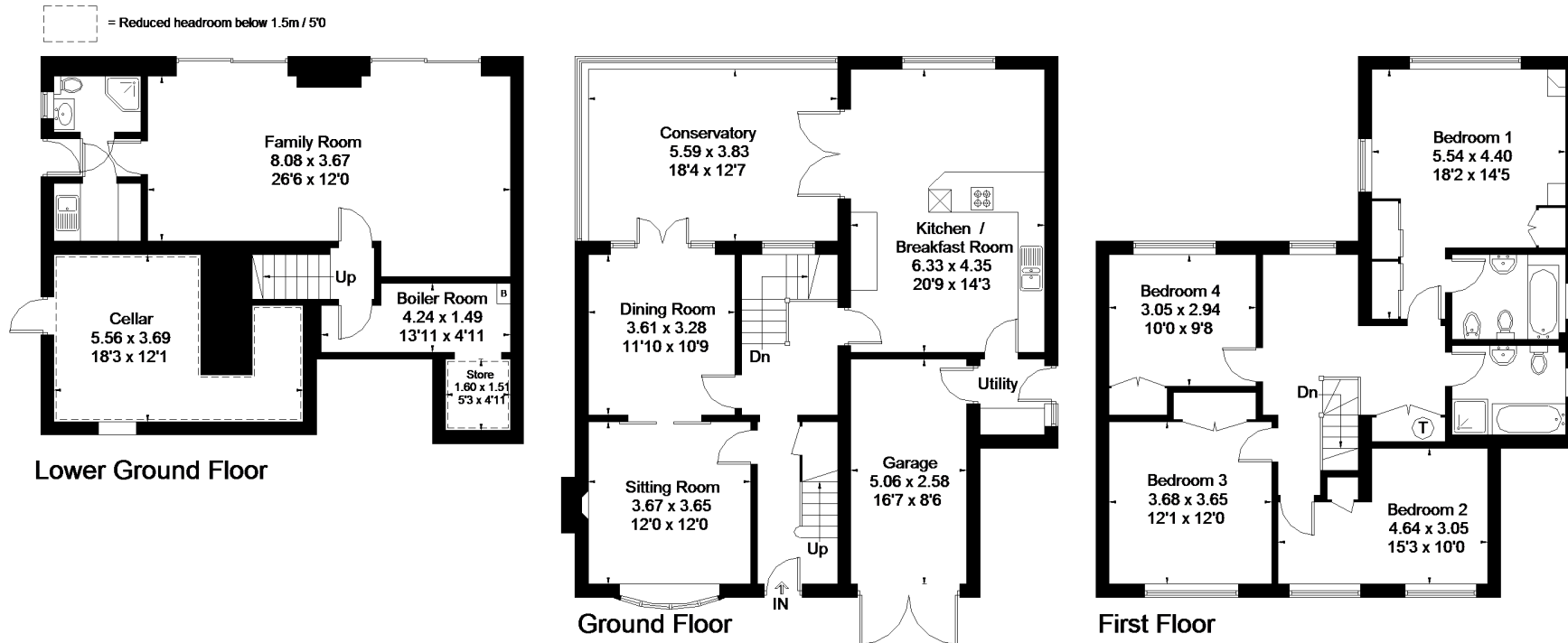
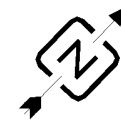


# Courts Hill Road, Haslemere

Approximate Gross Internal Area = 244.0 sq m / 2626 sq ft  
Cellar / Boiler Room / Store = 25.4 sq m / 273 sq ft  
Total = 269.4 sq m / 2899 sq ft



FLOORPLANZ © 2018 0203 9056099 Ref: 211570

This plan is for layout guidance only. Drawn in accordance with RICS guidelines. Not drawn to scale unless stated. Windows & door openings are approximate. Whilst every care is taken in the preparation of this plan, please check all dimensions, shapes & compass bearings before making any decisions reliant upon them.