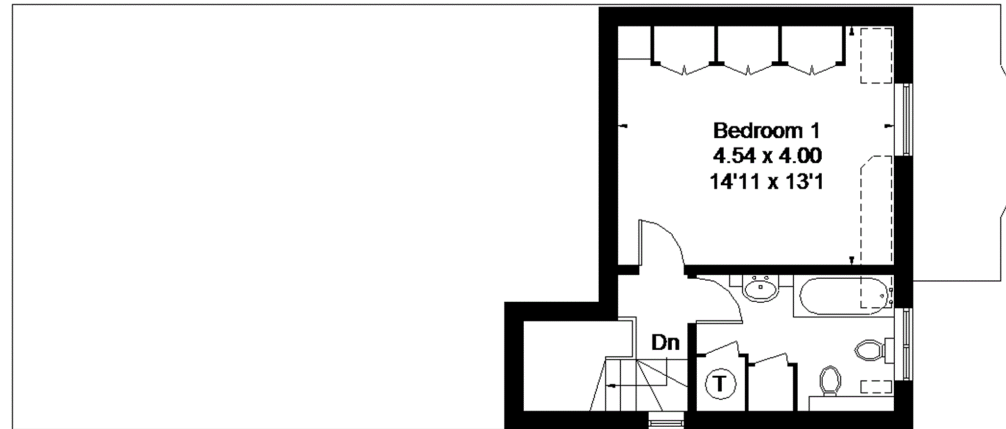


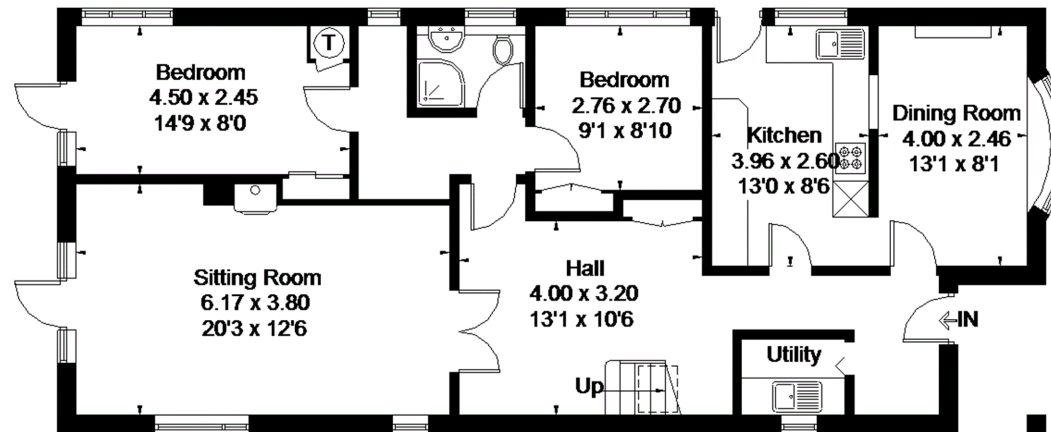
Church Path, Prestwood, Great Missenden

Approximate Gross Internal Area
127.8 sq m / 1376 sq ft



First Floor

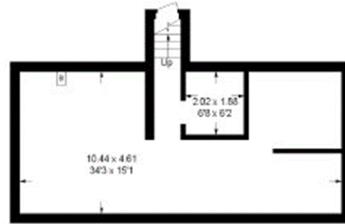
= Reduced headroom below 1.5m / 5'0



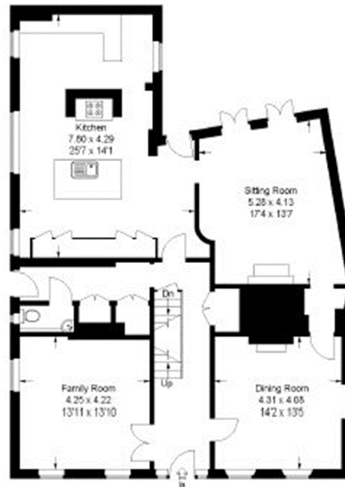
Ground Floor

FLOORPLANZ © 2015 0845 6344080 Ref: 155022

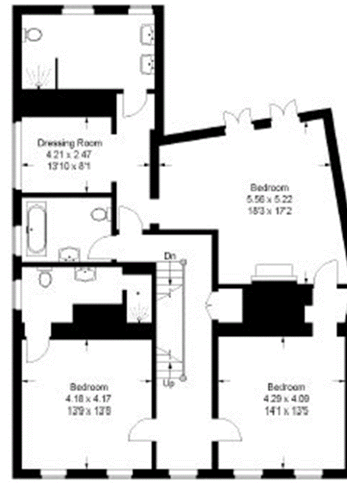
This plan is for layout guidance only. Drawn in accordance with RICS guidelines. Not drawn to scale unless stated. Windows & door openings are approximate. Whilst every care is taken in the preparation of this plan, please check all dimensions, shapes & compass bearings before making any decisions reliant upon them.



Basement



Ground Floor



First Floor



Sheet Street, Windsor

Approximate Gross Internal Area - 336 sq m / 3617 sq ft
 Basement - 49 sq m / 527 sq ft
 Total - 385 sq m / 4144 sq ft

FLOORPLAN 0-2011
0043 030000 For 8008
 This plan is for layout guidance only,
 not drawn to scale, unless stated.
 Windows & door openings are
 approximate.
 Whilst every care is taken in the
 preparation of this plan, please
 check all dimensions, shapes &
 compass bearings before making
 any decisions based upon them.



Second Floor