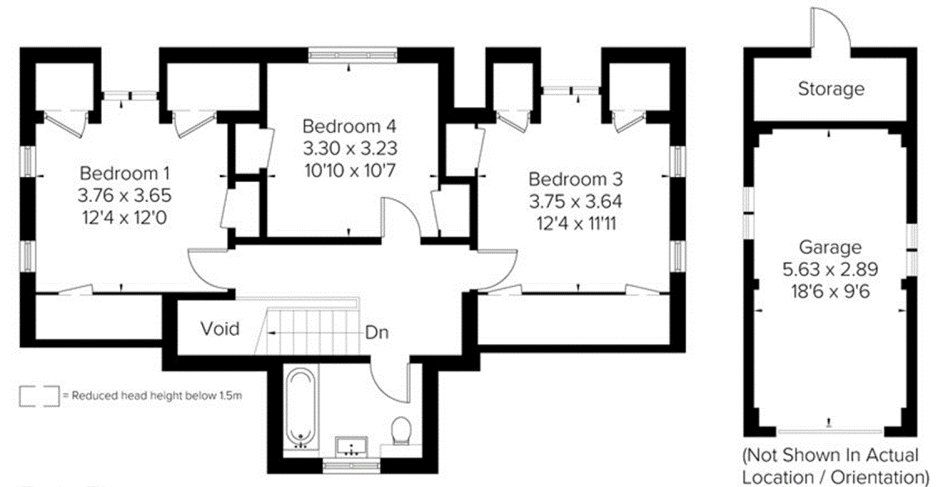
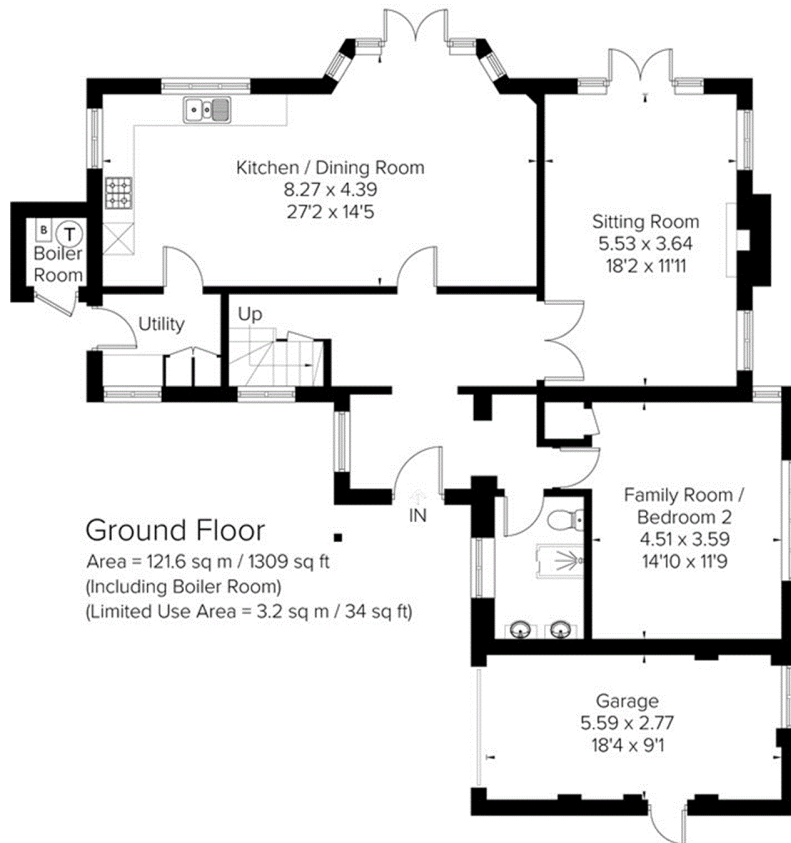




Approximate Area = 186.4 sq m / 2006 sq ft
 (Excluding Void / Including Boiler Room)
 Outbuilding = 20.2 sq m / 217 sq ft
 Garage / Store = 20.3 sq m / 218 sq ft
 Total = 226.9 sq m / 2441 sq ft
 Including Limited Use Area (13.2 sq m / 142 sq ft)



= Reduced head height below 1.5m

