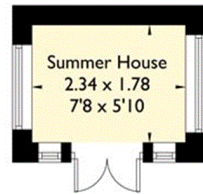
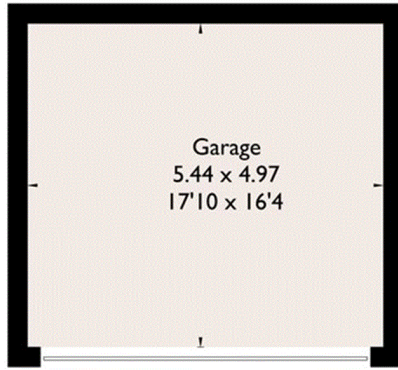
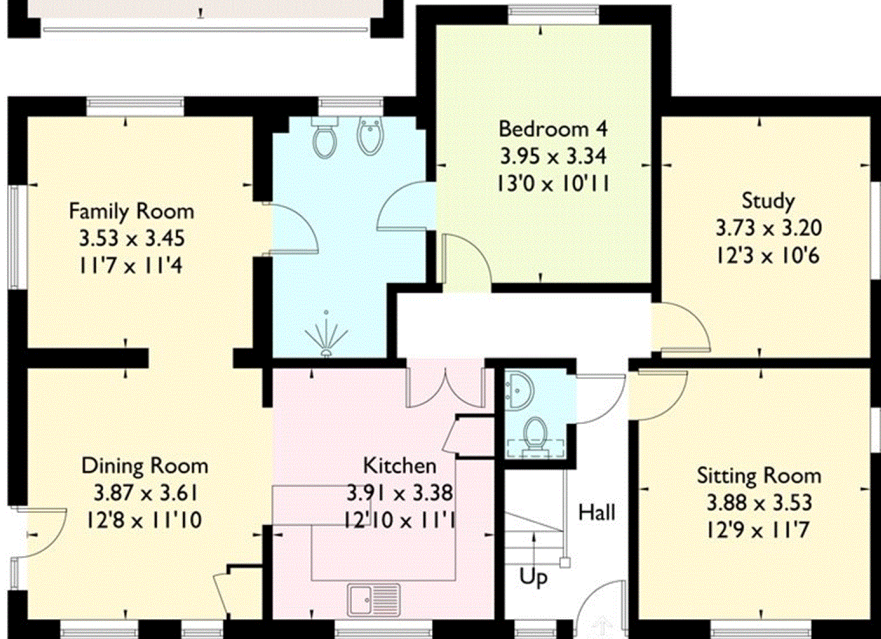


## Headington, Oxford

Approximate Gross Internal Area  
 House = 170.4 sq m / 1834 sq ft  
 Outbuildings = 31.1 sq m / 334 sq ft  
 Total = 201.5 sq m / 2168 sq ft

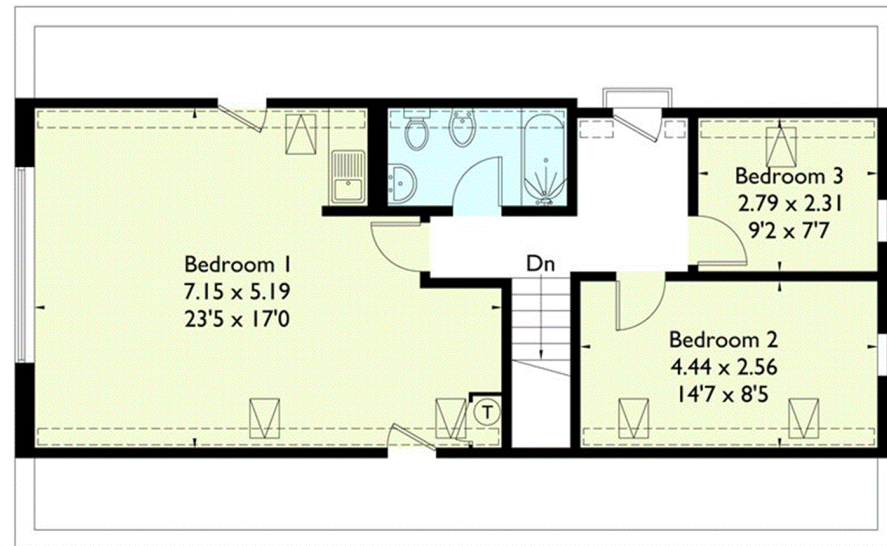


**Outbuildings**  
 (Not Shown In Actual  
 Location / Orientation)



Ground Floor

= Reduced headroom below 1.5m / 5'0



First Floor

FLOORPLANZ © 2018 0203 9056099 Ref: 205333

This plan is for layout guidance only. Drawn in accordance with RICS guidelines. Not drawn to scale unless stated. Windows & door openings are approximate. Whilst every care is taken in the preparation of this plan, please check all dimensions, shapes & compass bearings before making any decisions reliant upon them.