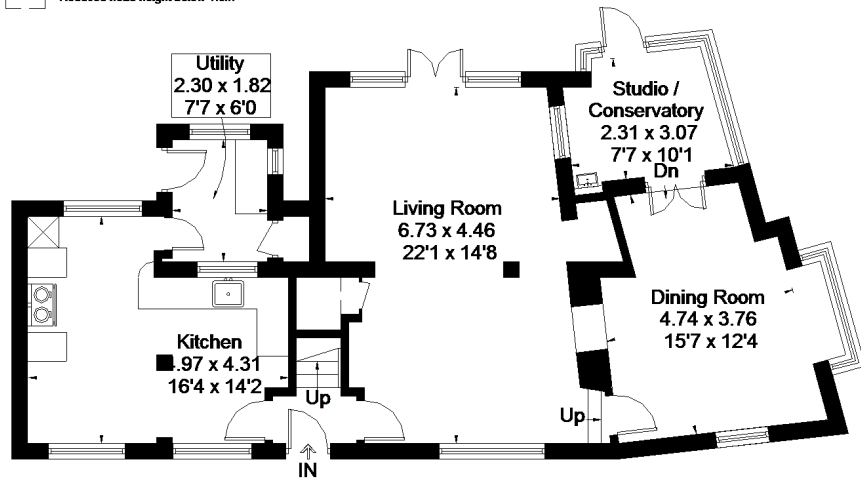


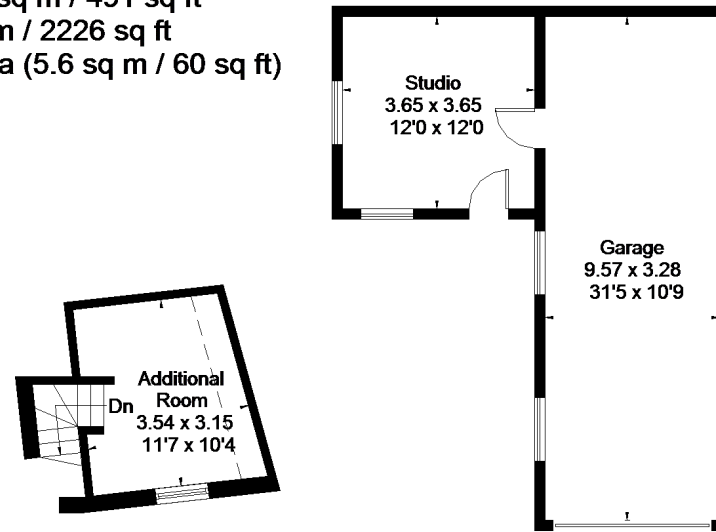
Approximate Area = 161.2 sq m / 1735 sq ft  
 Outbuilding = 45.6 sq m / 491 sq ft  
 Total = 206.8 sq m / 2226 sq ft  
 Including Limited Use Area (5.6 sq m / 60 sq ft)

= Reduced head height below 1.5m



**Ground Floor**

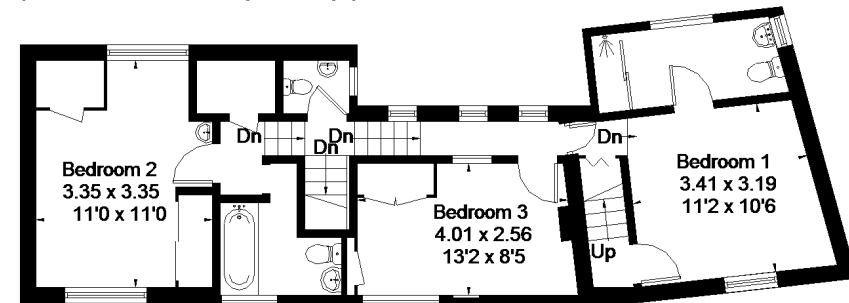
Area = 88.6 sq m / 954 sq ft  
 (Limited Use Area = 2.8 sq m / 30 sq ft)



**Second Floor**

(Not Shown In Actual Location / Orientation)

Area = 12.2 sq m / 131 sq ft  
 (Limited Use Area = 1.8 sq m / 19 sq ft)



**First Floor**

Area = 60.4 sq m / 650 sq ft  
 (Limited Use Area = 1 sq m / 11 sq ft)