

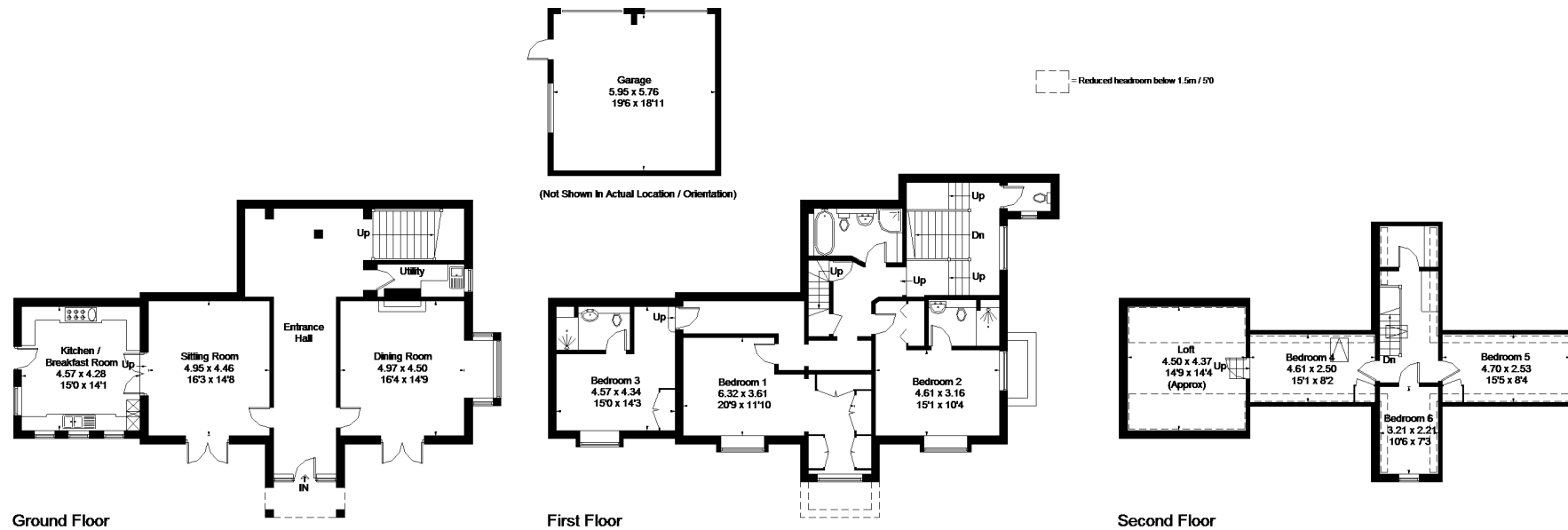
Birchwood Grove Road, Burgess Hill

Approximate Gross Internal Area = 266.5 sq m / 2869 sq ft

Loft = 19.7 sq m / 212 sq ft

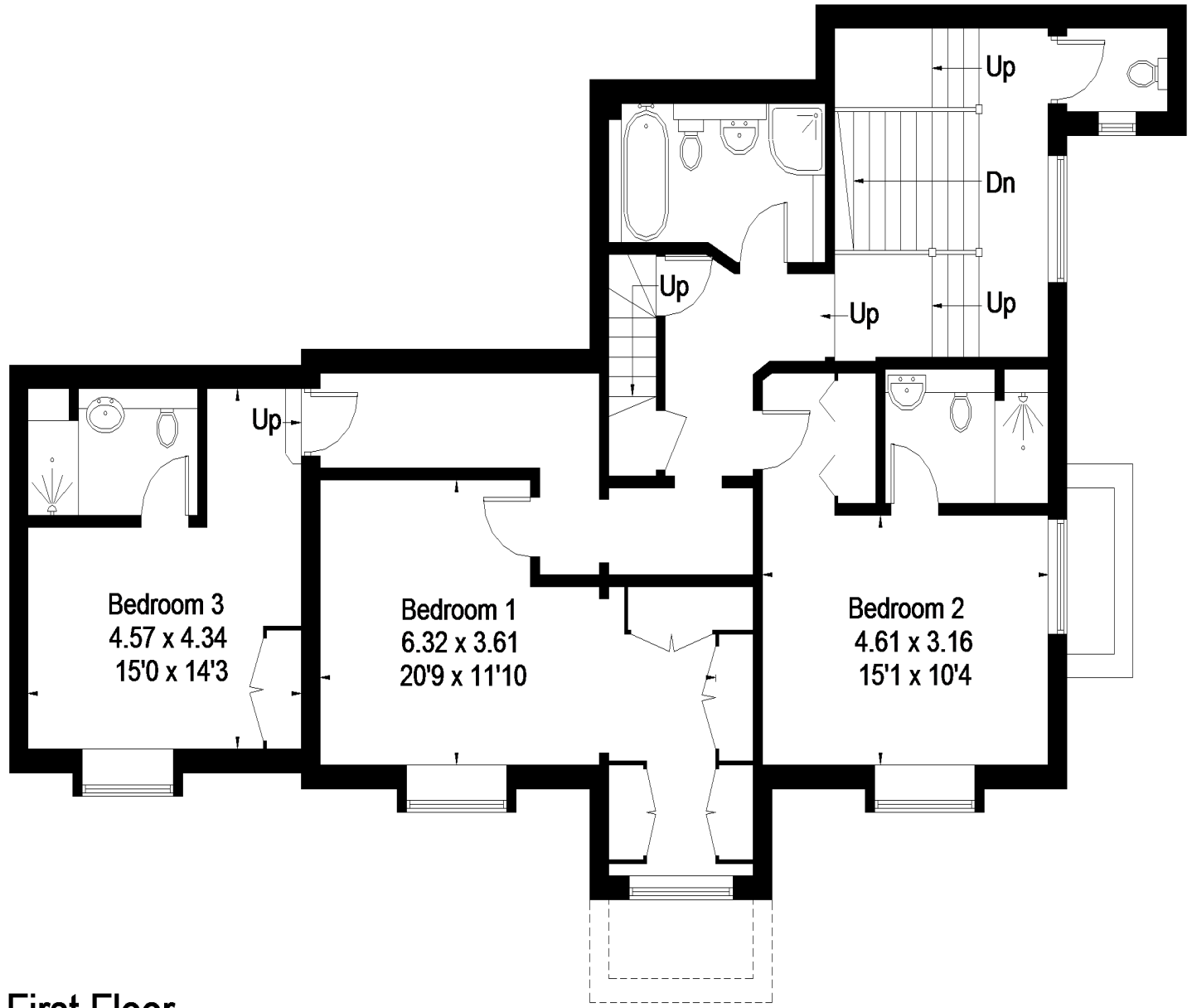
Garage = 34.3 sq m / 369 sq ft

Total = 320.5 sq m / 3450 sq ft

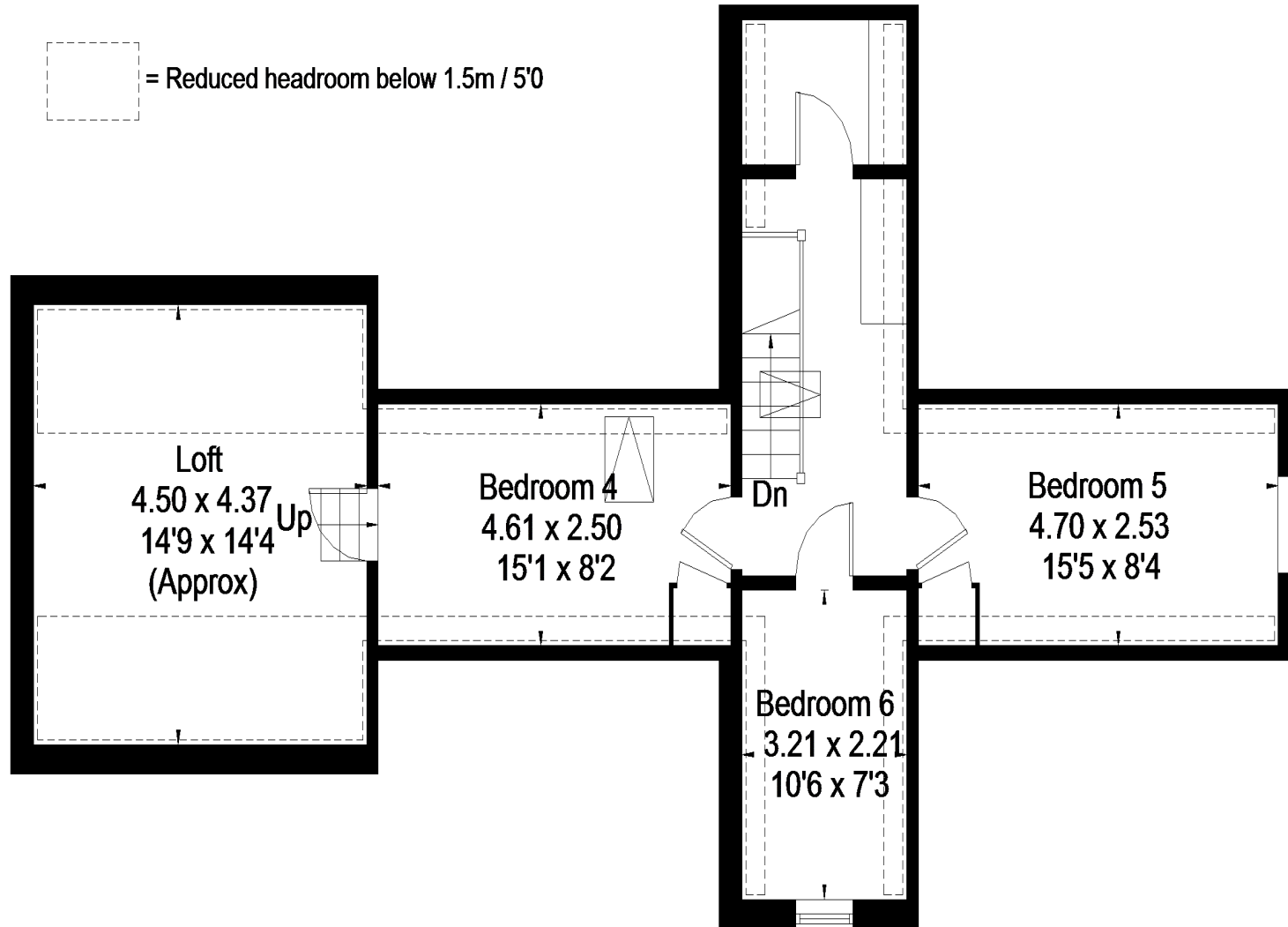


FLOORPLANZ © 2018 0203 9056099 Ref: 222653

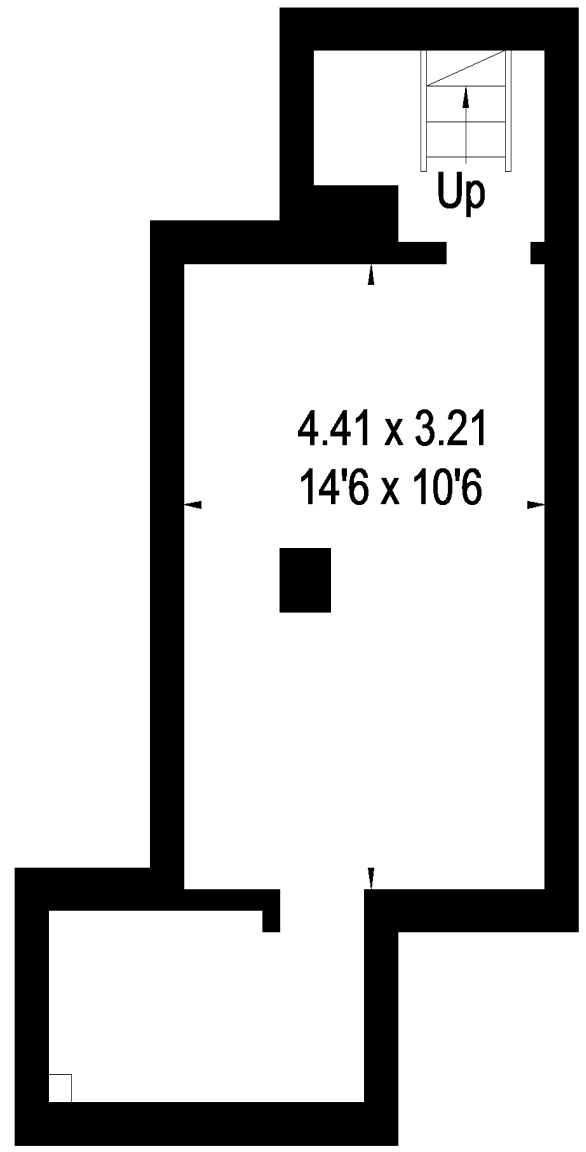
This plan is for layout guidance only. Drawn in accordance with RICS guidelines. Not drawn to scale unless stated. Windows & door openings are approximate. Whilst every care is taken in the preparation of this plan, please check all dimensions, shapes & compass bearings before making any decisions reliant upon them.



First Floor



Second Floor



Cellar

Birchwood Grove Road, Burgess Hill

Approximate Gross Internal Area = 266.5 sq m / 2869 sq ft

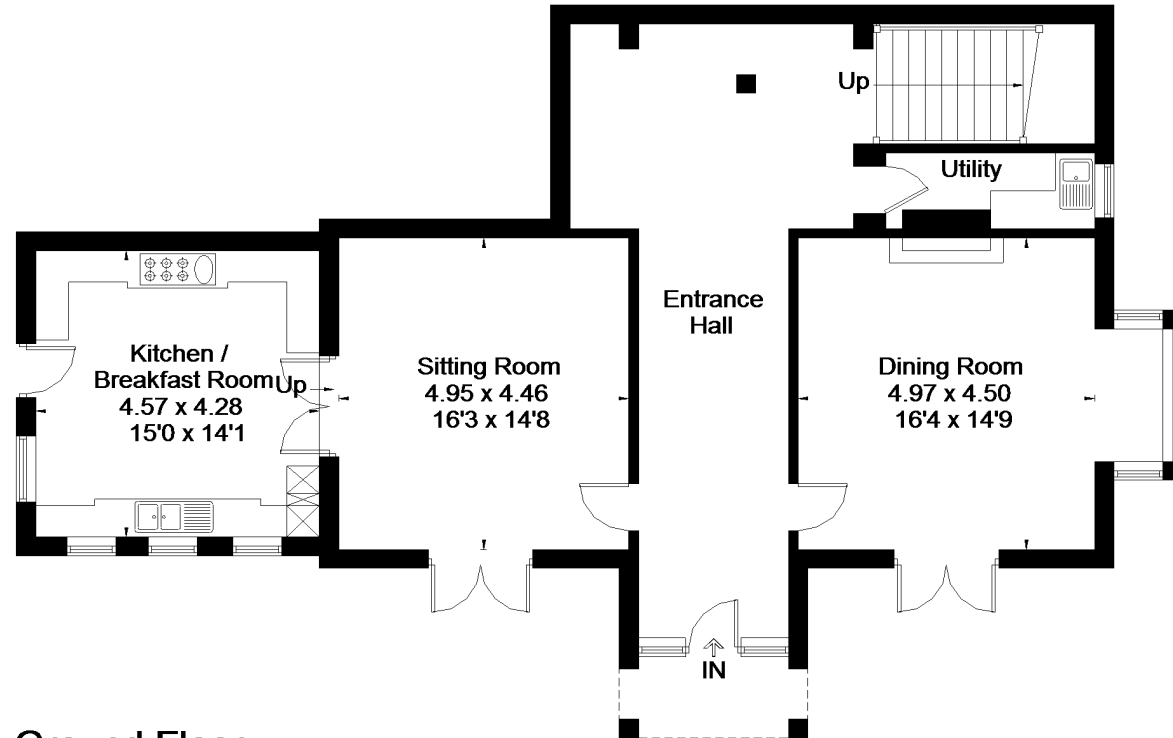
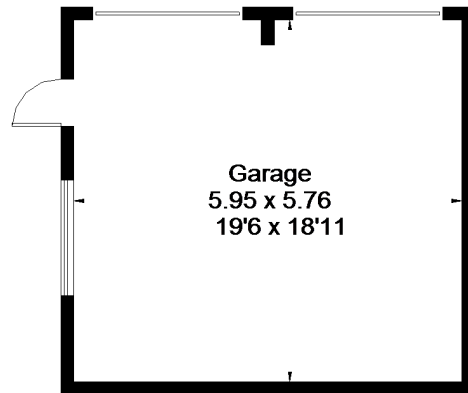
Loft = 19.7 sq m / 212 sq ft

Garage = 34.3 sq m / 369 sq ft

Total = 320.5 sq m / 3450 sq ft



(Not Shown In Actual Location / Orientation)



Ground Floor

FLOORPLANZ © 2018 0203 9056099 Ref: 222653

This plan is for layout guidance only. Drawn in accordance with RICS guidelines. Not drawn to scale unless stated. Windows & door openings are approximate. Whilst every care is taken in the preparation of this plan, please check all dimensions, shapes & compass bearings before making any decisions reliant upon them.