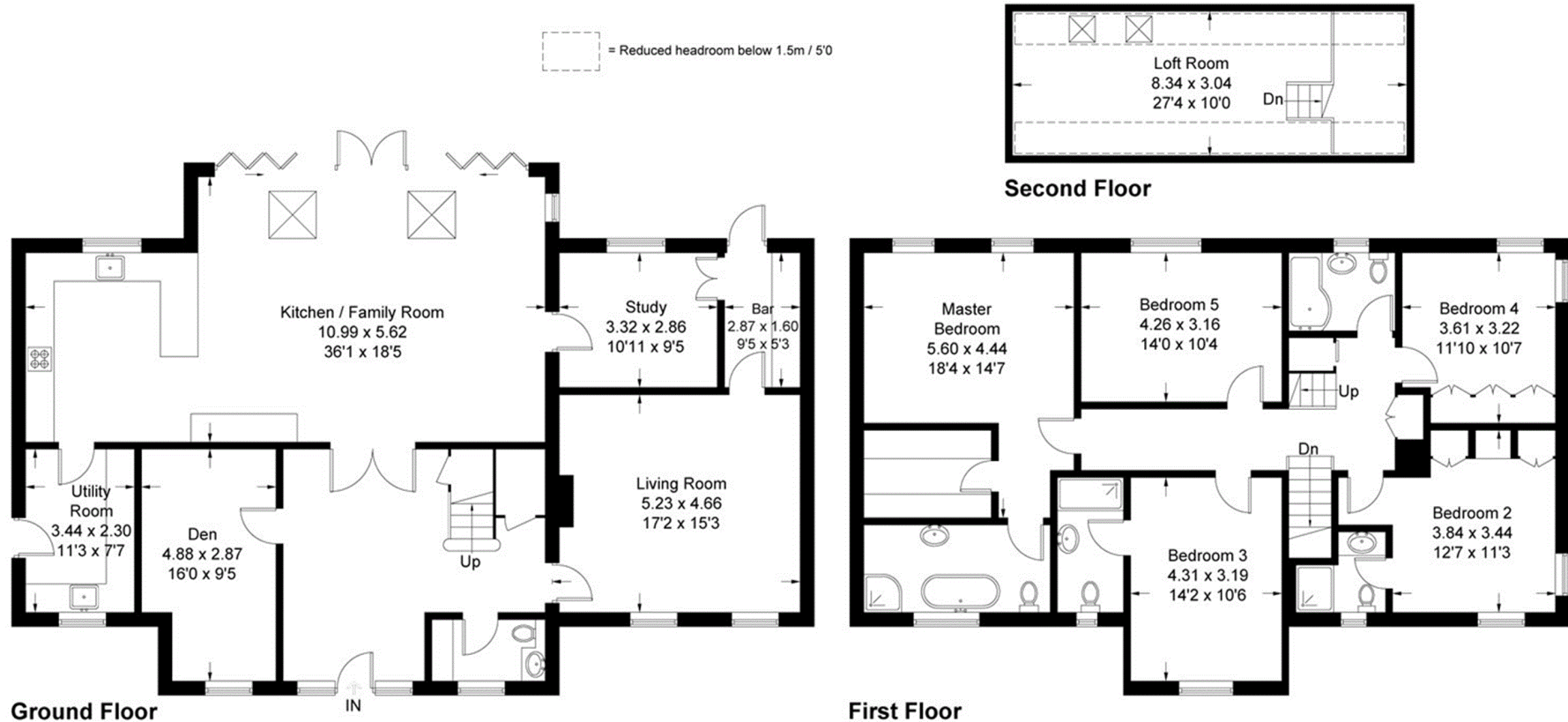


Meadway

Approximate Gross Internal Area = 279.0 sq m / 3003 sq ft
 Reduced Headroom = 11.6 sq m / 125 sq ft
 Total = 290.6 sq m / 3128 sq ft



= Reduced headroom below 1.5m / 5'0



This plan is for layout guidance only. Not drawn to scale unless stated. Windows and door openings are approximate. Whilst every care is taken in the preparation of this plan, please check all dimensions, shapes and compass bearings before making any decisions reliant upon them. (ID554980)