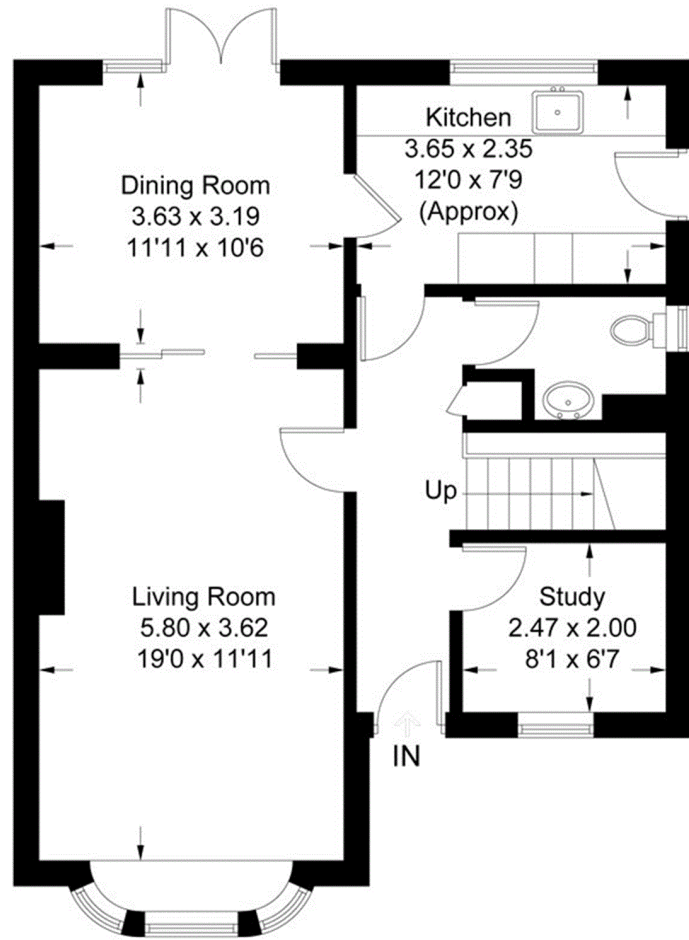
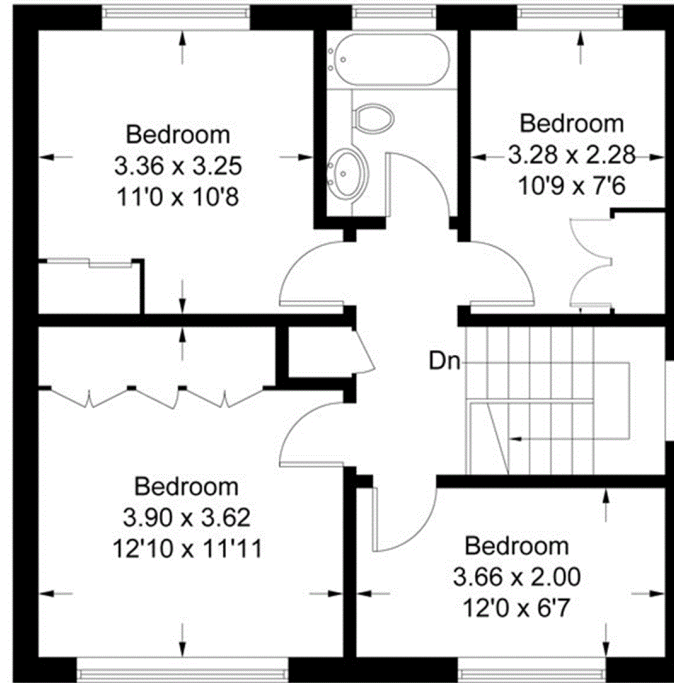


# Eastmoor Park

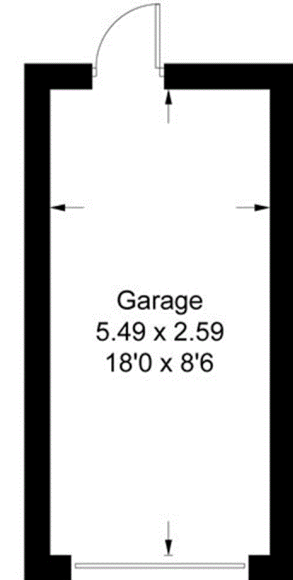
Approximate Gross Internal Area = 116.4 sq m / 1253 sq ft  
Garage = 14.6 sq m / 157 sq ft  
Total = 131.0 sq m / 1410 sq ft



**Ground Floor**



**First Floor**



(Not Shown In Actual Location / Orientation)

This plan is for layout guidance only. Not drawn to scale unless stated. Windows and door openings are approximate. Whilst every care is taken in the preparation of this plan, please check all dimensions, shapes and compass bearings before making any decisions reliant upon them. (ID534536)