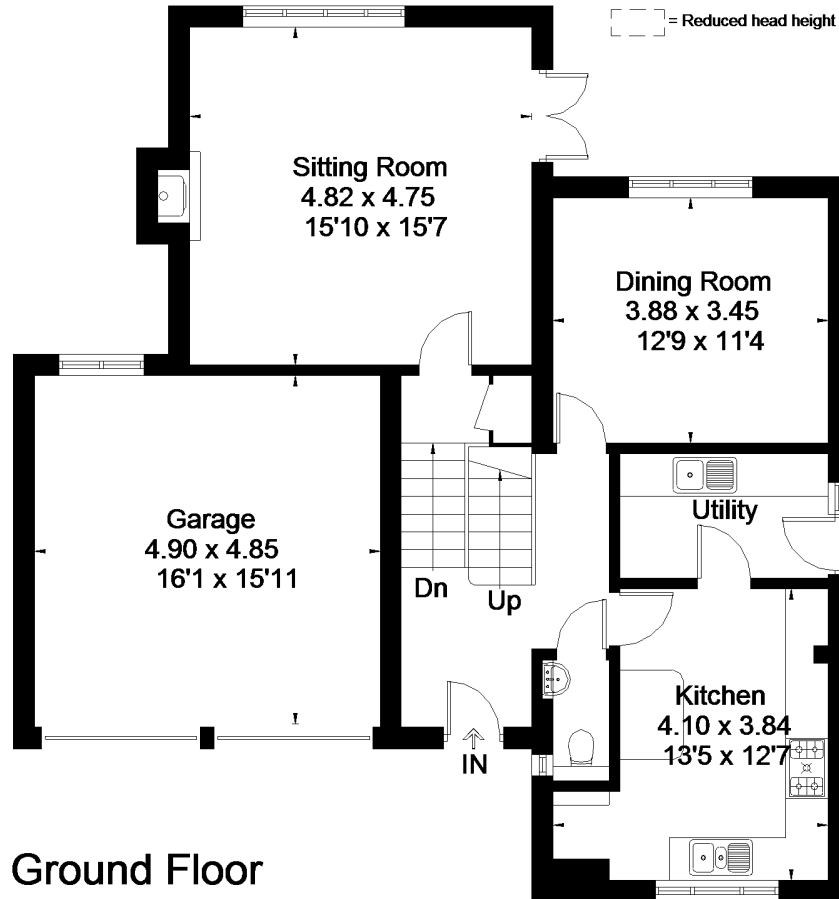
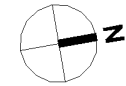
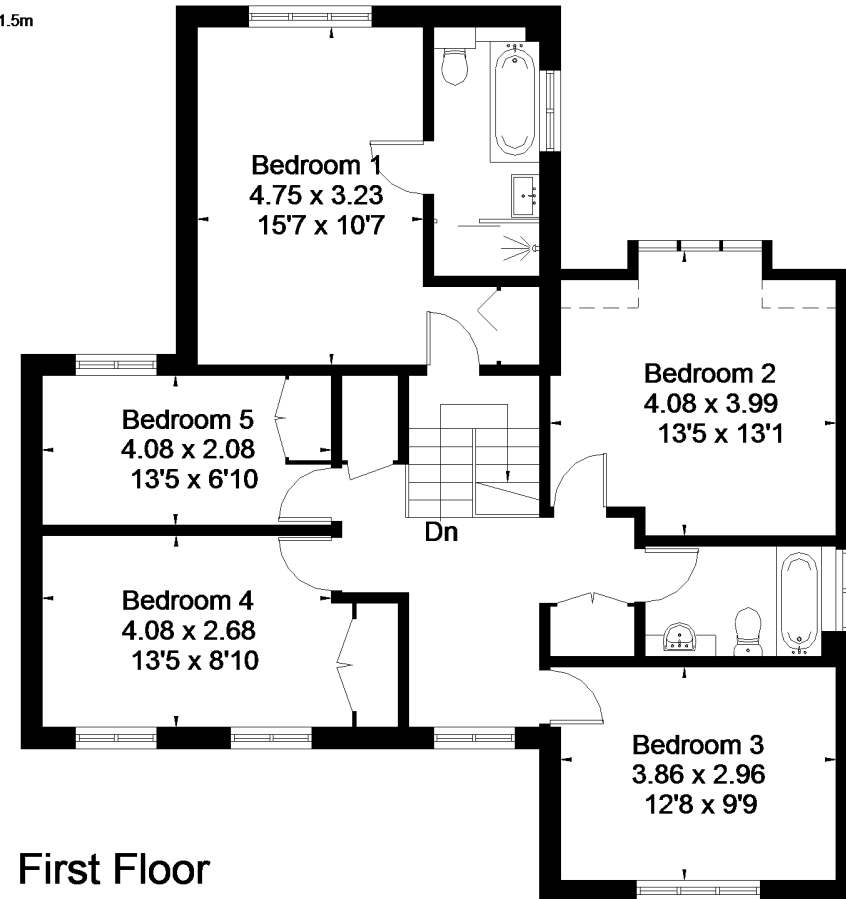


Approximate Floor Area = 167.8 sq m / 1806 sq ft
Garage = 23.8 sq m / 256 sq ft
Total = 191.6 sq m / 2062 sq ft
Including Limited Use Area (1.7 sq m / 19 sq ft)



Ground Floor

Area = 73.6 sq m / 792 sq ft
(Limited Use Area = 0.8 sq m / 9 sq ft)



First Floor

Area = 94.2 sq m / 1014 sq ft
(Limited Use Area = 0.9 sq m / 10 sq ft)