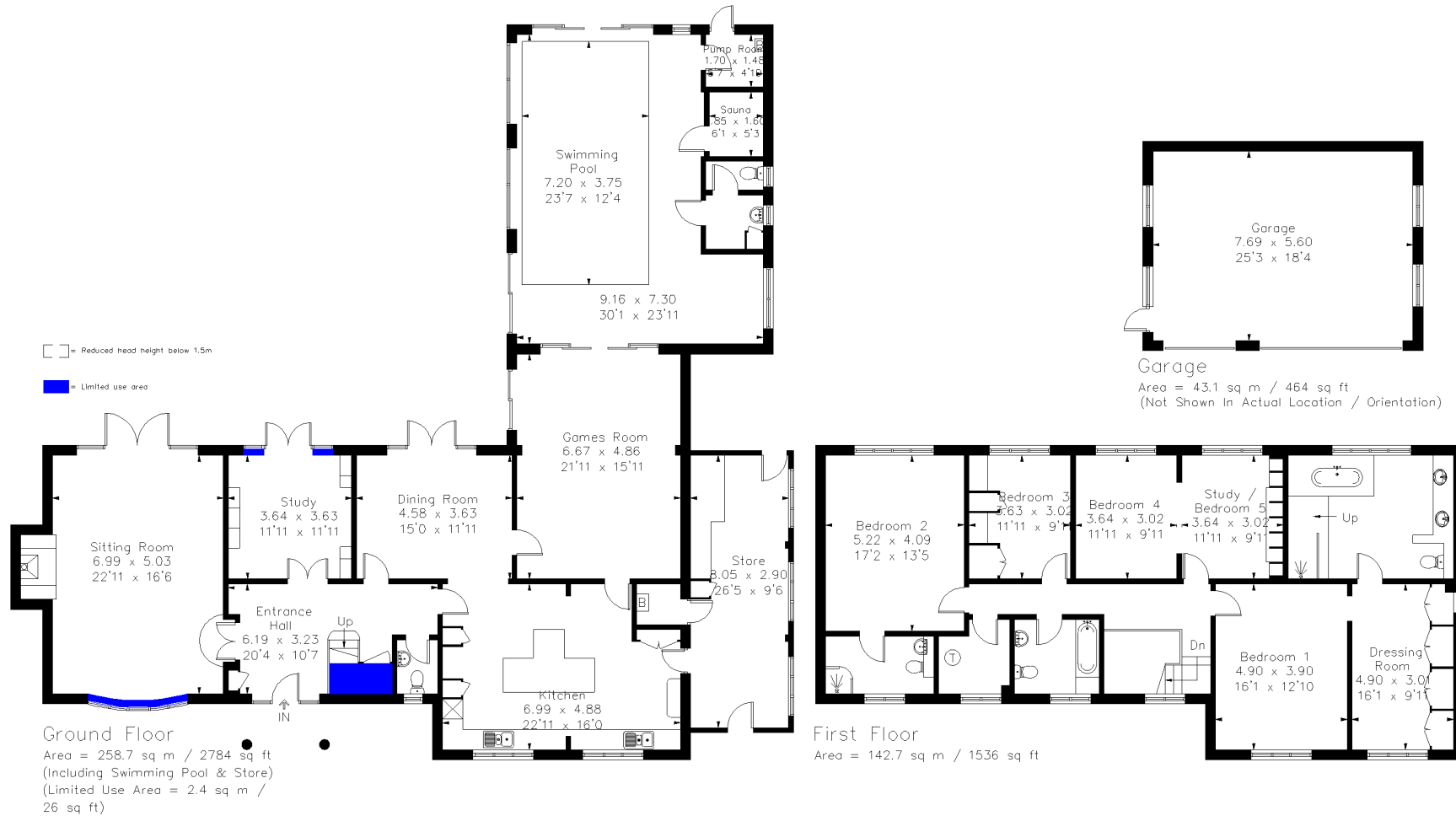
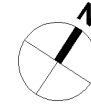


Martinsend Lane, Great Missenden, HP16

Approximate Area = 401.4 sq m / 4320 sq ft (Including Swimming Pool & Store)
 Including Limited Use Area (2.4 sq m / 26 sq ft)
 Garage = 43.1 sq m / 464 sq ft
 Total = 444.5 sq m / 4784 sq ft



Surveyed and drawn in accordance with the International Property Measurement Standards (IPMS 2: Residential)
 fourwalls-group.com 229451