
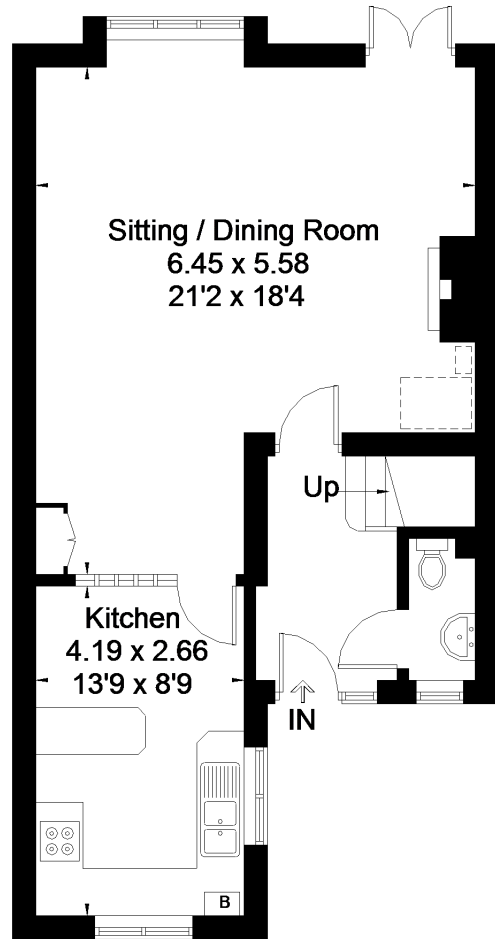


High Street, Great Missenden

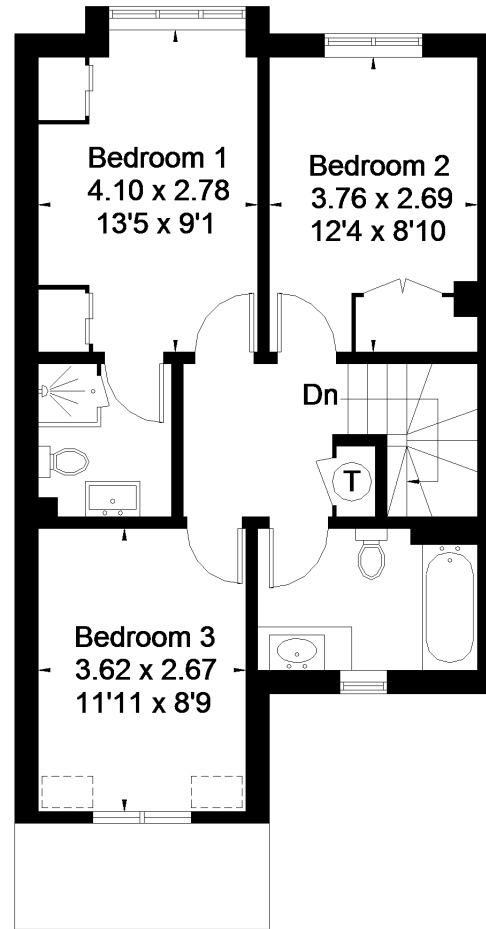
Approximate Gross Internal Area = 101.4 sq m / 1091 sq ft
Garage = 13.5 sq m / 145 sq ft
Total = 114.9 sq m / 1236 sq ft



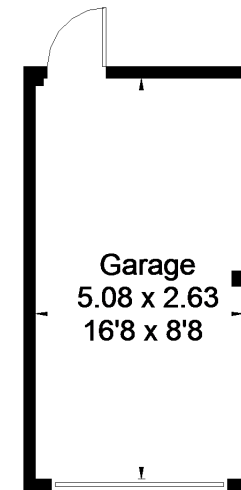
 = Reduced headroom below 1.5m / 5'0



Ground Floor



First Floor



(Not Shown In Actual Location / Orientation)

Floorplanz © 2018
0203 9056099 Ref: 212521
This plan is for layout guidance only.
Drawn in accordance with RICS guidelines. Not drawn to scale, unless stated. Windows & door openings are approximate. Whilst every care is taken in the preparation of this plan, please check all dimensions, shapes & compass bearings before making any decisions reliant upon them.