

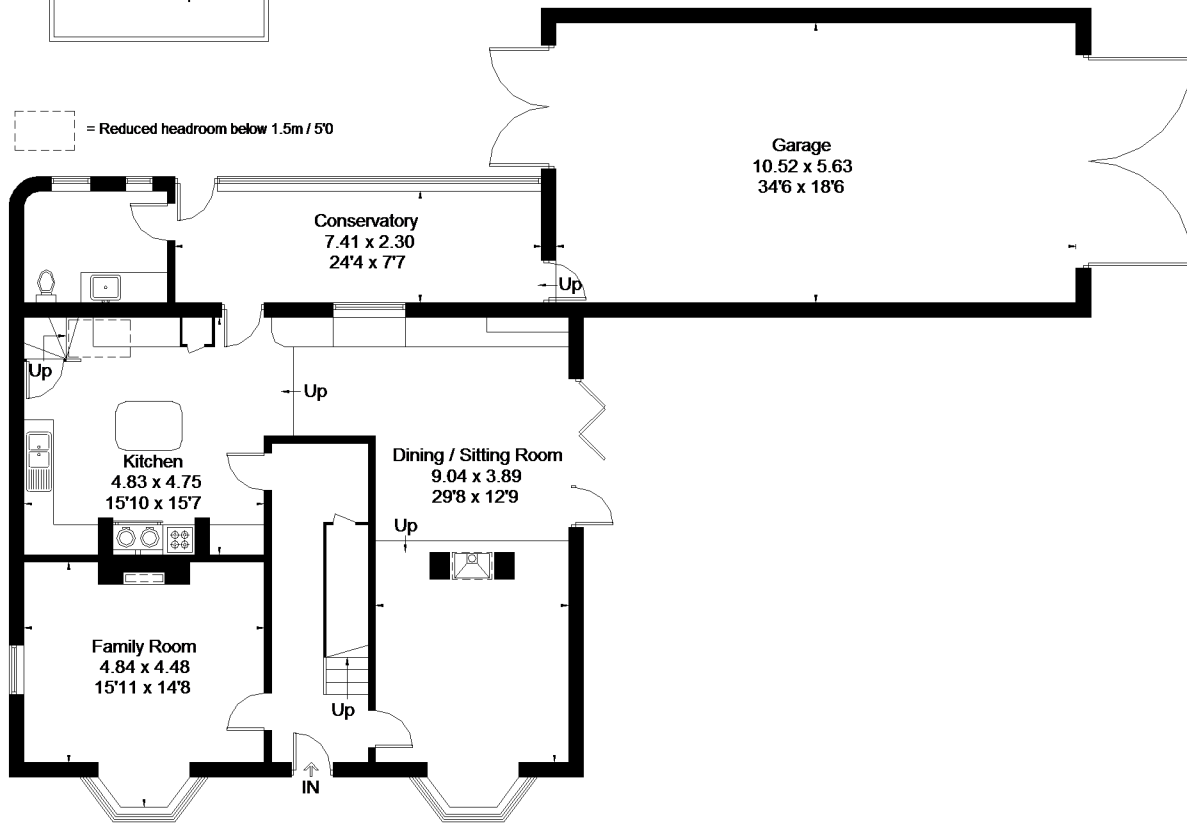
# Grove Lane, Great Kimble, Aylesbury

Approximate Gross Internal Area  
 347.4 sq m / 3739 sq ft  
 (Including Garage)

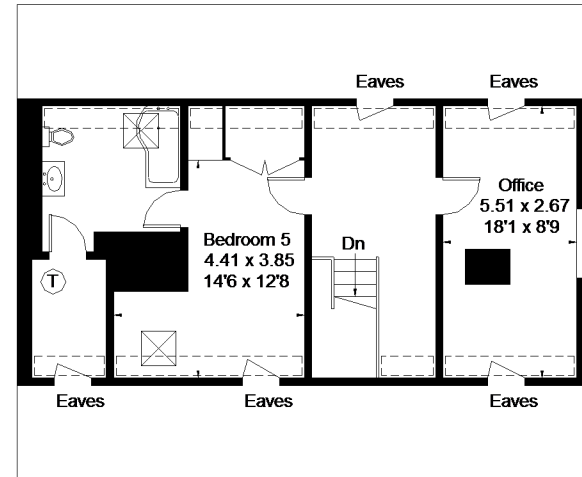


Floorplan © 2018  
 0203 9056099 Ref: 208319  
 This plan is for layout guidance only.  
 Drawn in accordance with  
 RICS guidelines. Not drawn to  
 scale, unless stated. Windows &  
 door openings are approximate.  
 Whilst every care is taken in the  
 preparation of this plan, please check  
 all dimensions, shapes & compass  
 bearings before making any  
 decisions reliant upon them.

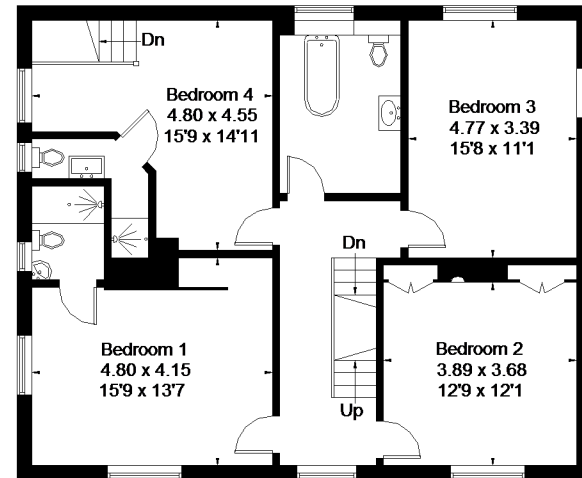
= Reduced headroom below 1.5m / 5'0"



Ground Floor



Second Floor



First Floor