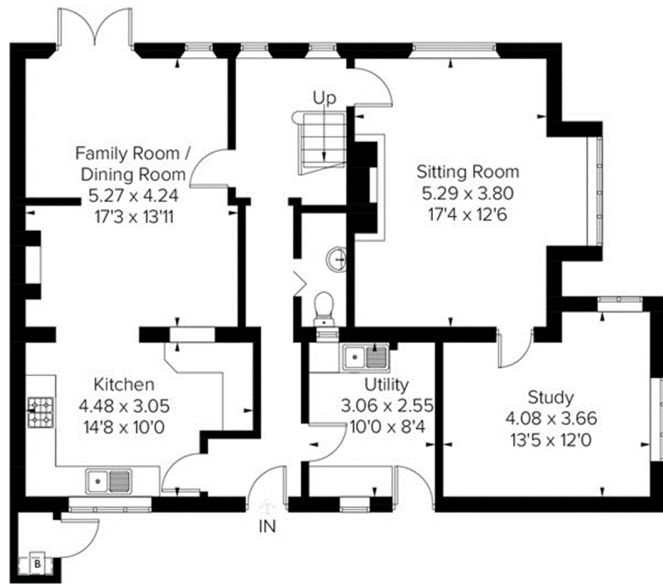


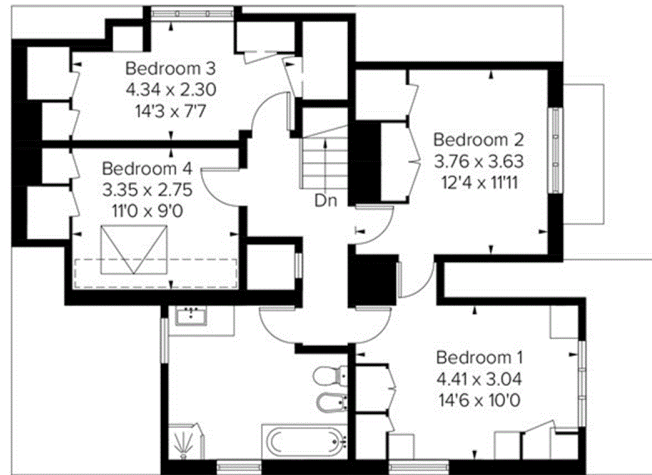
Approximate Area = 174.4 sq m / 1877 sq ft  
Garage = 33.9 sq m / 365 sq ft  
Including Limited Use Area (7.6 sq m / 82 sq ft)  
Total = 208.3 sq m / 2242 sq ft

= Reduced head height below 1.5m



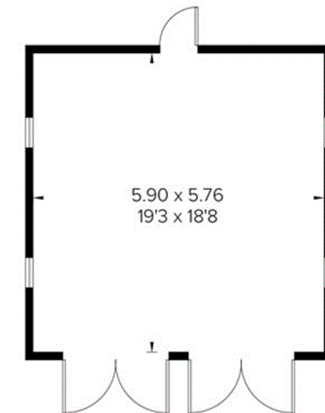
Ground Floor

Area = 100.5 sq m / 1082 sq ft  
(Limited Use Area = 2.4 sq m / 26 sq ft)



First Floor

Area = 73.9 sq m / 795 sq ft  
(Limited Use Area = 5.2 sq m / 56 sq ft)



Garage

Area = 33.9 sq m / 365 sq ft