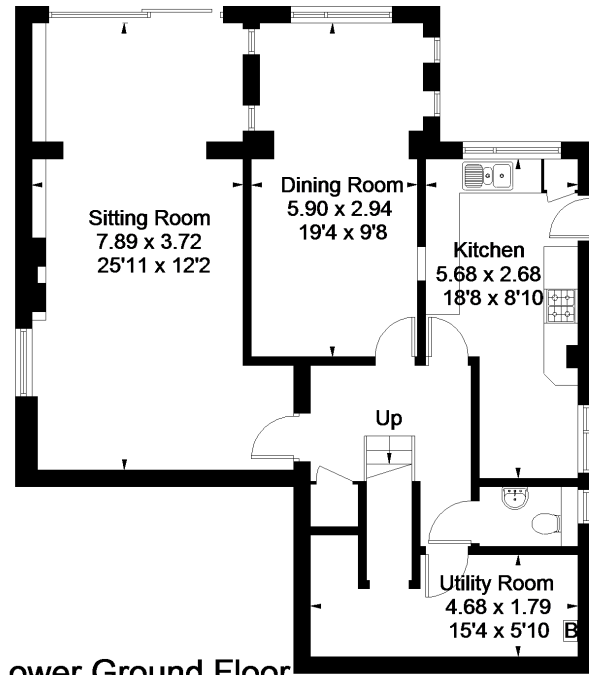
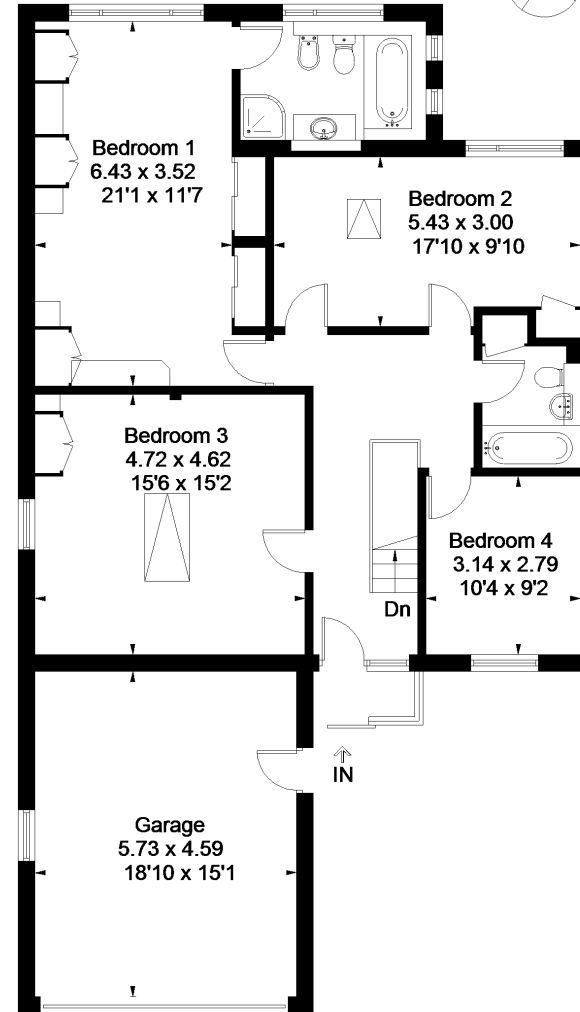


Approximate Floor Area = 189.7 sq m / 2042 sq ft  
Garage = 26.7 sq m / 287 sq ft  
Total = 216.4 sq m / 2329 sq ft



**Lower Ground Floor**  
Area = 85.7 sq m / 922 sq ft



**Ground Floor**  
Area = 104.0 sq m / 1119 sq ft  
Garage = 26.7 sq m / 287 sq ft