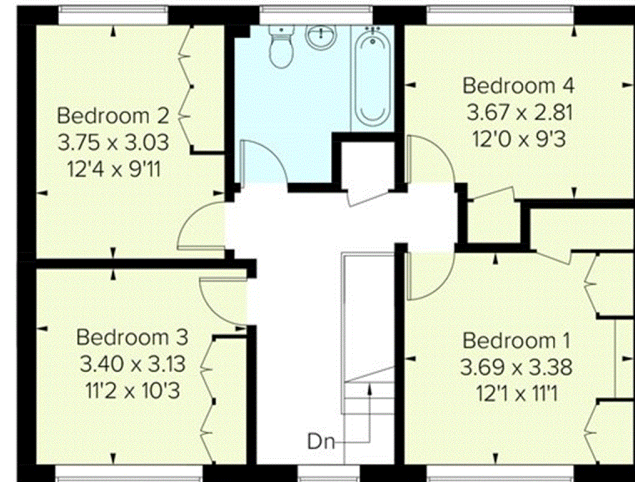
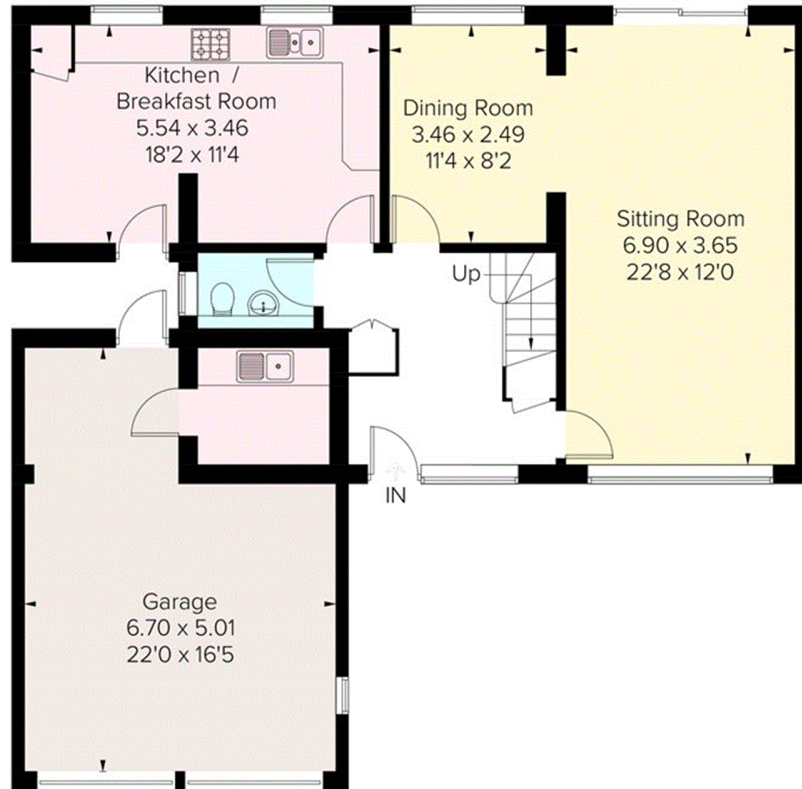


Approximate Floor Area = 136.9 sq m / 1473 sq ft
Including Limited Use Area (1.0 sq m / 11 sq ft)
Garage = 32.9 sq m / 354 sq ft
Total = 169.8 sq m / 1827 sq ft



= Reduced head height below 1.5m



First Floor
Area = 66.0 sq m / 710 sq ft

Ground Floor
Area = 70.9 sq m / 763 sq ft
(Limited Use Area = 1.0 sq m / 11 sq ft)
Garage = 32.9 sq m / 354 sq ft