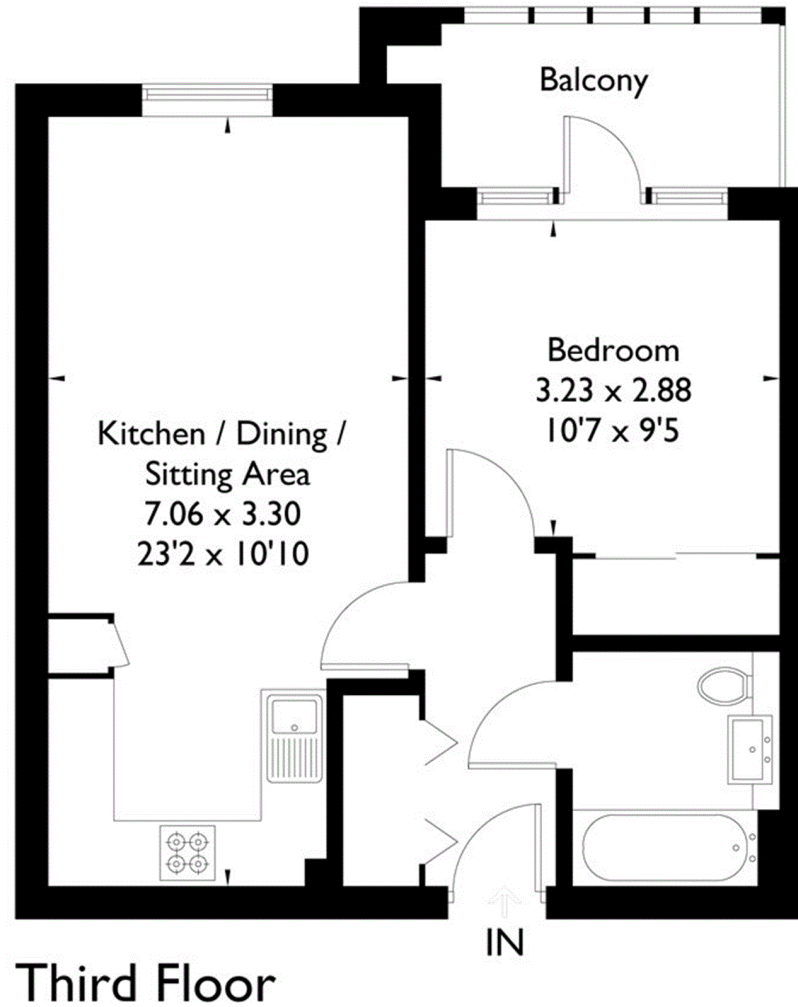


Flambard Way, Godalming

Approximate Gross Internal Area = 44.4 sq m / 478 sq ft



Third Floor

FLOORPLANZ © 2017 0203 9056099 Ref: 197609

This plan is for layout guidance only. Drawn in accordance with RICS guidelines. Not drawn to scale unless stated. Windows & door openings are approximate. Whilst every care is taken in the preparation of this plan, please check all dimensions, shapes & compass bearings before making any decisions reliant upon them.