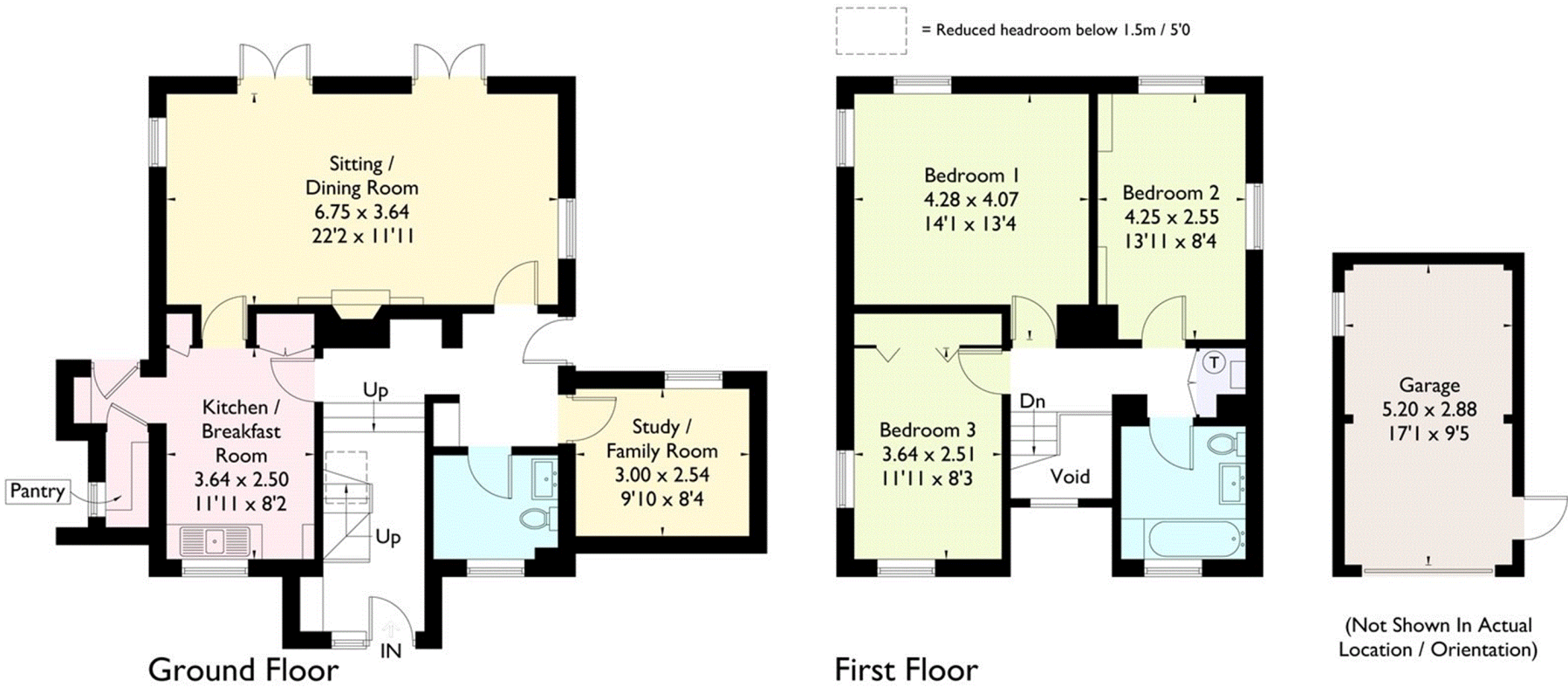


Knoll Wood, Godalming

Approximate Gross Internal Area = 119.7 sq m / 1288 sq ft
(Excluding Void)
Garage = 15.1 sq m / 162 sq ft
Total = 134.8 sq m / 1451 sq ft



FLOORPLANZ © 2018 0203 9056099 Ref: 220250

This plan is for layout guidance only. Drawn in accordance with RICS guidelines. Not drawn to scale unless stated. Windows & door openings are approximate. Whilst every care is taken in the preparation of this plan, please check all dimensions, shapes & compass bearings before making any decisions reliant upon them.