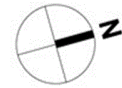
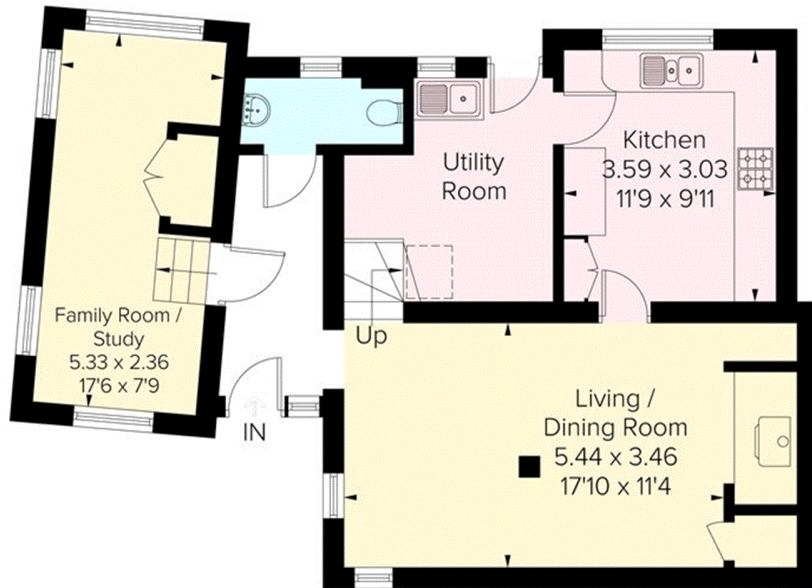


Approximate Area = 113.2 sq m / 1218 sq ft
 Including Limited Use Area (0.6 sq m / 6 sq ft)
 Outbuilding = 20.3 sq m / 218 sq ft
 Total = 133.5 sq m / 1437 sq ft

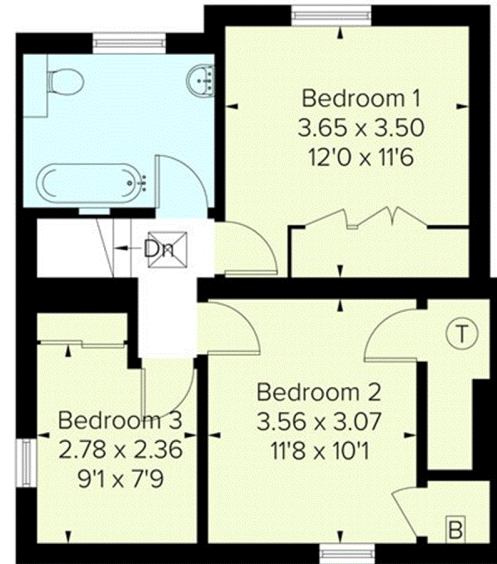


= Reduced head height below 1.5m



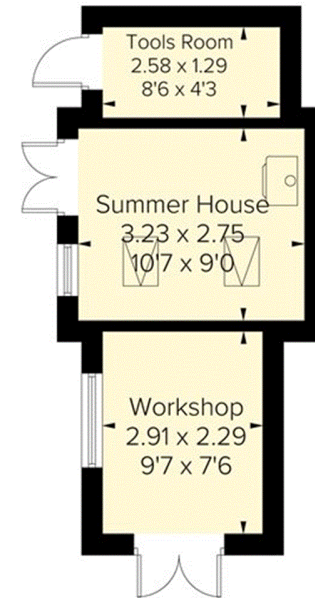
Ground Floor

Area = 66.9 sq m / 720 sq ft
 (Limited Use Area = 0.6 sq m / 6 sq ft)



First Floor

Area = 46.3 sq m / 498sq ft



Outbuilding

Area = 20.3 sq m / 218 sq ft