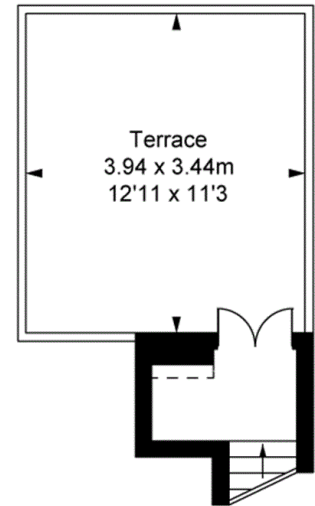


Lettice Street, SW6

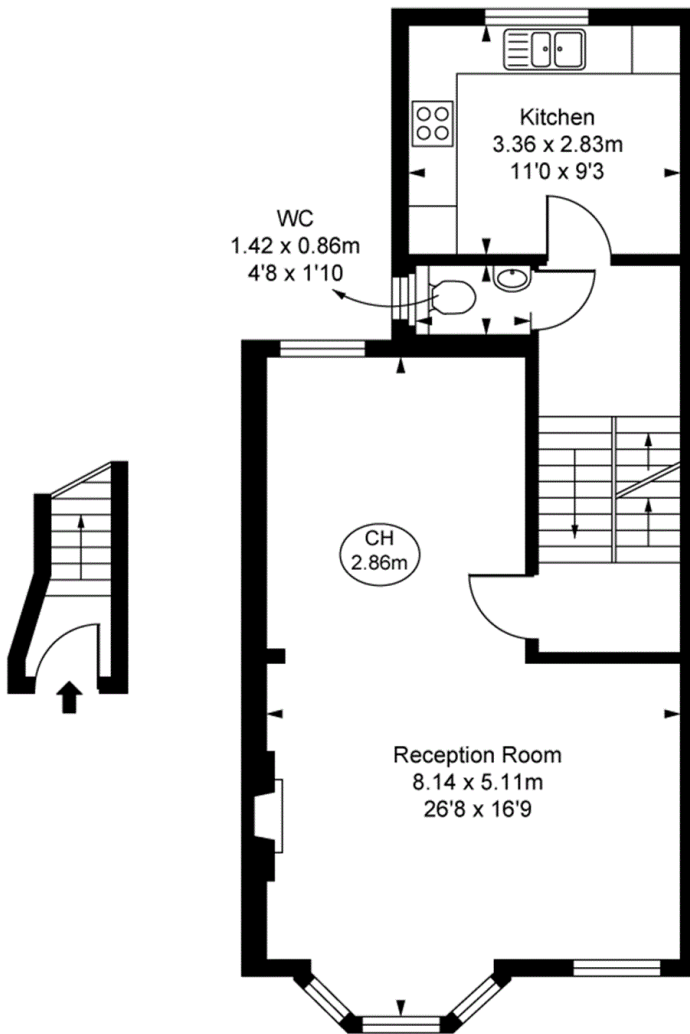
Approximate Gross Internal Area
 105.38 sq m / 1,134 sq ft
 Eaves Storage
 5.01 sq m / 54 sq ft
Total Areas Including Eaves
110.39 sq m / 1,188 sq ft



(Including restricted height
 under 1.5m [- - - -])
 (CH = Ceiling Heights)

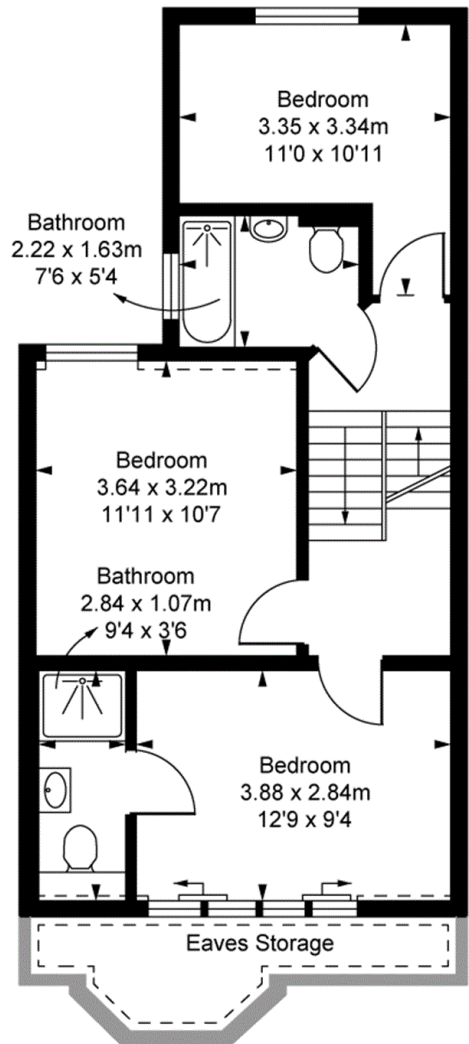


Third Floor
 Approximate Gross Internal Area
 2.38 sq m / 26 sq ft



Ground Floor Entrance
 Approximate Gross Internal Area
 2.07 sq m / 22 sq ft

First Floor
 Approximate Gross Internal Area
 52.93 sq m / 570 sq ft



Second Floor
 Approximate Gross Internal Area
 48.00 sq m / 517 sq ft