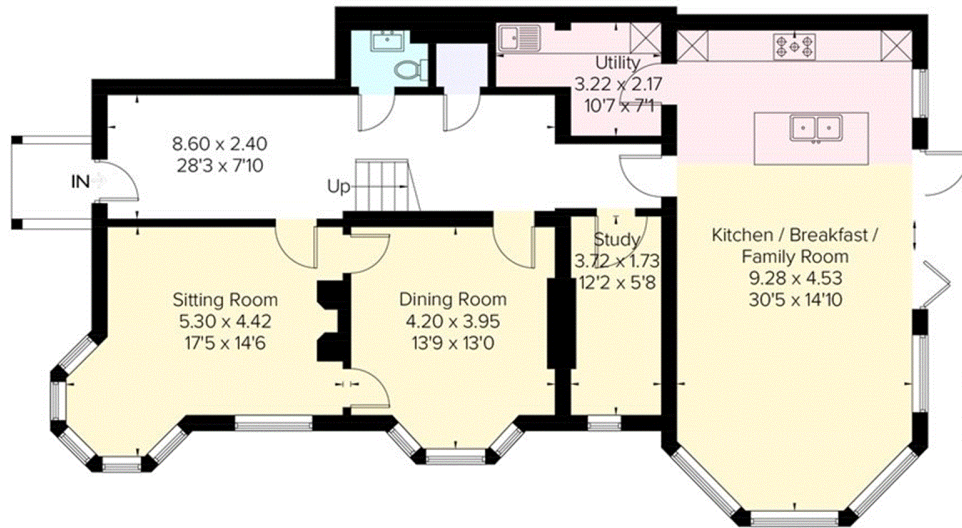
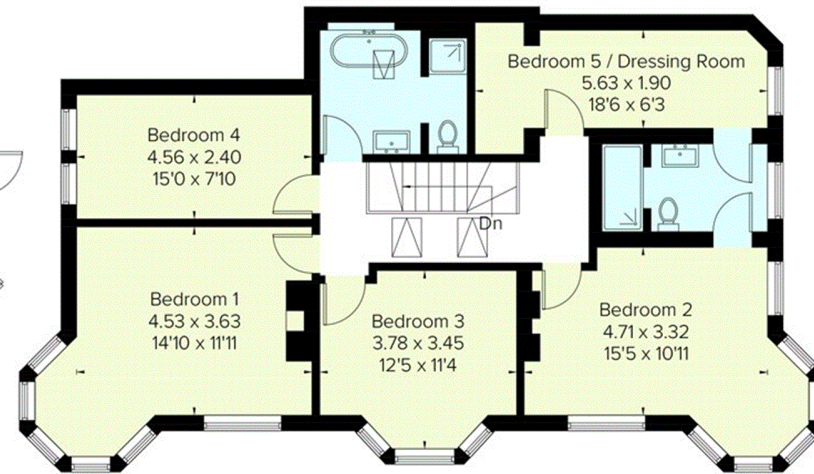


# Little Austins Road, Farnham

Approximate Gross Internal Area = 221.3 sq m / 2382 sq ft



Ground Floor



First Floor

FLOORPLANZ © 2018 0203 9056099 Ref: 220784

This plan is for layout guidance only. Drawn in accordance with RICS guidelines. Not drawn to scale unless stated. Windows & door openings are approximate. Whilst every care is taken in the preparation of this plan, please check all dimensions, shapes & compass bearings before making any decisions reliant upon them.