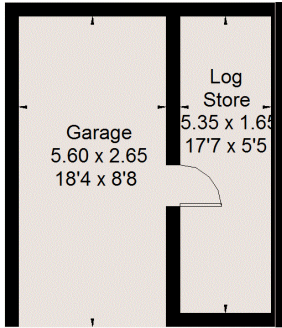


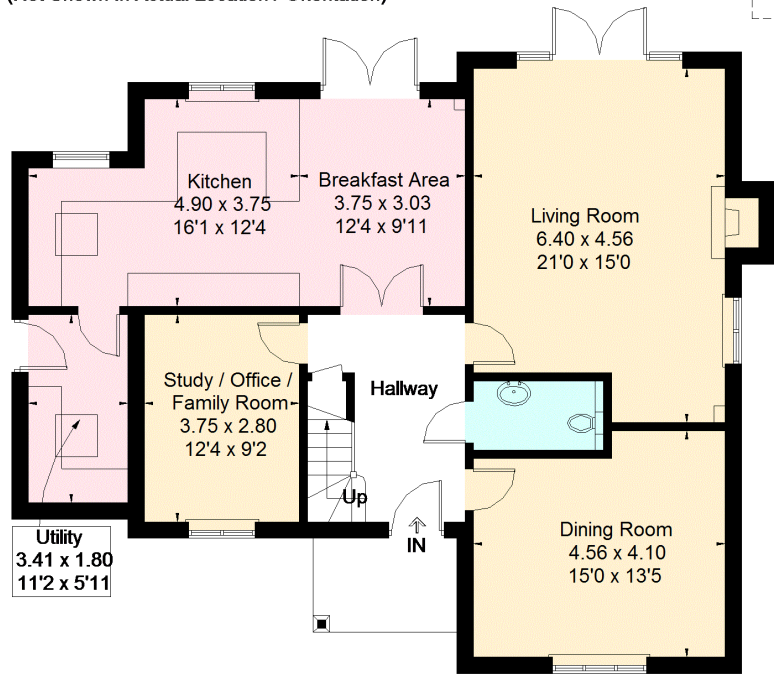
## 2 Fincham View, Rye Common, RG29 1HU

Approximate Gross Internal Area  
 House= 203.5 sq m / 2190 sq ft  
 Garage & Log store = 25.2 sq m / 271 sq ft  
 Total = 228.7 sq m / 2461 sq ft

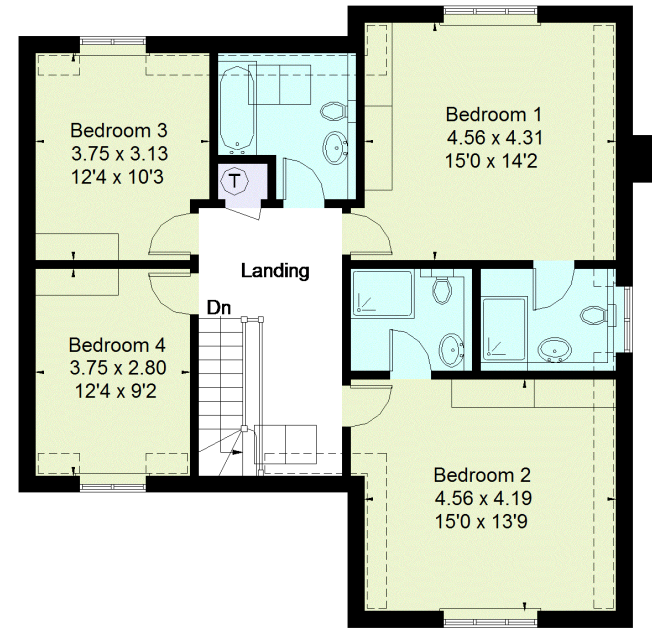


(Not Shown In Actual Location / Orientation)

= Reduced headroom below 1.5m / 5'0



Ground Floor



First Floor

FLOORPLANZ © 2017 0203 9056099 Ref: 201391

This plan is for layout guidance only. Drawn in accordance with RICS guidelines. Not drawn to scale unless stated. Windows & door openings are approximate. Whilst every care is taken in the preparation of this plan, please check all dimensions, shapes & compass bearings before making any decisions reliant upon them.