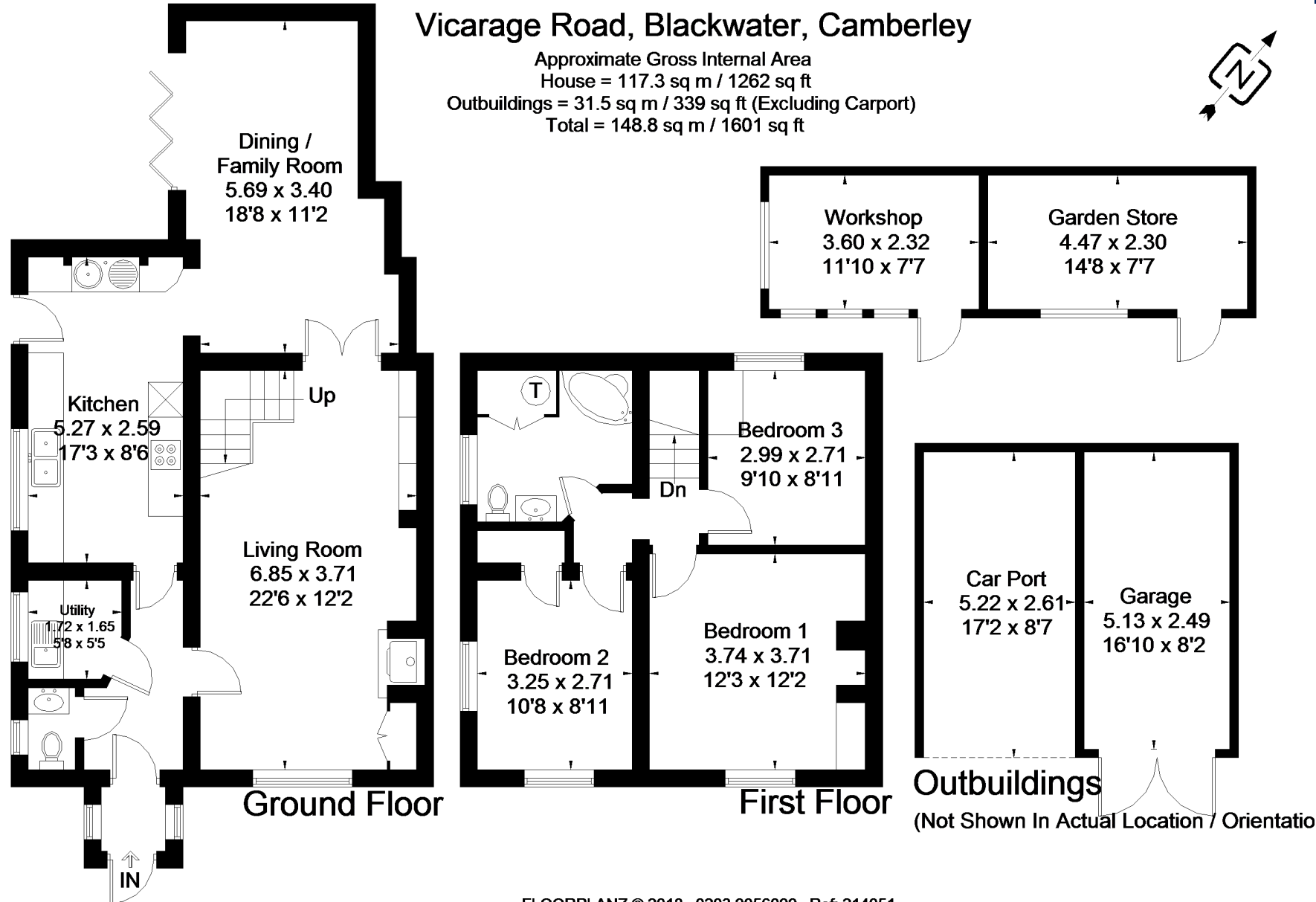


Vicarage Road, Blackwater, Camberley

Approximate Gross Internal Area
House = 117.3 sq m / 1262 sq ft
Outbuildings = 31.5 sq m / 339 sq ft (Excluding Carport)
Total = 148.8 sq m / 1601 sq ft



FLOORPLANZ © 2018 0203 9056099 Ref: 214051

This plan is for layout guidance only. Drawn in accordance with RICS guidelines. Not drawn to scale unless stated. Windows & door openings are approximate. Whilst every care is taken in the preparation of this plan, please check all dimensions, shapes & compass bearings before making any decisions reliant upon them.