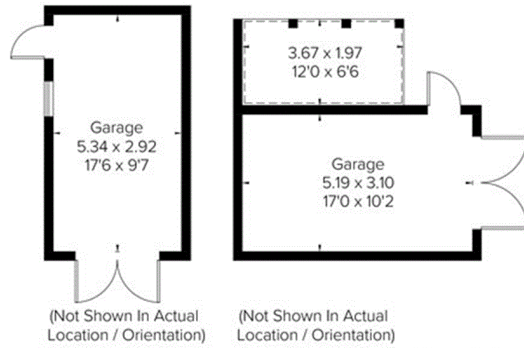
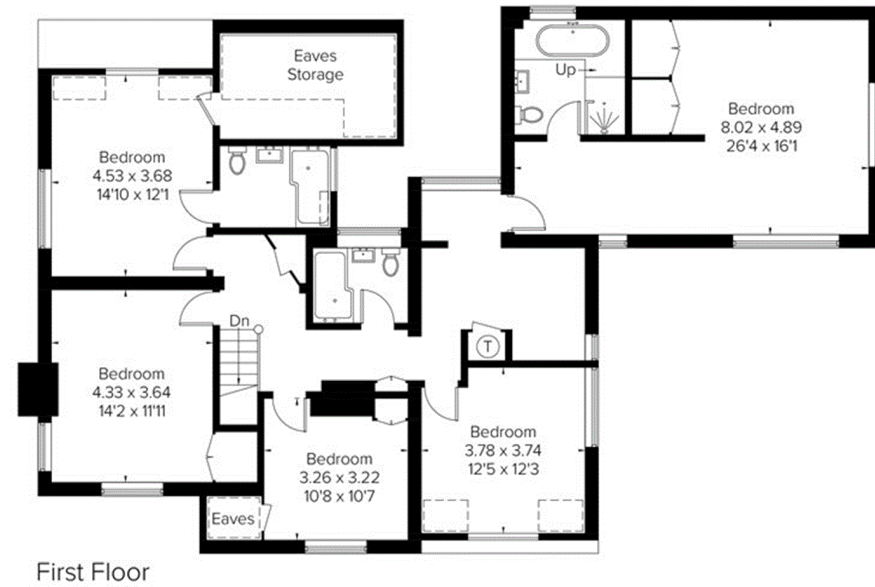
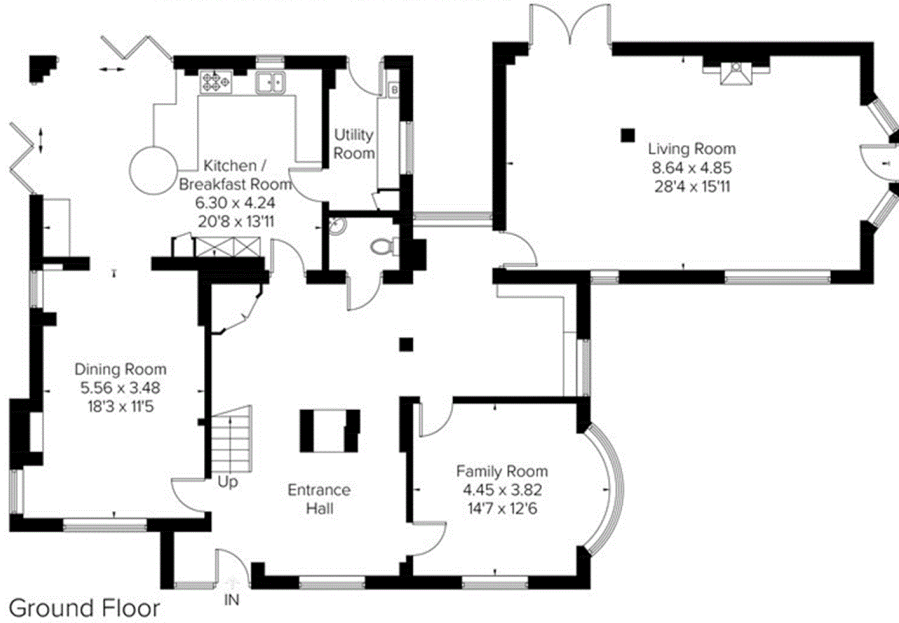


Approximate Gross Internal Area = 309.3 sq m / 3329 sq ft
 (Excluding Void / Including Eaves Storage)
 Garages = 31.6 sq m / 340 sq ft
 Total = 340.9 sq m / 3669 sq ft



= Reduced headroom below 1.5m / 5'0"



FLOORPLANZ © 2019 0203 9056099 Ref: 224984

This plan is for layout guidance only. Drawn in accordance with RICS guidelines. Not drawn to scale unless stated. Windows & door openings are approximate. Whilst every care is taken in the preparation of this plan, please check all dimensions, shapes & compass bearings before making any decisions reliant upon them.