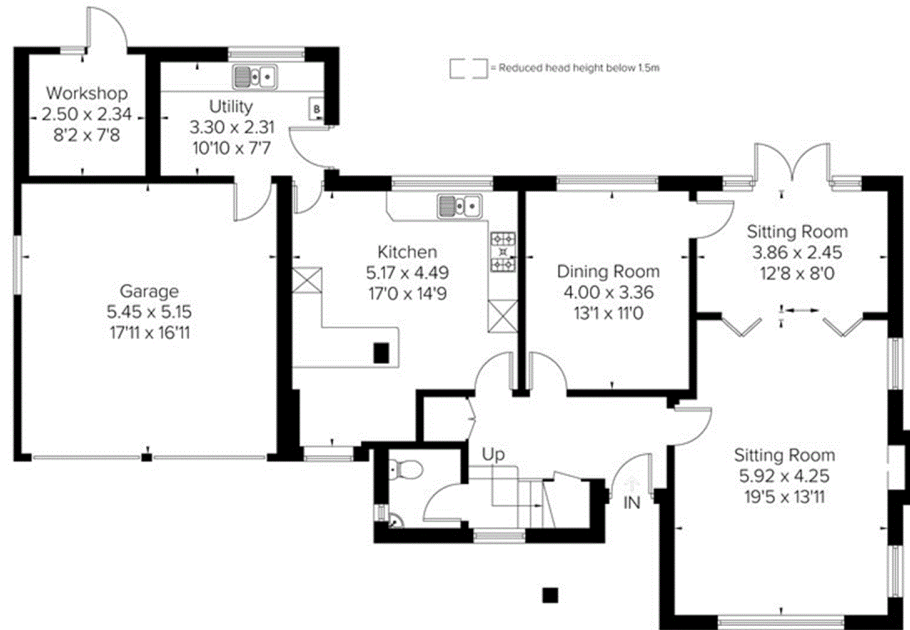
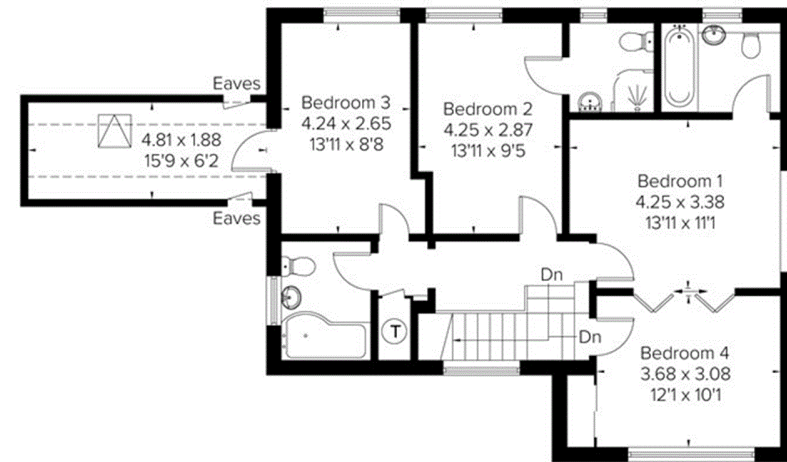




Approximate Area = 211.5 sq m / 2277 sq ft
(Including Garage)
Workshop = 5.8 sq m / 62 sq ft
Total = 217.3 sq m / 2339 sq ft
Including Limited Use Area (7.1 sq m / 76 sq ft)



Ground Floor
Area = 124.0 sq m / 1335 sq ft
(Limited Use Area = 1.3 sq m / 14 sq ft)



First Floor
Area = 87.5 sq m / 942 sq ft
(Limited Use Area = 5.8 sq m / 62 sq ft)