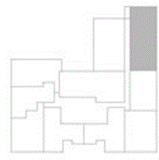


NOTE:  
The Gross Internal Area (GIA) noted is approximate and calculated according to the RICS Code of Measuring Practice, 6<sup>th</sup> edition, May 2015. (Internal partitions, columns, piers and service voids are included in the GIA.)



**FLAT 37 SECOND FLOOR**

82 sqm / 882 sq ft GIA