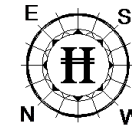
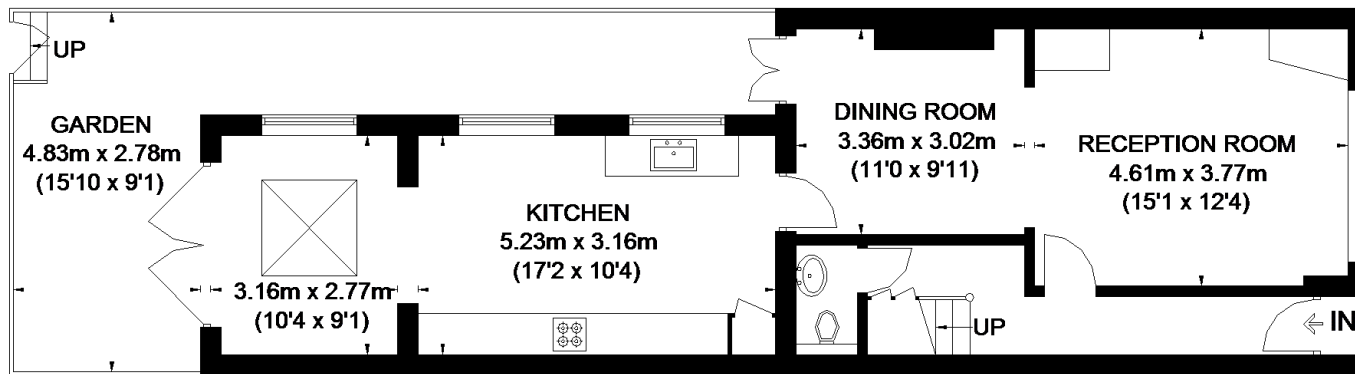
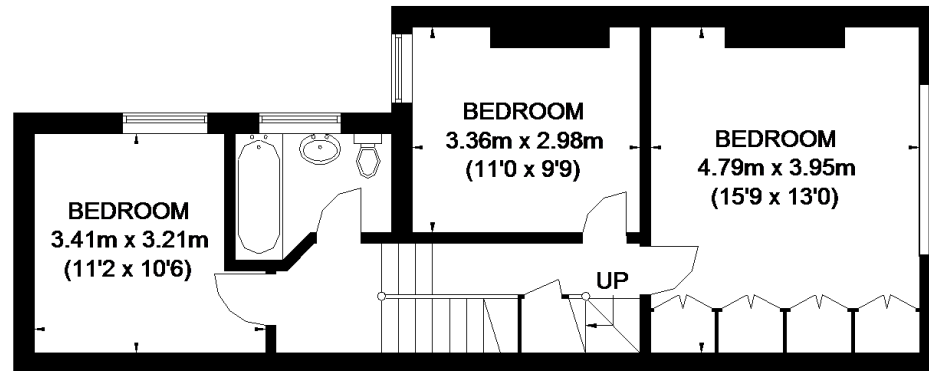
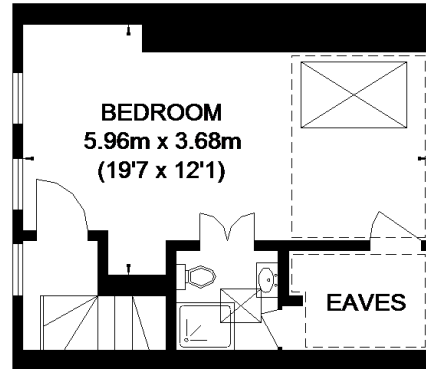


GALESBURY ROAD



APPROXIMATE GROSS INTERNAL AREA
(EXCLUDING REDUCED HEADROOM / EAVES)
 GROUND FLOOR = 705 SQ. FT. (65.5 SQ. M.)
 FIRST FLOOR = 572 SQ. FT. (53.1 SQ. M.)
 SECOND FLOOR = 203 SQ. FT. (18.9 SQ. M.)
 REDUCED HEADROOM / EAVES
 100 SQ. FT. (9.3 SQ. M.)
 TOTAL = 1580 SQ. FT. (146.8 SQ. M.)



= SKYLIGHT / ROOF WINDOW



= REDUCED HEADROOM BELOW 1.5M / 5'0

This plan is for layout guidance only. Not drawn to scale unless stated. Windows and door openings are approximate. Whilst every care is taken in the preparation of this plan, please check all dimensions, shapes and compass bearings before making any decisions reliant upon them. Please be advised that Hamptons International / our agents have not seen or reviewed any building regulations or planning permission in relation to works carried out to the property (ID477418)