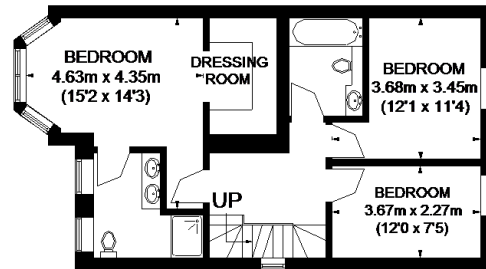
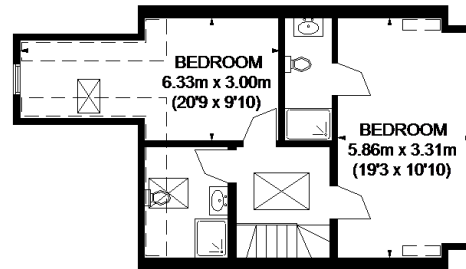


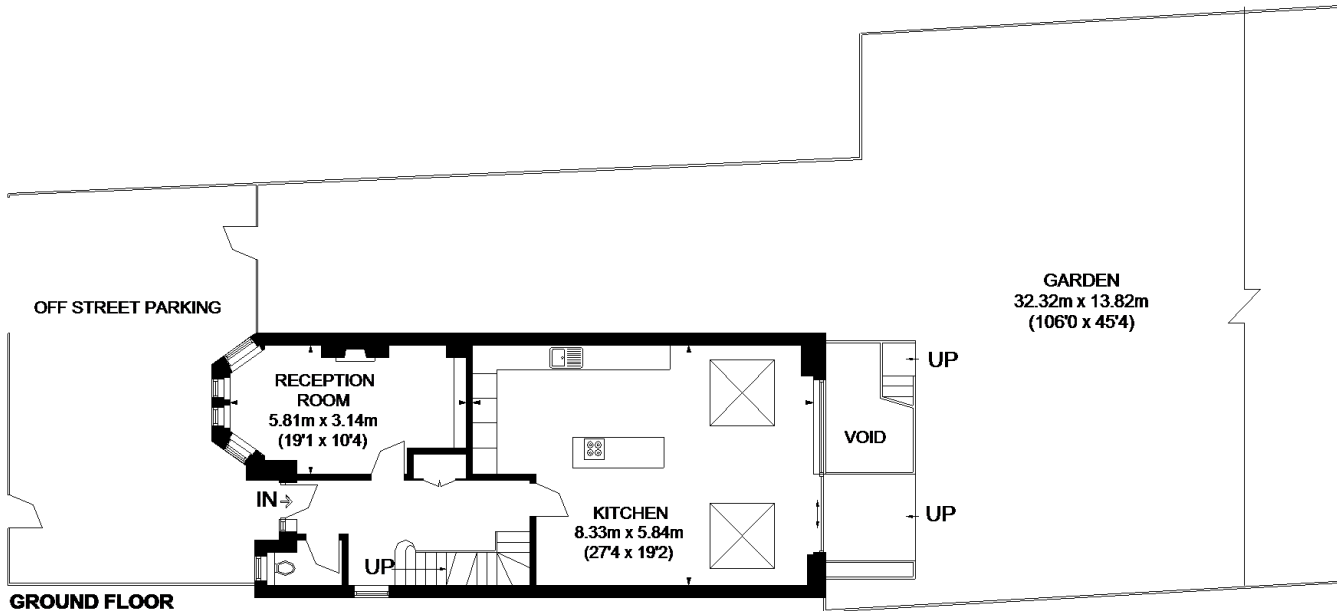
ASCOTT AVENUE



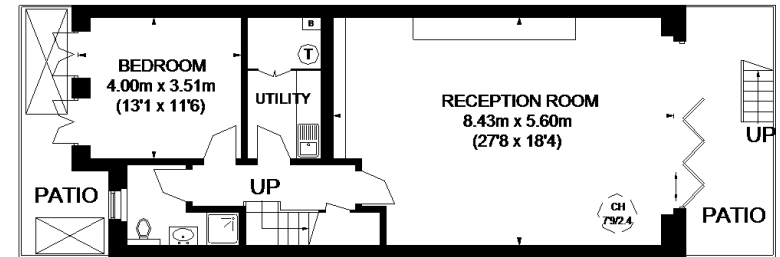
FIRST FLOOR



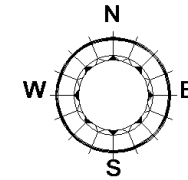
SECOND FLOOR



GROUND FLOOR

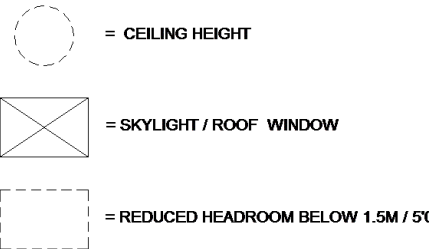


LOWER GROUND FLOOR



APPROXIMATE GROSS INTERNAL AREA
(EXCLUDING REDUCED HEADROOM)

- LOWER GROUND FLOOR
846 SQ. FT. (78.6 SQ. M.)
- GROUND FLOOR = 842 SQ. FT. (78.2 SQ. M.)
- FIRST FLOOR = 638 SQ. FT. (59.3 SQ. M.)
- SECOND FLOOR = 484 SQ. FT. (45.0 SQ. M.)
- REDUCED HEADROOM = 77 SQ. FT. (7.1 SQ. M.)
- TOTAL = 2887 SQ. FT. (268.2 SQ. M.)



This plan has been drawn from supplied plans, strictly for use as a guide only.

This plan is for layout guidance only. Not drawn to scale unless stated. Windows and door openings are approximate. Whilst every care is taken in the preparation of this plan, please check all dimensions, shapes and compass bearings before making any decisions reliant upon them. Please be advised that Countrywide / our agents have not seen or reviewed any building regulations or planning permission in relation to works carried out to the property (ID561595)