

Mill Lane, Newdigate, RH5

Approximate Area = 101.9 sq m / 1097 sq ft

Boiler Room & Pantry = 1.8 sq m / 19 sq ft

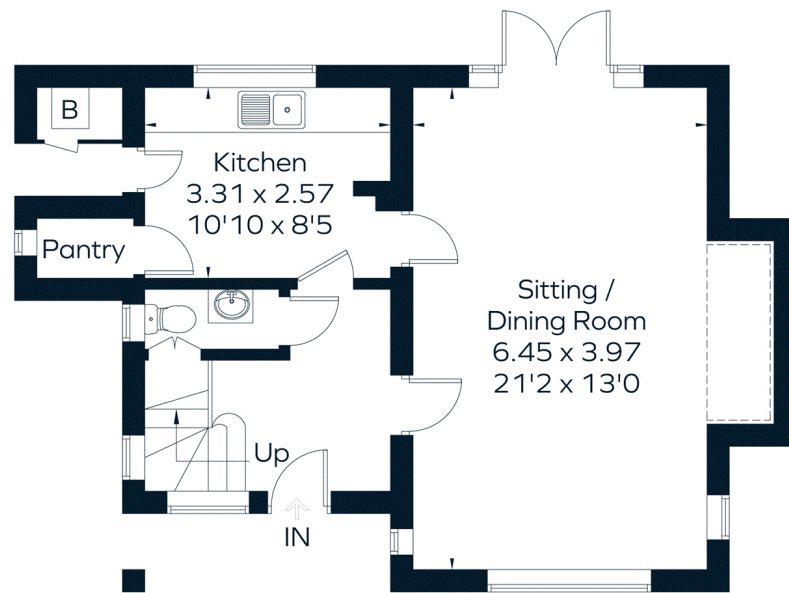
Outbuildings = 11.2 sq m / 120 sq ft

Total = 114.9 sq m / 1236 sq ft

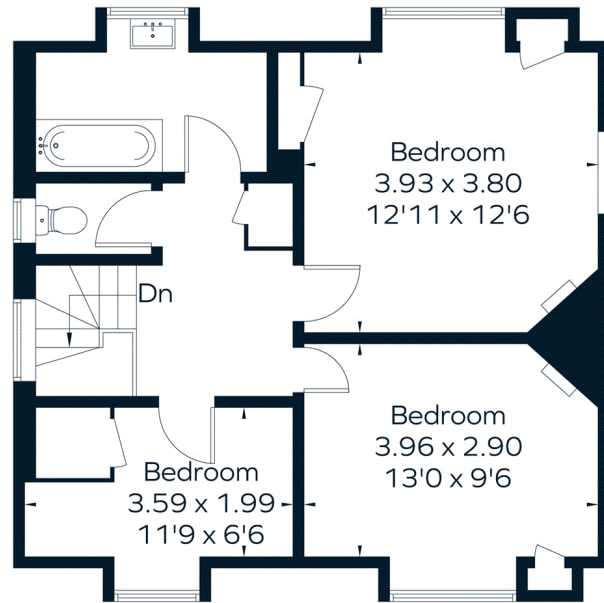
Including Limited Use Area (2.4 sq m / 26 sq ft)



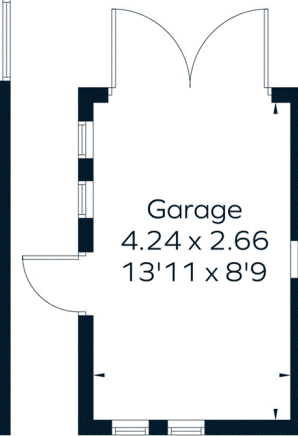
= Reduced head height below 1.5m



Ground Floor



First Floor



(Not Shown In Actual Location / Orientation)